

GOVERNMENT CORNER RESTORATION FORM

Township 275 Range 1W Sec. 9 County DOUGLAS

State OREGON Date 3/22/88 No. _____

Corner Designation

1/4 S9
S16

- _____ Condition Report Only
- _____ Not Found
- Renewed
- _____ Unrecorded
- _____ Surveyed In
- _____ Referenced Out

Previous Renewals #112, 186

Monument(s) Found: (Condition and Source)

A 2 INCH DIAMETER BRASS CAP (MARKED AS AT RIGHT) ON A 1 3/8 INCH OD. IRON PIPE PROTRUDING APPROXIMATELY 13 INCHES ABOVE GROUND

A POSSIBLE ORIGINAL CORNER STONE MEASURING APPROXIMATELY 20x15x5 INCHES WITH NO MARKS VISIBLE IS FOUND LOOSELY SET ON SURFACE OF GROUND APPROXIMATELY 1 FOOT SOUTH OF B.C. MONUMENT.

MONUMENT DETAIL

COUNTY SURVEYORS OFFICE

T275 R1W

1/4 S9
S16

1969

Accessories Found:

ACCESSORIES MEASURED FROM FOUND B.C.

ONE ORIGINAL BEARING TREE FOUND A FIR, 14 INS. DIAM. NOW A 32 INCH D.B.H. DOUGLAS FIR WITH A PARTIALLY OPENED BLAZE REVEALS THE SCRIBING "4" BEARS N 60° E, 30 1/2 FEET DISTANT (AS PER RECORD). ORIGINAL MAPLE BEARING TREE REMOVED BY ROAD WORK.

BEARING TREE FROM RENEWAL #112 FOUND; A 10" D. FIR NOW A 13 INCH D.B.H. DOUGLAS FIR WITH A FULLY HEALED DOUBLE BLAZE BEARS S 11 1/2° E 17 3/4 FEET DISTANT (RECORD FROM RENEWAL #112 S 09° E, 17 1/2 FT.)

BEARING OBJECTS FROM RENEWAL #186 FOUND AS FOLLOWS.

A PK NAIL 3.5 FEET ABOVE GROUND IN A 2 1/2" DIAM. D. FIR NOW A 26 INCH D.B.H. DOUGLAS FIR, BLAZED BUT NOT SCRIBED BEARS N 06 3/4° W, 89 3/4 FEET DISTANT (RECORD N 05° W, 89 3/4 FT.). A 5/8" x 30" I. ROD WITH ALUM. CAP STAMPED "B02" NOW A 5/8 INCH DIAMETER IRON ROD WITH AN ALUMINUM CAP STAMPED "B02" PROTRUDING 2 INCHES ABOVE GROUND BEARS N 06 3/4° W, 63 3/4 FEET DISTANT (RECORD N 05° W, 63 3/4 FT.).

A PK NAIL 2 3/4 FEET ABOVE GROUND IN A 1 1/2" DIAM. CHINQUAPIN NOW A 15 INCH D.B.H. CHINQUAPIN BLAZED BUT NOT SCRIBED BEARS S 89 1/2° W, 74 1/2 FEET DISTANT (AS PER RECORD). AND A 5/8" x 30" I. ROD WITH ALUM. CAP STAMPED "B01" NOW A 5/8 INCH DIAMETER IRON ROD WITH AN ALUMINUM CAP STAMPED "B01", APPROXIMATELY 3 INCHES UNDER DUFF SURFACE, BEARS S 89 1/2° W, 94 3/4 FEET DISTANT (AS PER RECORD).

#194X

C.S. File No. 62/50-12 C

RENEWAL

Monument Set (Procedure and Description)

Monument Detail

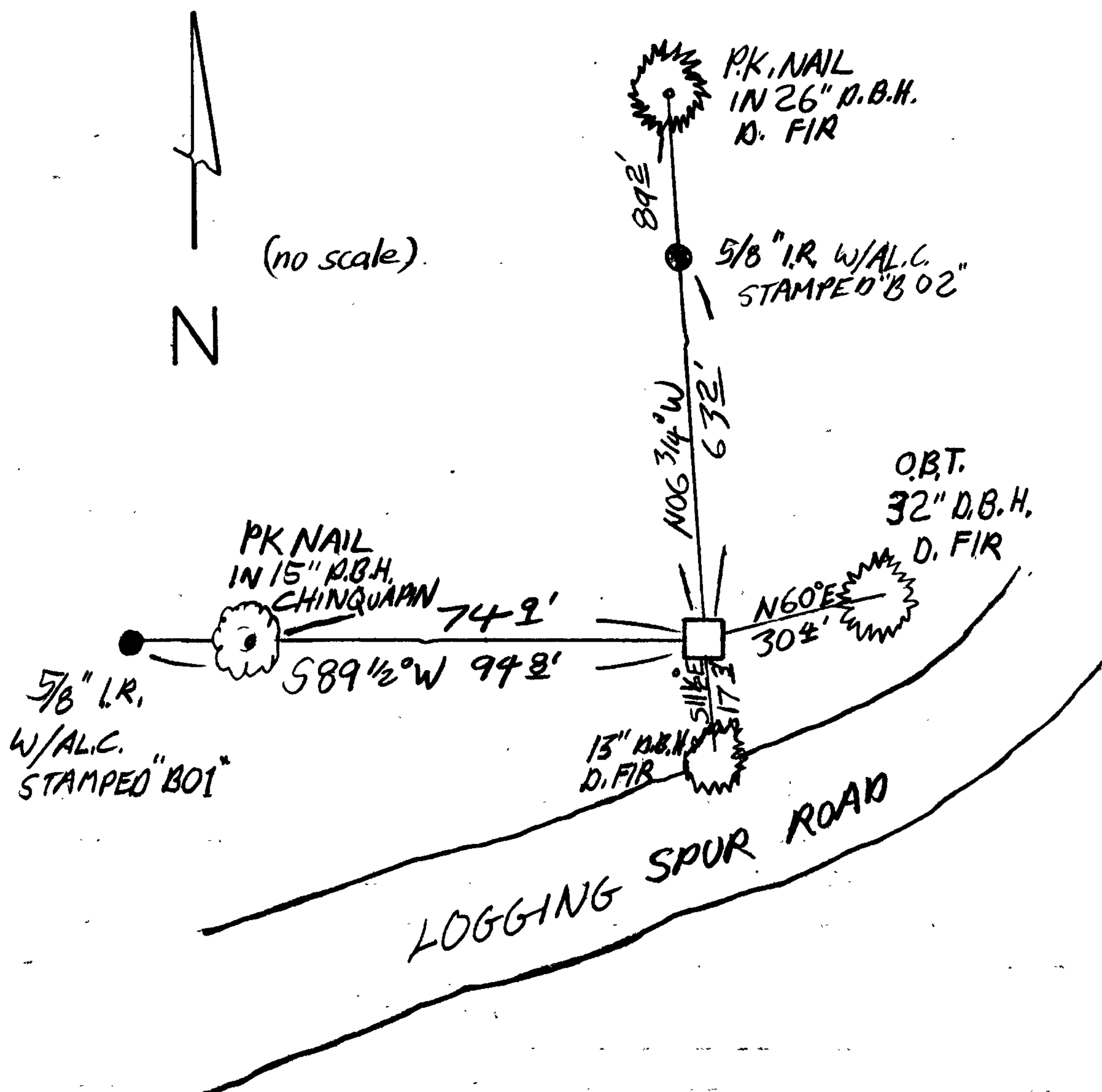
BRASS CAP MONUMENT AGREES WELL WITH ACCESSORIES. STONE MONUMENT IS LEFT IN FOUND POSITION AS AN ACCESSORY TO B.C.

N/A

New Accessories

N/A

Sketch of Monument, Accessories, and General Area



Location & Comments

MONUMENT LIES APPROX. 30 FT NORTH OF SPUR LOGGING ROAD ON MODERATELY STEEP NORTHWEST SLOPE.

Comp. Declin. 18° E
 Agency DCSO
 Party Chief STEPHEN JOHN FLAISE
 Notekeeper Stephen John Flaese
 Witnesses R.W. SMITH

Address

Surveyor's Seal

REGISTERED
 PROFESSIONAL
 LAND SURVEYOR

Larry E. Monrean

OREGON
 JULY 13, 1979
 LARRY E. MONREAN
 #1830