

GOVERNMENT CORNER RESTORATION FORM

Township 26S Range 6W Sec. 28 County DOUGLAS

State OREGON Date FEBRUARY 12, 1988 No. _____

Corner Designation

W.C.

529 | 528

532 | 533

- Condition Report Only
- Not Found
- Renewed
- Unrecorded
- Surveyed In
- Referenced Out

Previous Renewals #60, #125, #189

Monument(s) Found: (Condition and Source)

FOUND B.C. MONUMENT AS DESCRIBED
 IN RENEWAL # 189 BUT NOW 12 INCHES
 BELOW GROUND SURFACE HAVING BEEN
 BURIED SOME BY NEW ROAD FILL.

Accessories Found:

FOUND ALL ACCESSORIES AS DESCRIBED IN RENEWAL # 189
 WITH THE EXCEPTION OF 543°W D. FIR; THIS IS NOW A
 1 1/2 FOOT TALL 40 INCH DIAMETER FIR STUMP WITH PART OF
 THE UPPER BLAZE AND THE ENTIRE LOWER BLAZE REMAINING
 INTACT. BOTH BLAZES REMAIN FULLY HEALED.

#190x

RENEWAL

Monument Set (Procedure and Description)

Monument Detail

N/A

N/A

New Accessories

N/A

Sketch of Monument, Accessories, and General Area

N/A

Location & Comments

MONUMENT IS NOW
38 FEET EAST OF CENTERLINE
TO COUNTY RD. #6.

Comp. Declin. 18 1/4° E
Agency OCSO
Party Chief Stephen John Flause
Notekeeper STEPHEN JOHN FLAUSE
Witnesses R.W. SMITH

Address

Surveyor's Seal

REGISTERED
PROFESSIONAL
LAND SURVEYOR

Larry E. Monrean

OREGON
JULY 13, 1979
LARRY E. MONREAN
#1830

GOVERNMENT CORNER RESTORATION FORM

Township 26S Range 6W Sec. 28 County DOUGLAS

State OR Date 5/13/87 No. _____

Corner Designation

WIT.	529	528
COR.	532	533

Condition Report Only
 Not Found
 Renewed
 Unrecorded
 Surveyed In
 Referenced Out

Previous Renewals #60, #125

Monument(s) Found: (Condition and Source)

A DCSO 2 1/2" DIA. BC ON AN I.P.
SET 6 IN. BELOW GROUND. PER REN #60

NOTE: DATE ON BC/I.P. APPEARS TO BE
1966 SHOULD BE 1956

: CORNER SET BY SURVEY USING
PLAT - E. ROSEBURG HOME - ORCHARD TRAIL
(DATE 1909) TIE TO SECTION CORNER
PER REN #60

Accessories Found:

29" NOW 32" DIA. D. FIR WITH A FULLY HEALED DOUBLE BLAZE
BEARS S43°W, 124.0 FT (REC S43°W, 125.9 FT) PER REN #60

12" NOW 12" DIA DOWN AND ROTTED BLACK OAK, NO BLAZES OR SCRIBING
FOUND, BEARS N85 1/2°W, 89.6 FT TO ROOT HOLE (AGREES WITH REC.)
PER REN #60

8" NOW 11" DIA. BLACK OAK WITH A FULLY HEALED SINGLE BLAZE
BEARS N73°W, 113.2 FT (AGREES WITH REC.) PER REN #125

MONUMENT DETAIL

COUNTY SURVEYORS OFFICE

T26S R6W

WIT	29	28	COR.
	32	33	

13.4 EAST TO
SEC. COR
1966

#189 ✓

62/50-10
C.S. File No. 59/30 C

RENEWAL

Monument Set (Procedure and Description)

Monument Detail

NONE

N/A

BEARINGS AND DISTANCES TAKEN TO ALUM. NAIL AT BASE OF TREES

New Accessories (REFERENCE POINTS)

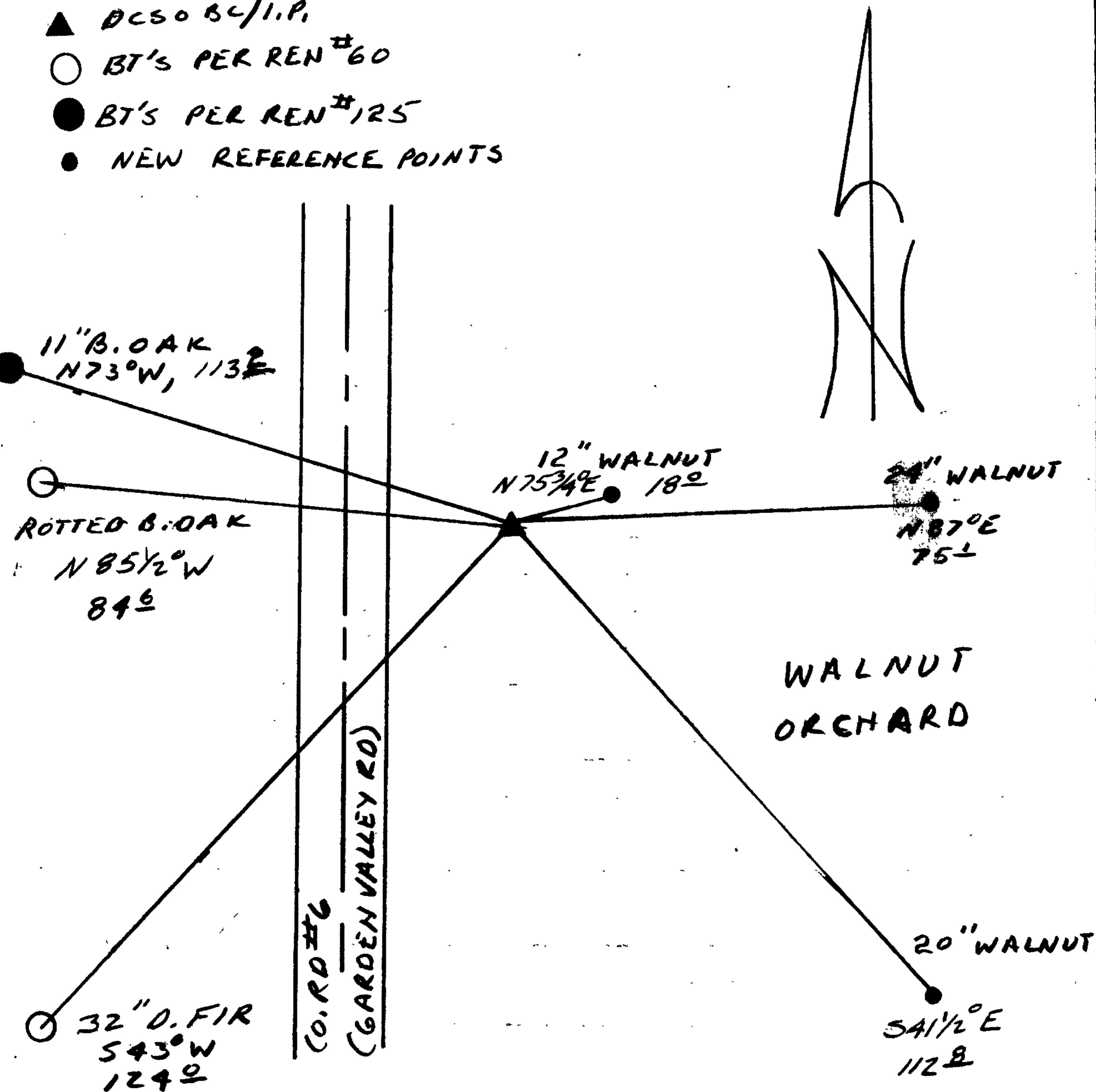
12" DIA. WALNUT WITH ALUM. NAIL AT BASE, BEARS N75 3/4° E, 18.0 FT.
APPLE - PER G. HEICHEL, RD. DEPT. 7/24/87

24" DIA. WALNUT WITH ALUM. NAIL AT BASE, BEARS N87° E, 75.1 FT.

20" DIA. WALNUT WITH ALUM. NAIL AT BASE BEARS S41 1/2° E, 112.8 FT

Sketch of Monument, Accessories, and General Area

- ▲ DCSO B.C./I.P.
- BT'S PER REN #60
- BT'S PER REN #125
- NEW REFERENCE POINTS



Location & Comments

WITI CORNER LIES AT WEST EDGE OF A WALNUT ORCHARD APPROX 27 FT EAST OF CENTERLINE TO CO. RD #6 (GARDEN VALLEY RD).

WITI CORNER MAY BE DISTURBED BY ROAD CONSTRUCTION IN NEAR FUTURE

Comp. Declin. 18 1/2° E
Agency DCSO
Party Chief RANDALL W SMITH
Notekeeper Randall W Smith
Witnesses STEPHEN J FLAUSE

Address

SURVEYOR'S SEAL
REGISTERED
PROFESSIONAL
LAND SURVEYOR

Larry E. Monrean

OREGON
JULY 13, 1979
LARRY E. MONREAN
#12830