

GOVERNMENT CORNER RESTORATION FORM

Township T25S Range 2E Sec. 10 County DOUGLAS

State OREGON Date MARCH 30, 1988 No. \_\_\_\_\_

Corner Designation

$\frac{1}{4}$   
S10 | S11

- \_\_\_\_\_ Condition Report Only
- \_\_\_\_\_ Not Found
- Renewed
- \_\_\_\_\_ Unrecorded
- \_\_\_\_\_ Surveyed In
- \_\_\_\_\_ Referenced Out

Previous Renewals # 5 (REFERENCE NOTES)

MONUMENT DETAIL

Monument(s) Found: (Condition and Source)

NA

ROTTED REMAINS OF CEDAR STUMP PROTRUDING APPROXIMATELY 6 INCHES ABOVE GROUND FROM DEAD BUT SOUND CEDAR ROOTS. GROWTH PATTERN OF ROOTS INDICATE THEY PROBABLY SUPPORTED A SMALL TREE. AREA HAS BEEN LOGGED AND BURNED. NO EVIDENCE IS FOUND OF THE SCRIBED TRUNK OF THE CORNER TREE.

Accessories Found:

ONE ORIGINAL BEARING TREE FOUND. A CEDAR 10 INS. DIAM. NOW A 16 INCH D.B.H. FALLEN AND BURNED CEDAR WITH PARTIAL ILLEGIBLE SCRIBING VISIBLE ON A PREVIOUSLY OPENED AND NOW BURNED BLAZE. THE WELL DEFINED ROOT-HOLE OF THIS TREE BEARS N159°E, 12.5 FEET DISTANT (AS PER ORIGINAL RECORD). NO EVIDENCE IS FOUND OF THE ORIGINAL NORTHWEST BEARING TREE.

ALL "NEW ACCESSORIES" FROM RENEWAL # 5 FOUND. A  $\frac{5}{8}$ " x 36" I. ROD WITH A  $1\frac{1}{2}$ " ALUM. CAP STAMPED "S80-30W 70.7' R.M." WITH AN ARROW POINTING TOWARD THE CORNER POSITION IS FIRMLY SET AND PROTRUDES APPROXIMATELY 7 INCHES ABOVE GROUND AND BEARS N79°E, 70.7 FEET DISTANT (RECORD N 80°30'E, 70.7 FT.).

A 17" CEDAR NOW A 19 INCH D.B.H. INCENSE CEDAR WITH THE SCRIBING " $\frac{1}{4}$  S11 CS RT" VISIBLE IN A PARTIALLY HEALED DOUBLE BLAZE BEARS N19°E, 56.1 FEET DISTANT (RECORD N18°E, 56.1 FT.)

A  $\frac{5}{8}$ " x 36" I. ROD WITH A  $1\frac{1}{2}$ " ALUM. CAP STAMPED "S47-30W 64.9 R.M." WITH AN ARROW POINTING TOWARD THE CORNER POSITION IS FIRMLY SET AND PROTRUDES APPROXIMATELY 5 INCHES ABOVE GROUND AND BEARS N41 $\frac{1}{2}$ °E, 66.9 FEET DISTANT (RECORD N47°30'E, 64.9 FT.)

#114

RENEWAL

Monument Set (Procedure and Description)

Monument Detail

THE CORNER POSITION IS PERPETUATED BY ESTABLISHING A BRASS CAP MONUMENT WITHIN THE APPARENT REMAINS OF THE CORNER TREE. THIS POSITION AGREES WELL WITH THE WELL DEFINED REMAINING EVIDENCE OF THE ORIGINAL NORTHEAST BEARING TREE. TWO OUT OF THREE DISTANCES TO THE REFERENCES FROM RENEWAL # 5 AGREE WELL WITH RECORD AND THE DISTANCE TO THE NINE REFERENCE WOULD INDICATE A POSSIBLE ERROR IN SLOPE MEASUREMENT. BEARINGS FROM CORNER TREE REMAINS TO THE REFERENCES FROM RENEWAL # 5 INDICATE A POSSIBLE PROBLEM WITH COMPASS DECLINATION.

DOUGLAS COUNTY SURVEYORS

T 25 S

1/4 S10/S11

R 2 E

1988

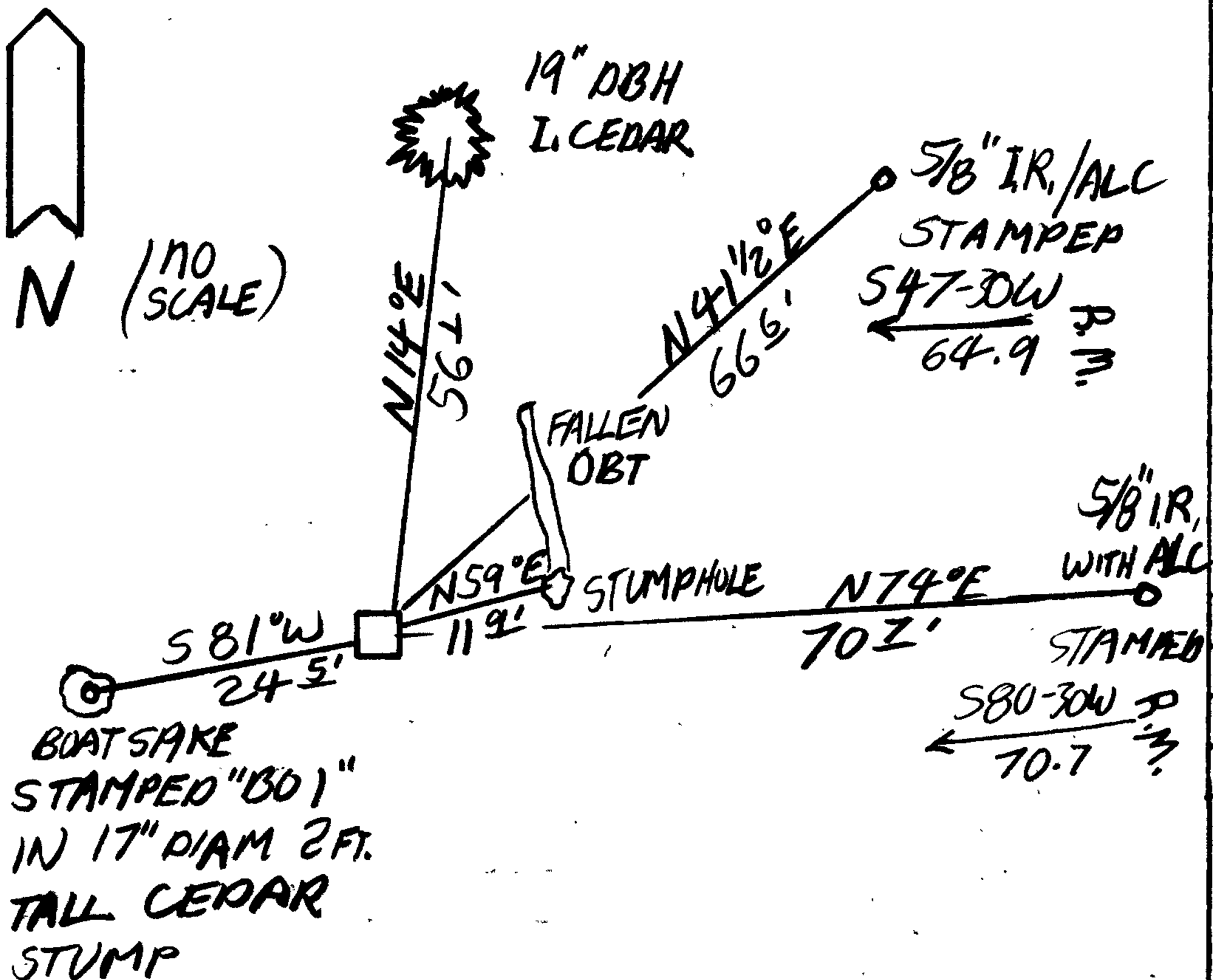
MONUMENT SET IS A 2 3/8 INCH DIAMETER BRASS CAP MARKED AS AT RIGHT ON A 1 INCH IN. 32 INCH LONG IRON PIPE PROTRUDING 10 INCHES ABOVE GROUND.

New Accessories

A 17 INCH DIAMETER 2 FOOT TALL CEDAR STUMP WITH A BOAT SPIKE DRIVEN INTO STUMP THROUGH A BEARING TREE TAG. BOAT SPIKE IS STAMPED "B O 1" AND BEARS S 81° W, 24 5 FEET DISTANT FROM B. C. MONUMENT.

Sketch of Monument, Accessories, and General Area

Location & Comments



MONUMENT ON A NORTHWEST SLOPE AT TOP OF CLEARCUT AND JUST OFF OF LOG LANDING AT TURN TO EAST IN USFS ROAD # 3850

Comp. Declin. 18° EAST
Agency DCSD
Party Chief STEPHEN JOHN FLAISE
Notekeeper Stephen John Flaize
Witnesses RW SMITH

Address

Surveyor's Seal

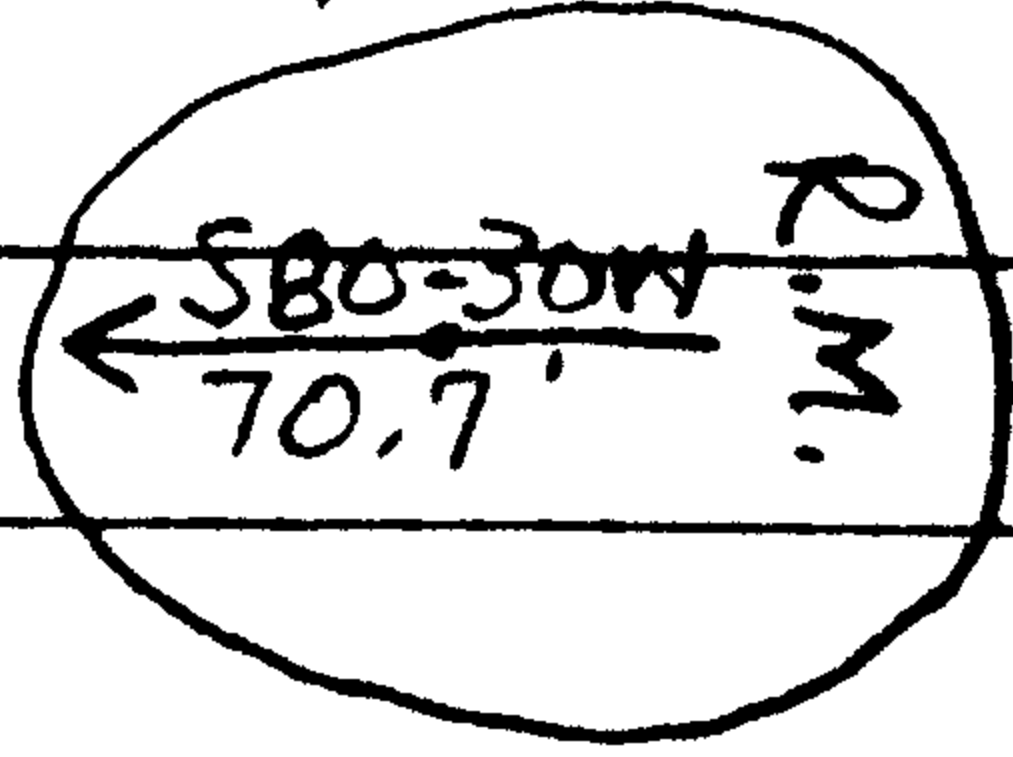
REGISTERED PROFESSIONAL LAND SURVEYOR

Signature of Larry E. Monrean

OREGON JULY 13, 1979 LARRY E. MONREAN #1830

NEW ACCESSORY:

A 5/8" x 36" IRON ROD WITH A 1 1/2" ALUM CAP ATTACHED BEARS N 80° 30' E, 70.7 FT. CAP IS STAMPED

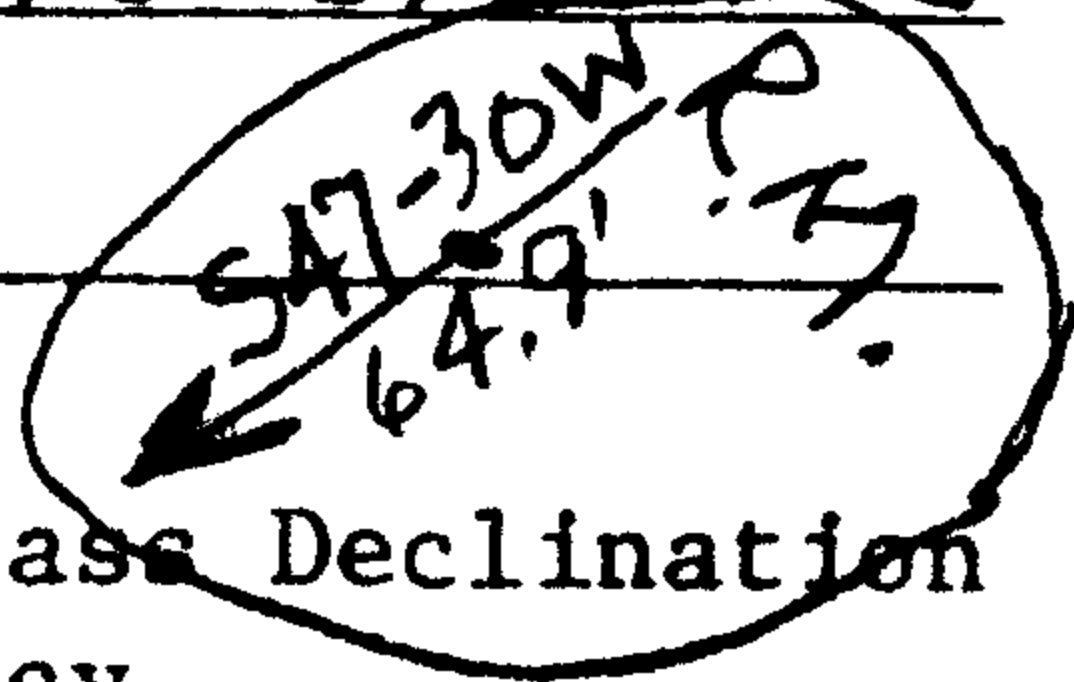


RENEWAL

Monument Set: (Procedure and Description) NONE.

THIS CORNER FALLS IN A PROPOSED LANDING & WILL THEREFORE BE DESTROYED DURING CONSTRUCTION.

New Accessories: (Description) A 17" CEDAR BEARS N 18° E, 56.1 FT. SCRIBED "1/4 S 11 CS BT" ON A DOUBLE BLAZE. A 5/8" x 36" IRON ROD WITH A 1 1/2" ALUM. CAP ATTACHED BEARS N 47° 30' E, 64.9 FT. CAP IS STAMPED



Location and Comments:	<u>20° 30' EAST</u>	Compass Declination
PLACED COUNTY	<u>U.S.F.S.</u>	Agency
B.T. SIGNS ON	<u>DENNIS GAYLORD</u>	Party Chief
ALL 3 B.T.'S	<u>" "</u>	Notekeeper
AND ON CORNER	<u>BILL WEST</u>	Witnesses
TREE	_____	
	_____	

OK  
JWL

T 25 S, R 2 E

DATE: 10/26/78

1/4 S10 | S11

Condition Report Only  
 Not Found  
 Renewed  
 Unrecorded  
 Surveyed In  
 Referenced Out

Previous Renewal #'s \_\_\_\_\_

Monument(s) Found: (Condition and Source) 7" CEDAR

~~SEE~~ CORNER TREE IS STILL STANDING,  
 BUT NEARLY DEAD.  
 UNHEALED BLAZES SHOW SCRIBING OF "1/4"  
 ON THE WEST AND "S11" ON THE EAST.

Accessories Found: (Condition and Source) A 11" HEMLOCK

SNAG WITH A HEALED BLAZE BEARS ~~N~~ 49° 30' ~~W~~  
 13.1 FT. (RECORD N 46° W, 11.88 FT.)

A 16" CEDAR <sup>SNAG</sup> BEARS N 62° 30' E, 11.9 FT.  
 (RECORD N 59° E, 12.54 FT.) PREVIOUSLY  
 OPENED BLAZE HAS SCRIBING, "1/4 S11 / BT"

✓ #5 ✓

C.S. File No. ~~59/30~~ Page 1 of 1  
 C

LOGGING NOT STARTED  
 AS OF 6-16-83

5 4 1/2 5, 5 1/2

C.S. File No. 62/50-9