

GOVERNMENT CORNER RESTORATION FORM

Township R2S Range 5W Sec. 13 County DOUGLAS

State OR Date JAN 20, 1988 No. _____

Corner Designation

$\frac{1}{4}$ $\frac{S13}{S24}$

- Condition Report Only
- Not Found
- Renewed
- Unrecorded
- Surveyed In
- Referenced Out

Previous Renewals #146

Monument(s) Found: (Condition and Source)

A 5/8" I.R. WITH "+" ON TOP
PROTRUDING 1 IN. ABOVE GROUND.
PER. REN #146

MONUMENT DETAIL

N/A

Accessories Found:

6" NOW 47" DIA. R. CEDAR WITH A POSSIBLE FULLY
HEALED SINGLE BLAZE, BEARS N45°E, 23.10 FT.
(AGREES WELL WITH RECORD) ORIG. BT

ORIG. SOUTHWEST BT NOT FOUND.

ORIG. ELK CREEK CALL CHECKED AND POSITION
AGREES WELL WITH ORIG. RECORDS (WEST 80.5 FT)

RENEWAL

Monument Set (Procedure and Description)

A 2 3/8 IN. BRASS CAP ON A 1/4 IN. OUTSIDE DIA. BY 3 IN LONG I.P. THAT PROTRUDES 6 IN ABOVE GROUND, MARKED AS AT RIGHT.

5/8" I.R. PER REN#146 REFERENCED AND BC/I.P. SET IN ITS PLACE. REN#146 5/8" x 40" LONG I.R. IS SET ALONG NORTH SIDE OF BC/I.P. PROTRUDING 4 IN. ABOVE GROUND.

Monument Detail

DOUGLAS COUNTY SURVEYORS
 T 22 S
 1/4 S 13
 S 24
 R 5 W
 1988

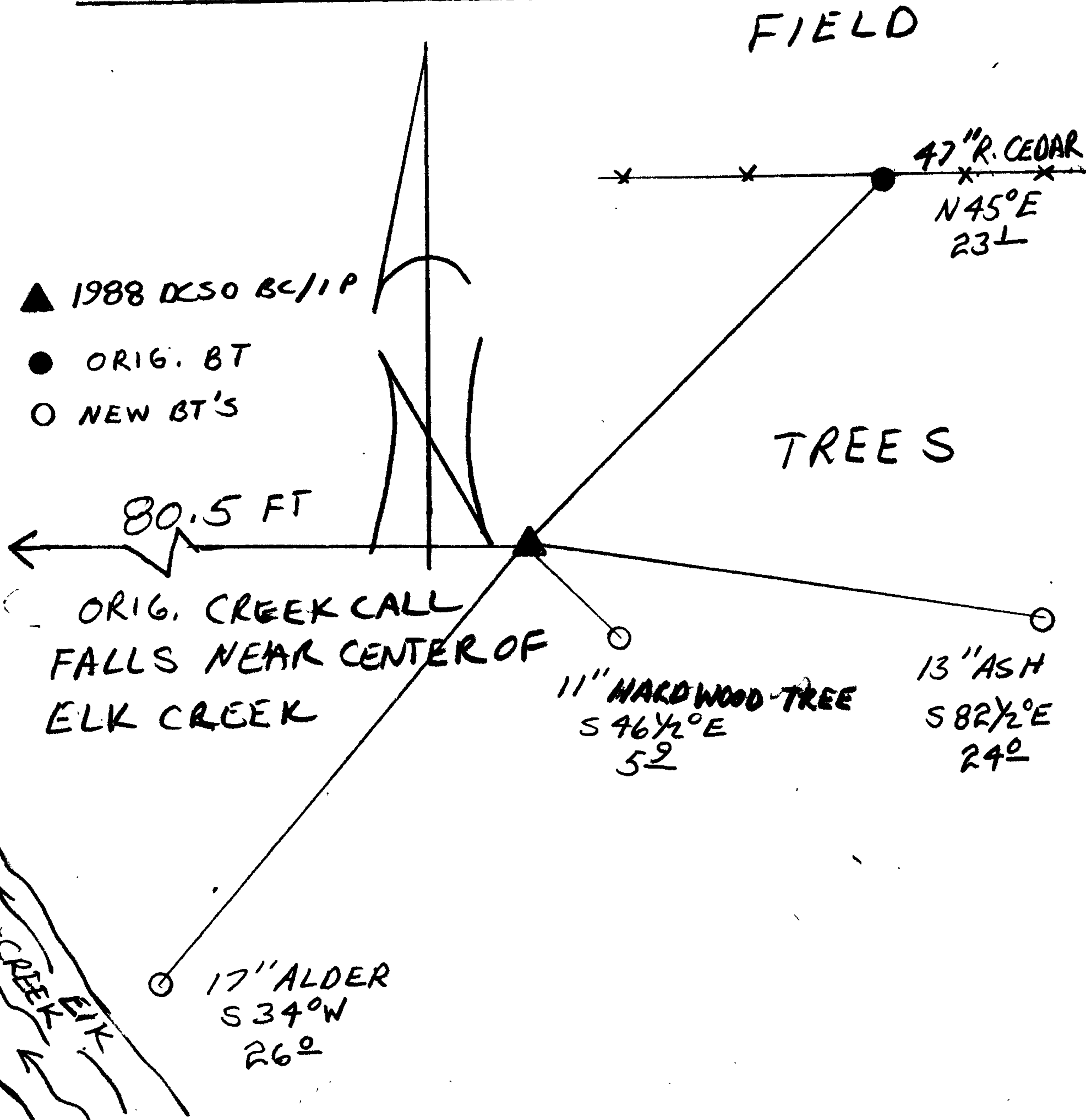
New Accessories

17" ALDER BARK SCRIBED "1/4 S 24 CS BT" BEARS S 34° W, 26.0 FT.

11" HARDWOOD TREE DOUBLE BLAZED AND SCRIBED "1/4 S 24 CS BT" BEARS S 46 1/2° E 5.9 FT.

13" ASH DOUBLE BLAZED AND SCRIBED "1/4 S 24 CS BT" BEARS S 82 1/4° E 2.4 FT.

Sketch of Monument, Accessories, and General Area



Location & Comments

CORNER LIES NEAR AN EAST-WEST FENCE LINE AND ELK CREEK, ON EAST SIDE OF CREEK.

Comp. Declin. 18 1/2° E
 Agency DCSO
 Party Chief RANDALL W SMITH
 Notekeeper Randall W Smith
 Witnesses STEPHEN J. FLAUSE

Surveyor's Seal

REGISTERED PROFESSIONAL LAND SURVEYOR

Larry E. Monrean

OREGON
 JULY 13, 1979
 LARRY E. MONREAN
 #1830