

GOVERNMENT CORNER RESTORATION FORM

Township 22S Range 5W Sec. 12 County DOUGLAS

State OR Date 1/21/88

No. \_\_\_\_\_

Corner Designation \_\_\_\_\_

$\frac{1}{4}$   $\frac{S12}{S13}$

FILED  
JAN 26 1988  
COUNTY SURVEYOR  
DOUGLAS COUNTY, OR

- Condition \_\_\_\_\_
- Not Found \_\_\_\_\_
- Renewed \_\_\_\_\_
- Unrecorded \_\_\_\_\_
- Surveyed In \_\_\_\_\_
- Referenced Out \_\_\_\_\_

Previous Renewals #115

Monument(s) Found: (Condition and Source)

A 1 IN. INSIDE DIA. ALUM. PIPE  
PROTRUDING 15 IN. ABOVE GROUND.  
(REC 3/4" ALUM. PIPE PER REN #115)  
SET PER REN #115

N/A

Accessories Found:

40" NOW 48" DIA. SHATTERED 4 FT HIGH D. FIR STUMP, MAIN  
TRUNK WITH AXE MARKS AND OLD BT TAG FOUND DOWN HILL  
(EAST) APPROX. 25 FT. STUMP BEARS N5°E, 71.9 FT. AGREES  
WITH RENEWAL REC. #115 ORIG. BEARING 155° N7°E (ORIG. BT)

8" NOW 12" DIA. 5 FT HIGH ROTTEN D. FIR STUMP, WITH  
SCRIBING VISIBLE " 1/4 S " BEARS S76°W, 72.6 FT AGREES  
WELL WITH REC. (ORIG. BT)

30" STILL 30" DIA. 40'+ TALL D. FIR SNAG VISIBLE SCRIBING ON A DOUBLE  
BLAZE " 1/4 S 12 CS BT " BEARS N82°E, 26.7 FT. AGREES WELL  
WITH REC. (PER REN #115).

10" NOW 19" DIA. W. FIR. WITH A FULLY HEALED DOUBLE  
BLAZE, BEARS S44 1/2°W, 39.4 FT, REC. S43°W, 39.4 FT.  
(PER REN #115)

#176 +

RENEWAL

Monument Set (Procedure and Description)

A 2 3/8 IN. BRASS CAP ON A 1/4 IN. OUTSIDE DIA. BY 31 IN LONG I.P. THAT PROTRUDES 5 IN. ABOVE GROUND.

1 IN. ALUM. PIPE PER. REN #115 REFERENCED AND BC/I.P. SET IN ITS PLACE. REN #115 1 IN. INSIDE DIA. BY 29 1/2 IN. LONG ALUM. PIPE IS SET ALONG NORTH SIDE OF BC/I.P. PROTRUDING 4 IN. ABOVE GROUND.

Monument Detail

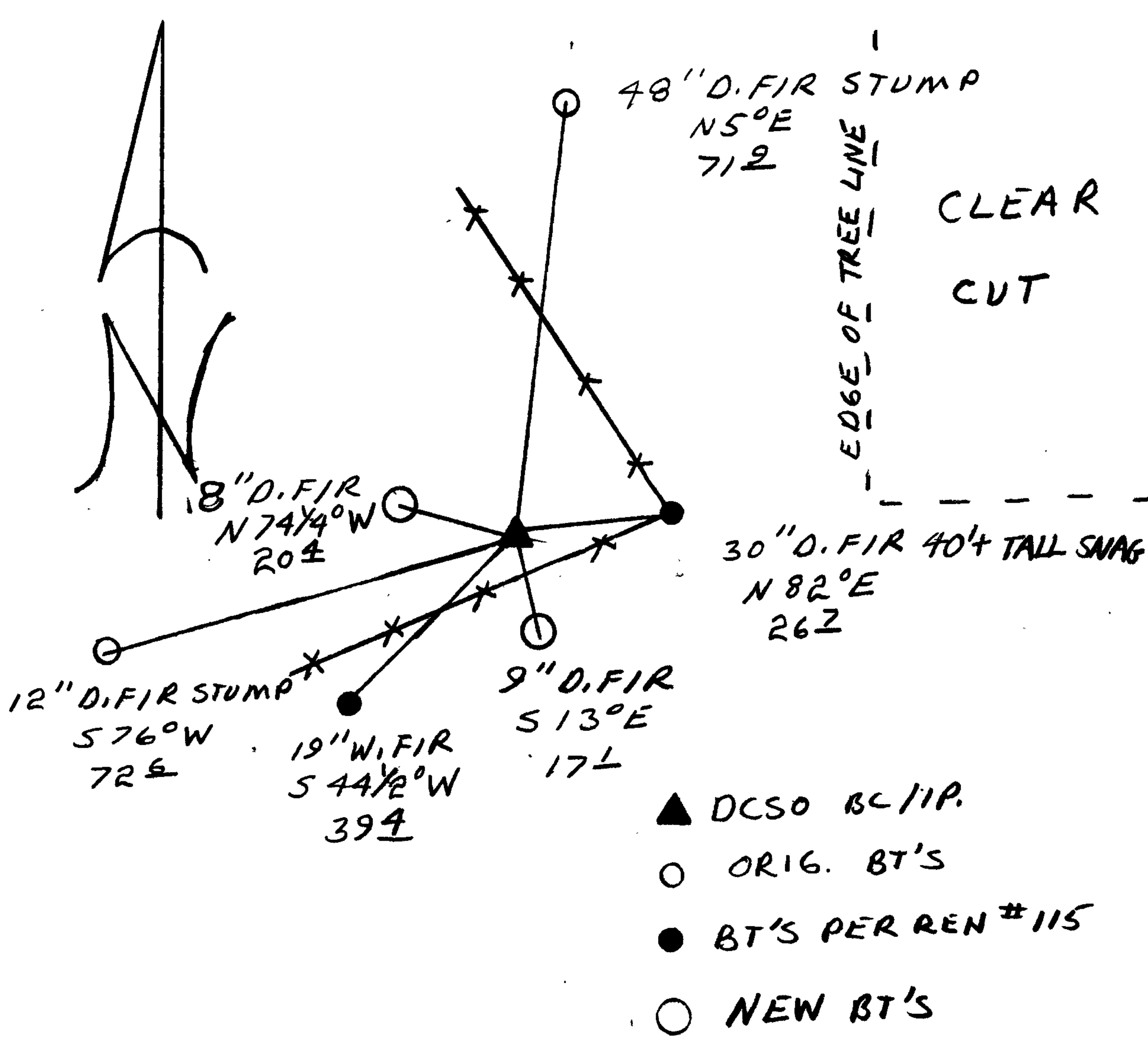
DOUGLAS COUNTY SURVEYORS  
T22S  
1/4 S12  
S13  
R5W  
1988

New Accessories

9" DIA. D. FIR DOUBLE BLAZED AND SCRIBED "1/4 S13 CS BT"  
BEARS S13°E, 17.1 FT.

8" DIA. D. FIR DOUBLE BLAZED AND SCRIBED "1/4 S12 CS BT"  
BEARS N74 1/4°W, 20.4 FT.

Sketch of Monument, Accessories, and General Area



Location & Comments

CORNER LIES NEAR THE SOUTHWEST CORNER OF A CLEAR CUT.

Comp. Declin. 18 1/2° E  
Agency DCSO  
Party Chief RANDALL W SMITH  
Notekeeper Randall W Smith  
Witnesses STEPHEN J. FLAISE

Surveyor's Seal

REGISTERED  
PROFESSIONAL  
LAND SURVEYOR

Larry E. Monrean

OREGON  
JULY 13, 1979  
LARRY E. MONREAN  
#1830