

GOVERNMENT CORNER RESTORATION FORM

Township 225 Range 4W Sec. 30 County DOUGLAS

State OREGON Date 1/28/88 No. _____

Corner Designation

1/4 530
531

- _____ Condition Report Only
- Not Found
- Renewed
- _____ Unrecorded
- _____ Surveyed In
- _____ Referenced Out

Previous Renewals #5, #101

MONUMENT DETAIL

Monument(s) Found: (Condition and Source)

COUNTY SURVEYORS OFFICE

A 2 1/2 INCH DIAMETER BRASS CAP (MARKED AS AT RIGHT) ON A 1 1/4 INCH O.D. IRON PIPE FIRMLY SET AND PROTRUDING 6 INCHES ABOVE GROUND (FROM RENEWAL #101).

T225

A 6x16x10 INCH SANDSTONE LOOSE ON GROUND SURFACE WITH THE MARKS "1/4" ON THE BOTTOM SIDE BEARS N 8° E, 1 1/2 FEET DISTANT FROM THE IRON PIPE AND BRASS CAP MONUMENT (FIRST NOTED IN RENEWAL #5, ORIGIN UNKNOWN)

1/4 530 R
531 4
W

1964

Accessories Found:

ONE ORIGINAL BEARING TREE FOUND, NORTHEAST BEARING TREE GONE. AN ORIGINAL FIR 10 INS. DIAM. NOW A 40 INCH D.B.H. DOUGLAS FIR WITH THE BARK SCRIBING "1/4 S 31 CS" (FROM RENEWAL #5) AND AN OPENED BLAZE WITH ORIGINAL SCRIBING "1/4 S" VISIBLE, BEARS S 60° E, 17 1/2 FEET DISTANT (AS PER ORIGINAL RECORD).

FROM RENEWAL #5 A 36" FIR NOW A 43 INCH DIAMETER 4 FT. HIGH FIR STUMP WITH NO SCRIBING REMAINING BEARS N 77° E, 58 1/2 FEET DISTANT (AS PER RENEWALS #5 AND #101)

TWO BEARING TREES NEW FROM RENEWAL #101 ARE FOUND. A 9" FIR NOW A 15 INCH D.B.H. DOUGLAS FIR WITH A FULLY HEALED SINGLE BLAZE BEARS N 62° W, 7 1/2 FEET DISTANT (AS PER RECORD). A 16" W. FIR NOW A 20 INCH D.B.H. WHITE FIR WITH A FULLY HEALED DOUBLE BLAZE BEARS S 52° W, 16 1/2 FEET DISTANT (AS PER RECORD).

#145 x

RENEWAL

Monument Set (Procedure and Description)

Monument Detail

N/A

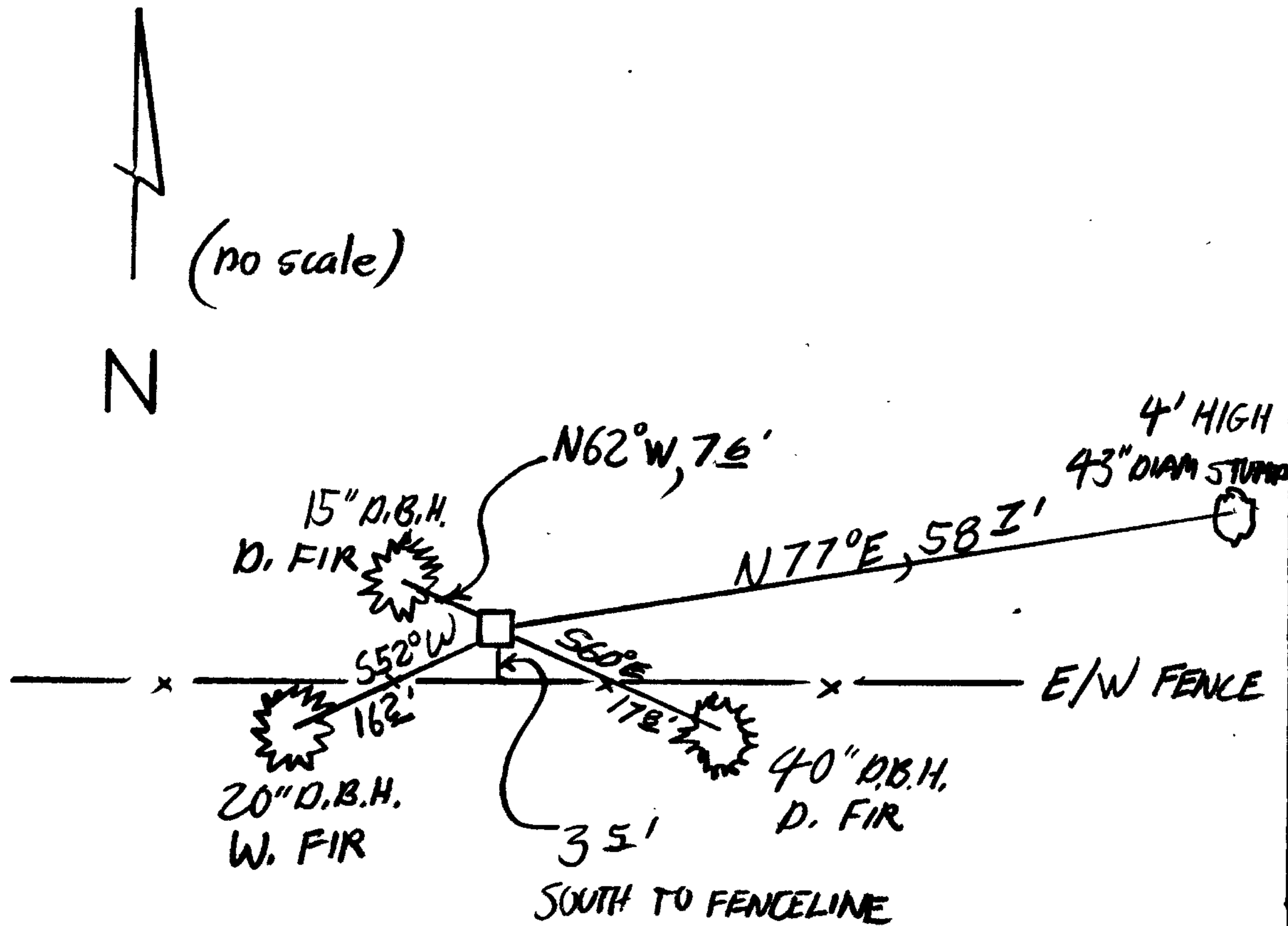
N/A

New Accessories

TREES AND STUMP TAGGED TO REFLECT NEW RECORD BEARINGS AND DISTANCES OF THIS RENEWAL.

Sketch of Monument, Accessories, and General Area

Location & Comments



MONUMENT IS ON WIDE BENCH OF EAST SLOPE OF RIDGE APPROX. 900 FEET ABOVE AND 900 FEET WEST OF ELK CREEK.

Comp. Declin. 18°14'E
Agency DCSO
Party Chief STEPHEN JOHN FLAUSE
Notekeeper Stephen John Flause
Witnesses R. W. SMITH

Address

Surveyor's Seal

REGISTERED
PROFESSIONAL
LAND SURVEYOR

Larry E. Monrean

OREGON
JULY 13, 1979
LARRY E. MONREAN
#1830