

GOVERNMENT CORNER RESTORATION FORM

Township 22S Range 4W Sec. 19 County DOUGLAS

State OREGON Date JANUARY 25, 1988 No. _____

Corner Designation

WC
R5W ^{1/4} R4W
S24 | S19

Previous Renewals # 130 T. 22-4 # 149 T. 22-5

Monument(s) Found: (Condition and Source)

A 5/8 INCH DIAMETER IRON ROD
FIRMLY SET AND PROTRUDING APPROXIMATELY
1 FOOT ABOVE GROUND.

(WHEN THIS MONUMENT IS REFERENCED
OUT AND REMOVED TO BE REPLACED BY
A BRASS CAP MONUMENT IT IS FOUND TO
BE 40 INCHES LONG.)

*NOTE: MAP M57-71 WHICH IS BASIS FOR
W.C. POSITION IN RENEWAL #130 WILL NOT
CLOSE PROPERLY IN THE SE 1/4 OF SECTION
24. THIS CLOSING ERROR INDICATES A SHORT-
FALL OF 100 FEET IN THE EAST LINE OF
THE NE 1/4, SE 1/4 OF SECTION 24. THIS WOULD
APPEAR TO BE A MAPPING ERROR BECAUSE
RELATIONSHIP OF THE WC TO CREEK AND THE
RELATIONSHIP OF THE CREEK AND ORIGINAL CALL FOR
Accessories Found: 1/4 CORNER APPEAR REASONABLE
IN THE FIELD.

NO EVIDENCE OF ORIGINAL BEARING TREES WAS FOUND. FROM RENEWAL #130
A 22" FIR NOW A 28 INCH D.B.H. DOUGLAS FIR WITH A FULLY HEALED
SINGLE BLAZE BEARS N 57 34° W, 6.9 FEET DISTANT (AS PER RECORD)

- Condition Report Only
- Not Found
- Renewed
- Unrecorded
- Surveyed In
- Referenced Out

MONUMENT DETAIL

N/A

#146 T. 22-4 X
#177 T. 22-5 X

RENEWAL

Monument Set (Procedure and Description)

Monument Detail

THE MONUMENT FROM RENEWAL #130 WAS SET AS A WITNESS CORNER TO A 1/4 CORNER POSITION DETERMINED BY PROPORTIONAL MEASUREMENT. WE CHECK ORIGINAL LINE CALL NORTH TO ELK CREEK AND FIND THAT THIS AGREES WELL WITH PROPORTIONED 1/4 CORNER POSITION. WE THEREFORE PERPETUATE THE LOCALLY ACCEPTED WITNESS CORNER POSITION AS FOLLOWS:

WE REFERENCE OUT AND REMOVE THE FOUND 5/8 INCH DIAMETER IRON ROD MONUMENT (FOUND TO BE 40 INCHES LONG) AND REPLACE IT WITH A 2 3/8 INCH DIAMETER BRASS CAP (MARKED AS AT RIGHT) ON A 1 1/4 INCH O.D., 30 INCH LONG GALVANIZED IRON PIPE SET PROTRUDING 7 INCHES ABOVE THE GROUND. THE IRON ROD MONUMENT FROM RENEWAL #130 IS RESET ON THE NORTH EDGE OF THE BRASS CAP MONUMENT AND NOW PROTRUDES 5 INCHES ABOVE GROUND.

New Accessories

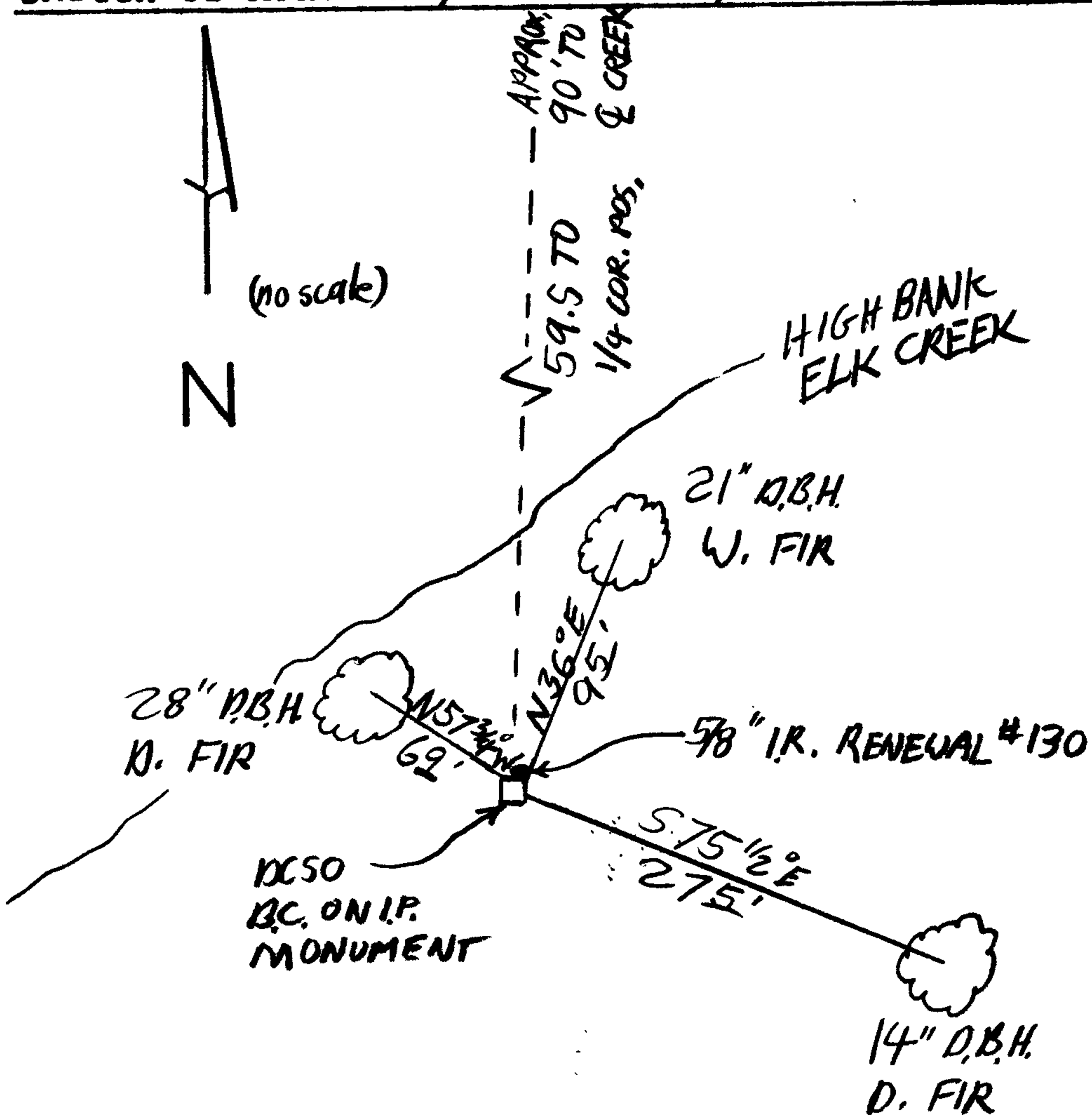
DOUGLAS COUNTY SURVEYORS OFFICE

WC T225
NORTH ↑ 59.5 FT
1/4
R5W | R4W
S24 | S19
1988

A 21 INCH D.B.H. WHITE FIR SCRIBED "WC 1/4 S19 CS BT" ON A DOUBLE BLAZE BEARS N36°E, 95 FEET DISTANT.

A 14 INCH D.B.H. DOUGLAS FIR SCRIBED "WC 1/4 S19 CS BT" ON A DOUBLE BLAZE BEARS S75 1/2°E, 278 FEET DISTANT.

Sketch of Monument, Accessories, and General Area



Location & Comments

MONUMENT IS LOCATED ON HIGH SOUTH BANK OF ELK CREEK AT BOSWELL ROAD (CO. RD #54) BRIDGE APPROXIMATELY 80 FEET WEST FROM THE ROAD CENTERLINE.

Comp. Declin. 18 1/2° E
Agency DC50
Party Chief STEPHEN J. FLAUSE
Notekeeper R.W. SMITH
Witnesses Stephen John Flause

Surveyor's Seal

REGISTERED PROFESSIONAL LAND SURVEYOR

Signature

OREGON
JULY 13, 1979
LARRY E. MONREAN
#1830