

GOVERNMENT CORNER RESTORATION FORM

Township 22S Range 13W Sec. 13 County DOUGLAS

State OREGON Date JAN 14, 1988 No. _____

Corner Designation

W $\frac{1}{16}$ $\frac{S12}{S13}$

- Condition Report Only
- Not Found
- Renewed
- Unrecorded
- Surveyed In
- Referenced Out

Previous Renewals M1-74, RENEWAL #50, M56-14
Monument(s) Found: (Condition and Source)

MONUMENT DETAIL

NO EVIDENCE OF EPSTEIN 2 1/2" IRON PIPE MONUMENT FOUND. FROM PCSO SURVEY M56-14 A 2 INCH I.D. IRON PIPE PROTRUDES 18 INCHES ABOVE GROUND

N/A

FILED

zh
JAN 21 1988

COUNTY SURVEYOR
DOUGLAS COUNTY, ORE

Accessories Found:

NONE

#29*

620500

C.S. File No. 62/42-4

Monument Set (Procedure and Description)

Monument Detail

A 3 INCH DIAMETER BRASS CAP (MARKED AS AT RIGHT) IS SET IN CONCRETE FLUSH AT TOP OF AN 8"x42" INCH CONCRETE BELL TIE. (FERROUS METAL IS PLACED INSIDE CONCRETE BELL TIE FOR FUTURE MAGNETIC DETECTION.)

THE BASIS OF BEARING IN SURVEY M56-14 WAS DETERMINED TO BE INCORRECT IN A SUBSEQUENT SURVEY AND THUS THE POSITION FOR THE W/1/6 BETWEEN SECTIONS 12 AND 13 AS SET IN M56-14 IS NO LONGER ACCEPTED. THE NEW POSITION FOR SAID W/1/6 CORNER WAS ESTABLISHED AT THE PRESCRIBED BEARING AND DISTANCE FROM THE LOCALLY ACCEPTED POSITION OF THE QUARTER CORNER BETWEEN SECTIONS 12 AND 13 IN T22S, R13W AS INDICATED IN THE U.S. MANUAL OF SURVEYING INSTRUCTIONS CHAPTER 3, SECTION 90.

DOUGLAS CO. SURVEYORS OFFICE

T22S

W/1/6 $\frac{S12}{S13}$

R13W

1988

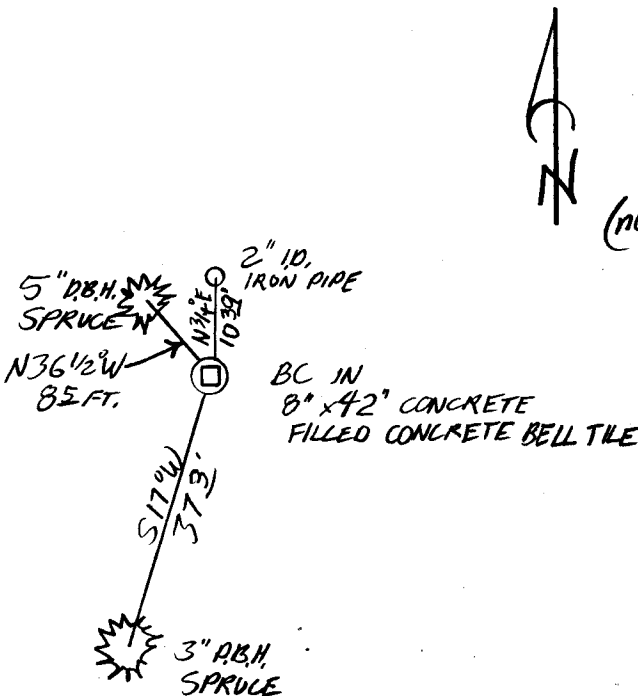
New Accessories

A 2 INCH I.D. IRON PIPE SET AS THE W/1/6 CORNER IN DC50 SURVEY M56-14 IS FIRMLY SET AND PROTRUDES 18 INCHES ABOVE GROUND AND BEARS N3/4°E, 10.39 FEET DISTANT.

A 5 INCH D.B.H. SPRUCE SCRIBED "W/1/6 S12 CS13" ON A DOUBLE BLAZE BEARS N36 1/2° W, 8.5 FEET DISTANT.

A 3 INCH D.B.H. SPRUCE SCRIBE "BT" ON A DOUBLE BLAZE BEARS S17°W, 37.3 FEET DISTANT.

Sketch of Monument, Accessories, and General Area



Location & Comments

MONUMENT IS APPROXIMATELY 50 FT. EASTERLY FROM A NAVIGATION AIR TOWER

Comp. Declin. 18 1/2° E

Agency DC50

Party Chief STEPHEN JOHN FLAUSE

Notekeeper *[Signature]*

Witnesses R.W. SMITH

Surveyor's Seal

REGISTERED PROFESSIONAL LAND SURVEYOR

[Signature]

OREGON JULY 13, 1979 LARRY E. MONREAN #1830