

GOVERNMENT CORNER RESTORATION FORM

Township 30S Range 5W Sec. 21 County DOUGLAS

State OREGON Date OCTOBER 14, 1987 No. _____

Corner Designation

521	522
528	527

- _____ Condition Report Only
- _____ Not Found
- Renewed
- _____ Unrecorded
- _____ Surveyed In
- _____ Referenced Out

Previous Renewals # 45, # 165, # 251A

Monument(s) Found: (Condition and Source)

FROM RENEWAL # 251A A 2 1/2 INCH DIAMETER BRASS CAP (MARKED AS AT RIGHT) ON A 1 1/4 INCH O.D. IRON PIPE FIRMLY SET AND PROTRUDING APPROXIMATELY 8 INCHES ABOVE GROUND. MONUMENT LEANS APPROXIMATELY 0.3 FEET WEST. GROUND AROUND MONUMENT IS DUG DOWN 6 TO 8 INCHES TO SEARCH FOR 1 INCH DIAMETER IRON PIN FIRST NOTED IN RENEWAL # 45 AND ALSO NOTED IN FOLLOWING RENEWALS; PIN IS NOT FOUND AT THIS DEPTH AND FURTHER DIGGING WOULD DISTURB FOUND MONUMENT. NO EVIDENCE OF SANDSTONE OR ROCK FROM RENEWAL # 45 FOUND. NO EVIDENCE OF ORIGINAL CORNER POST FOUND.

COUNTY SURVEYORS OFFICE

T30S R5W

521	522
528	527

1973

Accessories Found:

(OBTAINERS TO PLUMB POSITION OF CAP.)
 ORIGINAL BEARING TREES SEARCHED FOR NONE FOUND.
 FROM RENEWAL # 45 NO BEARING TREES FOUND.
 FROM RENEWAL # 165 TWO BEARING TREES FOUND. A 15" PINE NOW A 29" D.B.H. PINE WITH A FULLY HEALED SINGLE BLAZE BEARS N 71° E, 145.7 FEET DISTANT (AGREES WITH RECORD IN RENEWAL # 251A)
 A 14" PINE, NOW A 26" D.B.H. PINE WITH A FULLY HEALED SINGLE BLAZE BEARS S 70° 2' E, 93.8 FEET DISTANT (AGREES WITH RECORD IN RENEWAL # 251A).

RENEWAL

Monument Set (Procedure and Description)

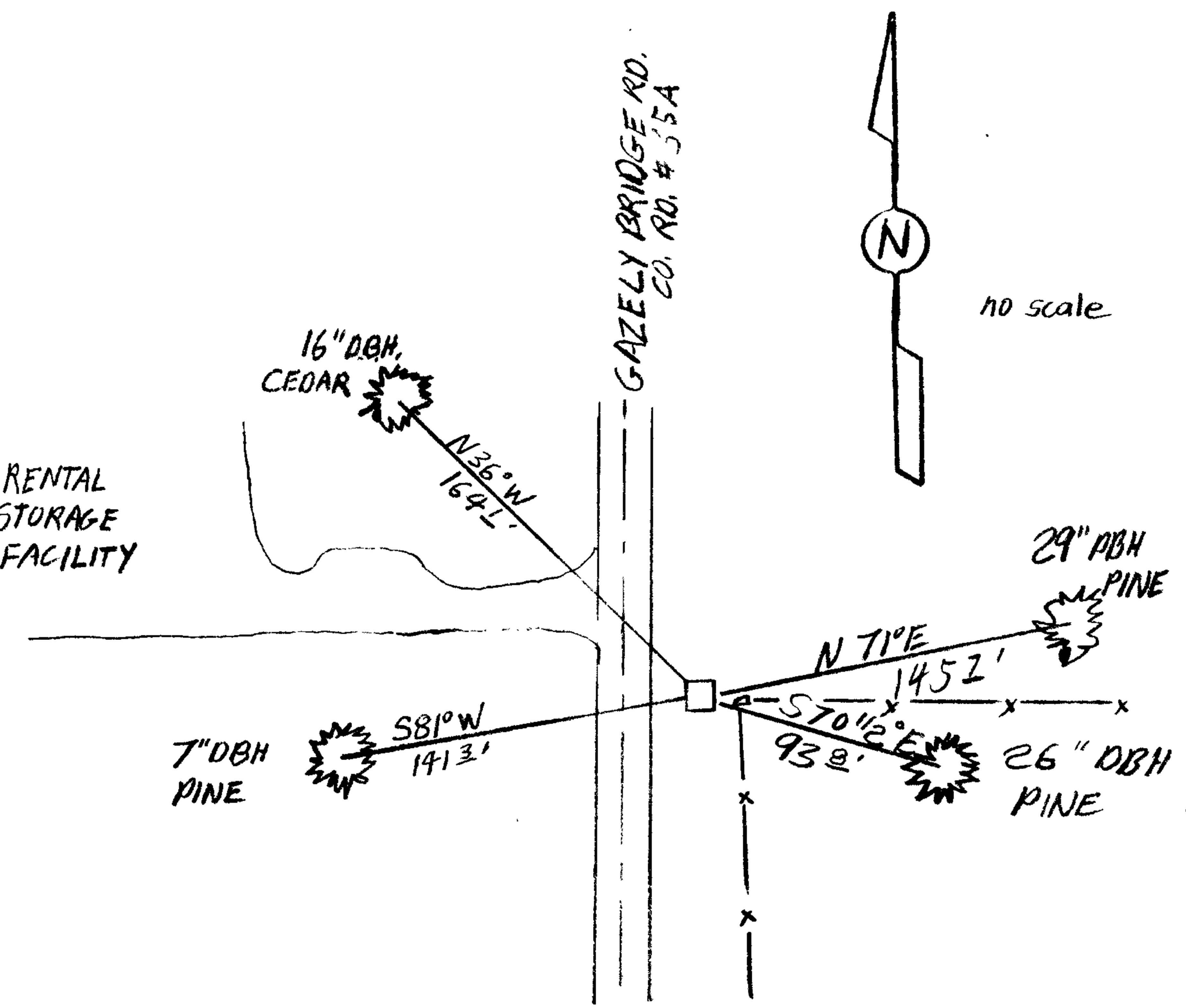
Monument Detail

BECAUSE OF AGREEMENT OF FOUND ACCESSORIES WITH PLUMB POSITION OF MONUMENT WE RESTORE FOUND MONUMENT TO PLUMB POSITION AND THEREBY PERPETUATE THE LOCALLY ACCEPTED POSITION OF THE SECTION CORNER.

New Accessories

A 7 INCH D.B.H. PINE SCRIBED "T30S R5W S28 CS BT" ON A DOUBLE BLAZE BEARS S81°W, 141.3 FEET DISTANT.
 A 16 INCH D.B.H. CEDAR SCRIBED "T30S R5W S21 CS BT" ON A DOUBLE BLAZE BEARS N36°W, 164.1 FEET DISTANT.

Sketch of Monument, Accessories, and General Area



Location & Comments

MONUMENT IS APPROXIMATELY 30 FEET EAST OF THE CENTERLINE OF GAZELY BRIDGE ROAD AND APPROXIMATELY 0.5 FEET NORTH-WESTERLY FROM THE CORNER OF FENCES RUNNING SOUTH AND EAST.

Comp. Declin. 18 1/2° E
 Agency DCSO
 Party Chief STEPHEN JOHN FLAISE
 Notekeeper Steve John Flaise
 Witnesses R.W. SMITH

Surveyor's Seal

REGISTERED
 PROFESSIONAL
 LAND SURVEYOR

Larry E. Monrean

OREGON
 JULY 13, 1979
 LARRY E. MONREAN
 #1830