

GOVERNMENT CORNER RESTORATION FORM

Township 28S Range 7W Sec. 27 County DOUGLAS

State OR Date AUG. 12, 1987 No. _____

Corner Designation (IS A POINT OF SURVEY)

INT ELL
DLC #50
NNW
DLC #53

- _____ Condition Report Only
- _____ Not Found
- Renewed
- _____ Unrecorded
- _____ Surveyed In
- _____ Referenced Out

Previous Renewals NONE OF RECORD

MONUMENT DETAIL

Monument(s) Found: (Condition and Source)

A 1 IN. I.D. I.P. WITH A 5" X 3" WIDE
STEEL CHISEL HEAD WELDED TO BOTTOM
OF I.P. WITH AN OVERALL LENGTH OF
34 IN. PROTRUDING 16 IN ABOVE GROUND.
(POSSIBLY SET PER M29-9)
LANDOWNER TO THE SOUTHWEST
COURTNEY MUEZEL WAS SHOWN BY
ARTHUR BOYER A NEWLY SET I.P. AND
FRESHLY SCRIBED OAK TREE IN 1946.

N/A

Accessories Found:
NO ORIG. BT'S FOUND
(UNRECORDED BT)

A 26" DIA. W. OAK PREVIOUSLY OPENED BY A PRIVATE SURVEYOR
NO SCRIBING VISIBLE BEARS S46°W, 137.1 FT AND PREVIOUS
RECORD OF THIS BT, LANDOWNER COURTNEY MUEZEL SAYS BT
SCRIBED BY ARTHUR BOYER IN 1946 (POSSIBLY SCRIBED PER M29-9).

#265 X

RENEWAL

Monument Set (Procedure and Description)

POSITION OF 1 IN. I.P. CHECKS WELL WITH PROPERTY PINS TO THE EAST AND WEST. RECENT SURVEY BY LARRY, DOLAN SHOWS I.P. TO FIT WELL WITH A PROPERTY PIN TO THE SOUTH (CS 63/33). 1 IN. I.P. ACCEPTED AS A POINT OF SURVEY USED TO LOCATE THE NEW CORNER OF DCSO TRACT AND THE INTERSECTION OF DCSO TRACT.

1 IN. I.P. REFERENCED AND A 1/4" O.D. BY 32 IN LONG I.P. WITH BRASS CAP PROTRUDING 8 IN ABOVE GROUND SET IN IT PLACE. 1" I.P. RESET ALONG SOUTH SIDE OF B.C./I.P. PROTRUDING 8 IN ABOVE GROUND.

Monument Detail

DOUGLAS COUNTY SURVEYORS
 T 28 S
 R 7 W S 27
 NNW | DLC 53
 1987
 OFFICE

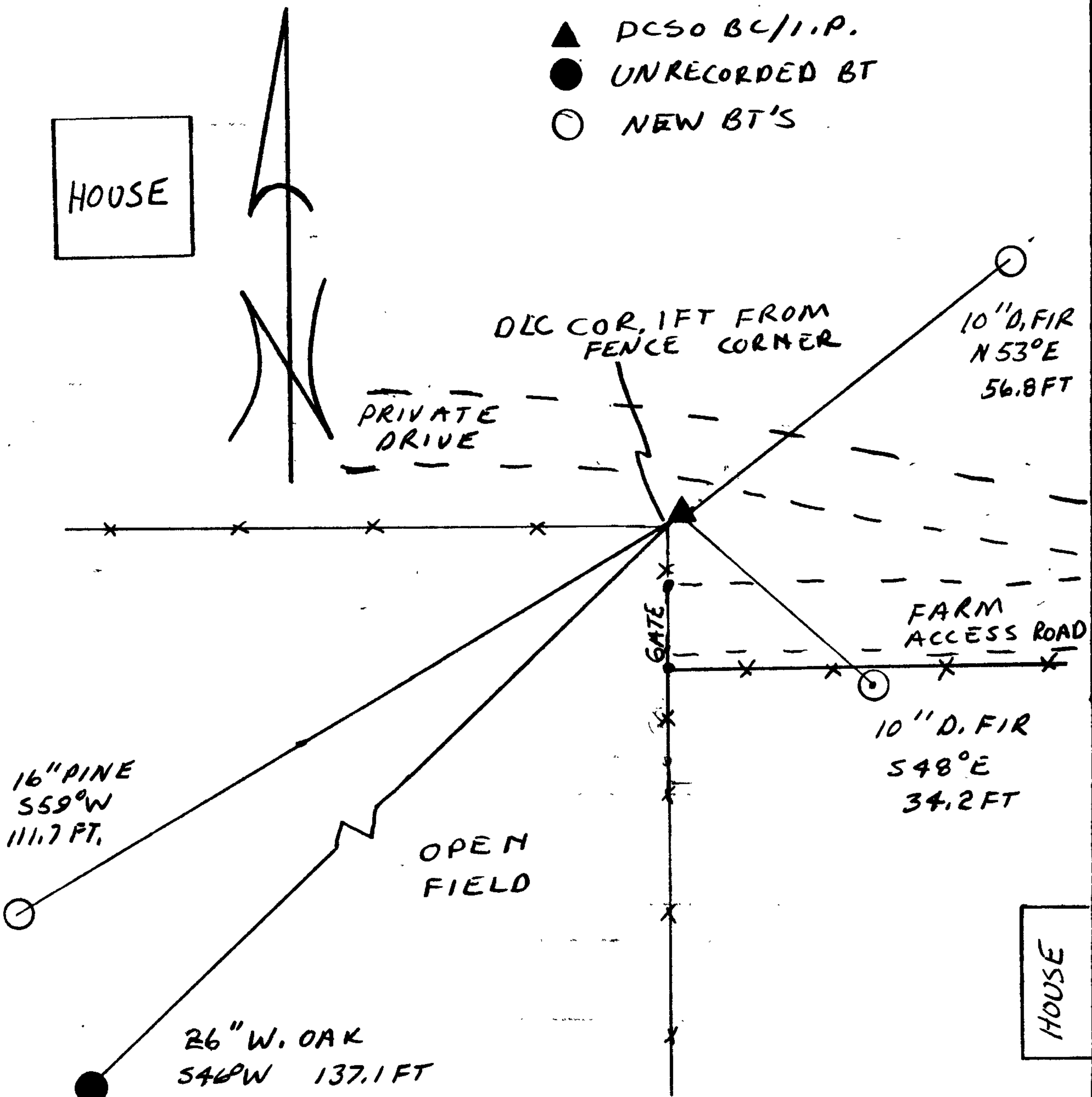
New Accessories

16" PINE DOUBLE BLAZED AND SCRIBED "INT L DLC 50 CS BT"
 BEARS 559°W, 111.7 FT.

10" D. FIR DOUBLE BLAZED AND SCRIBED "NNW DLC 53 CS BT"
 BEARS 548°E, 34.2 FT.

10" D. FIR DOUBLE BLAZED AND SCRIBED "INT L DLC 50 CS BT"
 BEARS N53°E, 56.8 FT.

Sketch of Monument, Accessories, and General Area



Location & Comments

CORNER IS NEAR A WEST AND SOUTH RUNNING FENCE LINE.

MONUMENT SET TO PERPETUATE THE APPARENT LOCALLY ACCEPTED CORNER.

Comp. Declin. 18 1/2° E
 Agency DCSO
 Party Chief RANDALL W. SMITH
 Notekeeper Randall W. Smith
 Witnesses STEPHEN J. FLAUSE

Address

Surveyor's Seal
 REGISTERED
 PROFESSIONAL
 LAND SURVEYOR

Surveyor's Signature

OREGON
 JULY 13, 1979
 LARRY E. MONREAN
 #1830