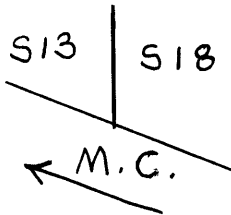


GOVERNMENT CORNER RESTORATION FORM

Township 27S Range 5W Sec. 18 County DOUGLAS

State OR Date 8/26/87 No. _____

Corner Designation



- Condition Report Only
- Not Found
- Renewed
- Unrecorded
- Surveyed In
- Referenced Out

Previous Renewals #25, #115, #133 IN T27S, R6W

Monument(s) Found: (Condition and Source)
A 5/8" I.R. WITH A THREE CORNERED FLANGE
THAT HAS A SMALL PRONG PROTRUDING
ON EACH CORNER. I.R. IS SET
IN RAILROAD GRADE ALONG SOUTH
SIDE OF TRACKS, 3 INCHES BELOW
GRAVEL SURFACE, WITH FLANGE AND
PRONGS UP (PER REN #25). (RECORDED
AS A 5/8" I.R. IN REN'S #25 AND #115 AND
A 3/8" I.R. IN REN #133).

MONUMENT DETAIL

N/A

Accessories Found:

CHANNEL IRON PER REN #25 NOT FOUND

19" NOW 19" W. OAK WITH A PREVIOUSLY OPENED FULLY HEALED SINGLE
BLAZE, BEARS S63°W, 117.4 FT (REC. S60 1/2°W, 117.4 FT) PER REN #25

TELEPHONE POLE #4 BEARS N69°W, 31.0 FT (REC. N71°W, 31.3 FT).
PER REN #133

YELLOW LOCATION TAG SET ON RAILROAD TIE IS GONE (PER REN #133).

I.R. IS LOCATED DUE SOUTH 7.7 FT (REC. 7.0 FT) AND
DUE WEST 10.3 FT (AGREES WITH REC.) OF SOUTH RAIL ROAD
TRACK (PER REN #133)

33 #115 (T. 27-5)
26-115-133 (T. 27-6)

T27-5 #167 ✓
T27-6 #178 ✓

RENEWAL

Monument Set (Procedure and Description)

Monument Detail

NONE

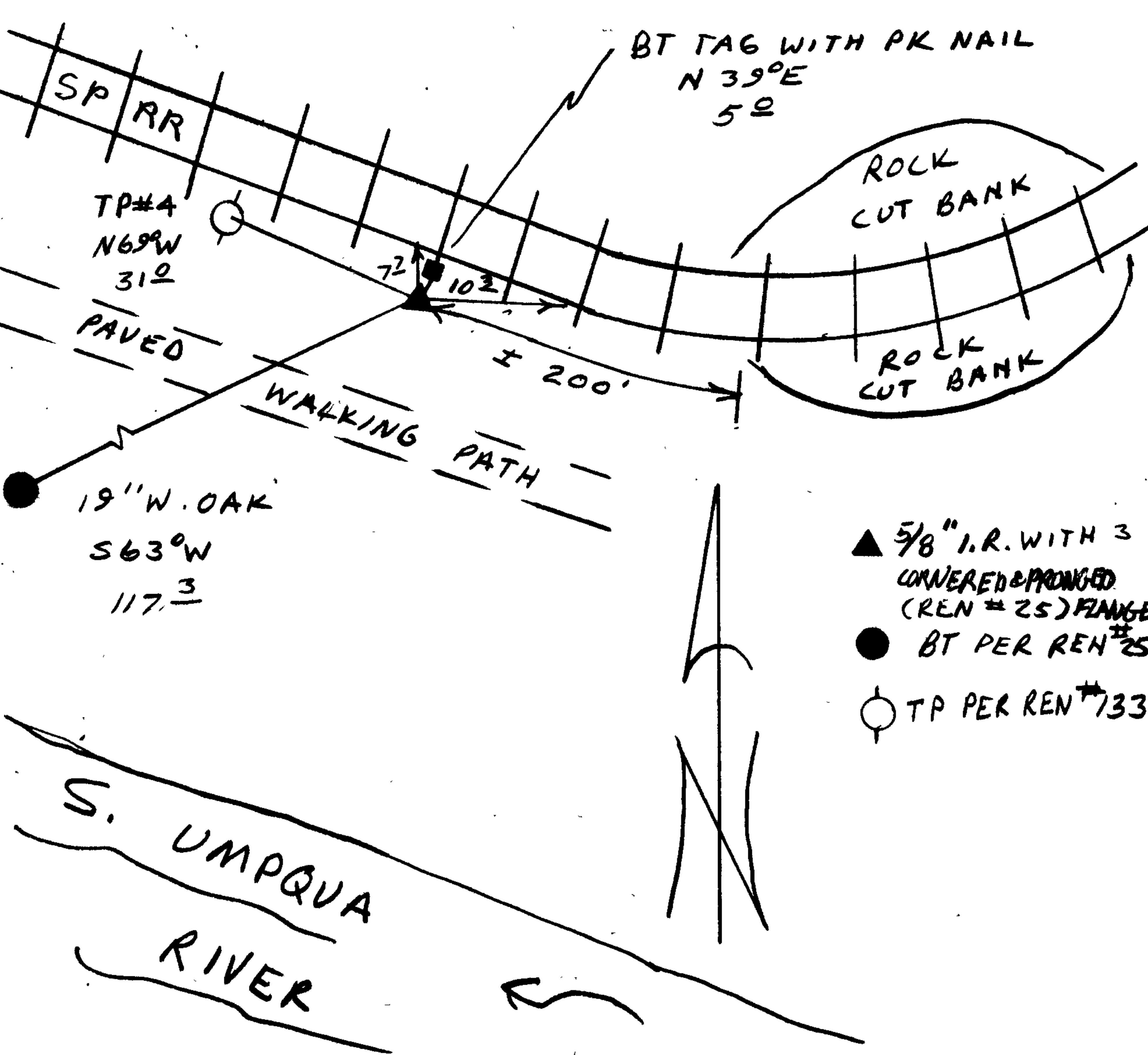
N/A

New Accessories

A BT TAG WITH PK NAIL ON RAILROAD TIE BEARS N39°E, 5.0 FT.

Sketch of Monument, Accessories, and General Area

Location & Comments



CORNER LIES IN RAILROAD GRADE APPROX 200 FT NORTHWESTERLY OF ROCK CUT BANKS

Comp. Declin. 1872°E
Agency DCSO
Party Chief RANDALL W SMITH
Notekeeper Randall W Smith
Witnesses STEPHEN J FLAUSE

Address _____

Surveyor's Seal

REGISTERED
PROFESSIONAL
LAND SURVEYOR

Larry E. Monrean

OREGON
JULY 13, 1979
LARRY E. MONREAN
#1830