

GOVERNMENT CORNER RESTORATION FORM

Township 27S Range 5W Sec. 18 County DOUGLAS

State OR Date 8/27/87 No. _____

Corner Designation

S13	S18
S24	S19

#11, #113 27-5

Previous Renewals #110, #130 IN T27S, R6W

Monument(s) Found: (Condition and Source)

A 1/2" X 1 1/2" IRON BAR (PER REN #110) WAS FOUND 27 IN. BELOW GROUND. AN UNRECORDED 1/2" X 4" IRON BAR WAS FOUND 3 IN. SOUTH OF 1/2" X 1 1/2" IRON BAR 27 IN. BELOW GROUND. A DCSO 2 1/2" BRASS CAP ON A 1/4" X 3/8" IRON PIPE (PER REN #130) WAS FOUND 8 IN. BELOW GROUND DOWN AND OUT OF POSITION THE BASE OF PIPE WAS 1 FT NORTHEAST OF 1/2" X 1 1/2" IRON BAR.

- Condition Report Only
- Not Found
- Renewed
- Unrecorded
- Surveyed In
- Referenced Out

MONUMENT DETAIL

COUNTY SURVEYORS OFFICE

T27S

R	S13	S18	R
6			5
W	S24	S19	W

1966

Accessories Found:

30" NOW BROKEN ROTTED AND DOWN POSSIBLE CHERRY TREE NEAR RECORD BEARING AND DISTANCE; PER REN #110

13" NOW 21" DIA. B. OAK WITH A FULLY HEALED DOUBLE BLAZE BEARS S20°E, 159.7 FT (AGREES WITH REC.) PER REN #130

BEACON TOWER ON MT. NEBO BEARS S64 1/2° W (AGREES WITH REC) PER REN #130

KPIC TV TOWER ON ROSE MT. BEARS N38 1/2° E (AGREES WITH REC) PER REN #130

FENCE POST GONE PER REN #130

T27-5 - #168 ✓
T27-6 - #179 ✓

RENEWAL

Monument Set (Procedure and Description)

RESET 1966 DCSO B.C./I.P. AT A PLUMB
 POSITION OVER REN# 110 1/2" X 1 1/2" IRON BAR.
 B.C./I.P. PROTRUDED 7 IN. ABOVE GROUND.

Monument Detail

COUNTY SURVEYORS OFFICE
 T 275

R	S13	S18	R
6			5
W	S24	S19	W

RESET 1987

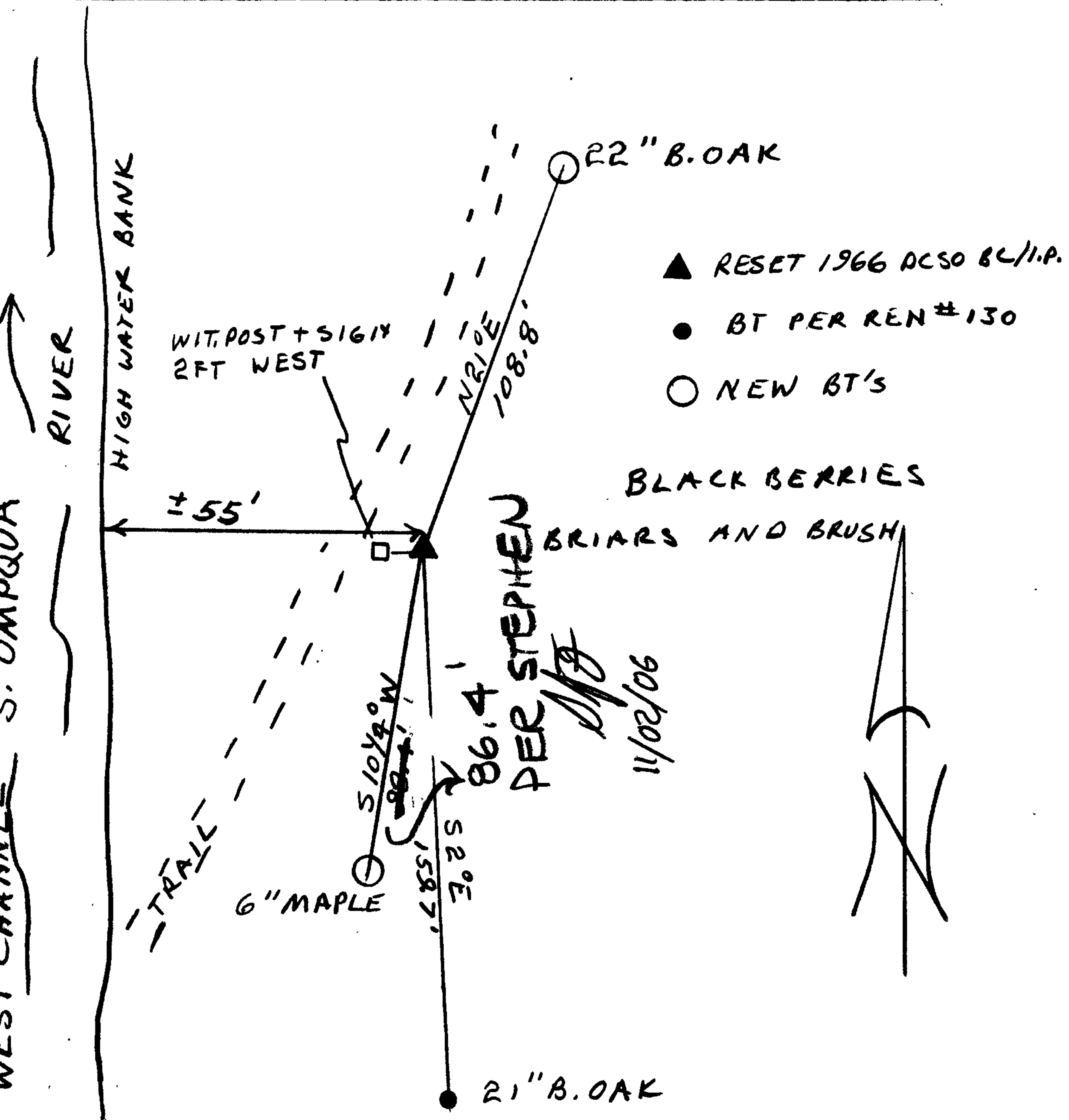
1966

New Accessories

22" B.OAK (DIA. TAKEN 2 1/2 FT ABOVE GROUND) WITH A DOUBLE BLAZE SCRIBED
 "T275 R5W S18 CS BT" BEARS N21°E, 108.8 FT.
 A DOUBLE TRUNKED MAPLE WITH A 6" DIA EASTERLY TRUNK DOUBLE BLAZED
 AND SCRIBED "T275 R6W S24 CS BT" BEARS S104°W, 86.4 FT. 86.4'
 SET A METAL WITNESS POST AND SIGN 2 FT WEST.

per
 SJF
 11/02/06

Sketch of Monument, Accessories, and General Area



Location & Comments

CORNER LIES NEAR MIDDLE
 ON WEST ^{SIDE} END OF ELK
 ISLAND IN ROSEBURG.

Comp. Declin. 18 1/2° E
 Agency DCSO
 Party Chief RANDALL W SMITH
 Notekeeper STEPHEN J FLAUSE
 Witnesses

Address

Surveyor's Seal

REGISTERED
 PROFESSIONAL
 LAND SURVEYOR

Larry E. Monrean

OREGON
 JULY 13, 1979
 LARRY E. MONREAN
 #1830