



RENEWAL

Monument Set (Procedure and Description)

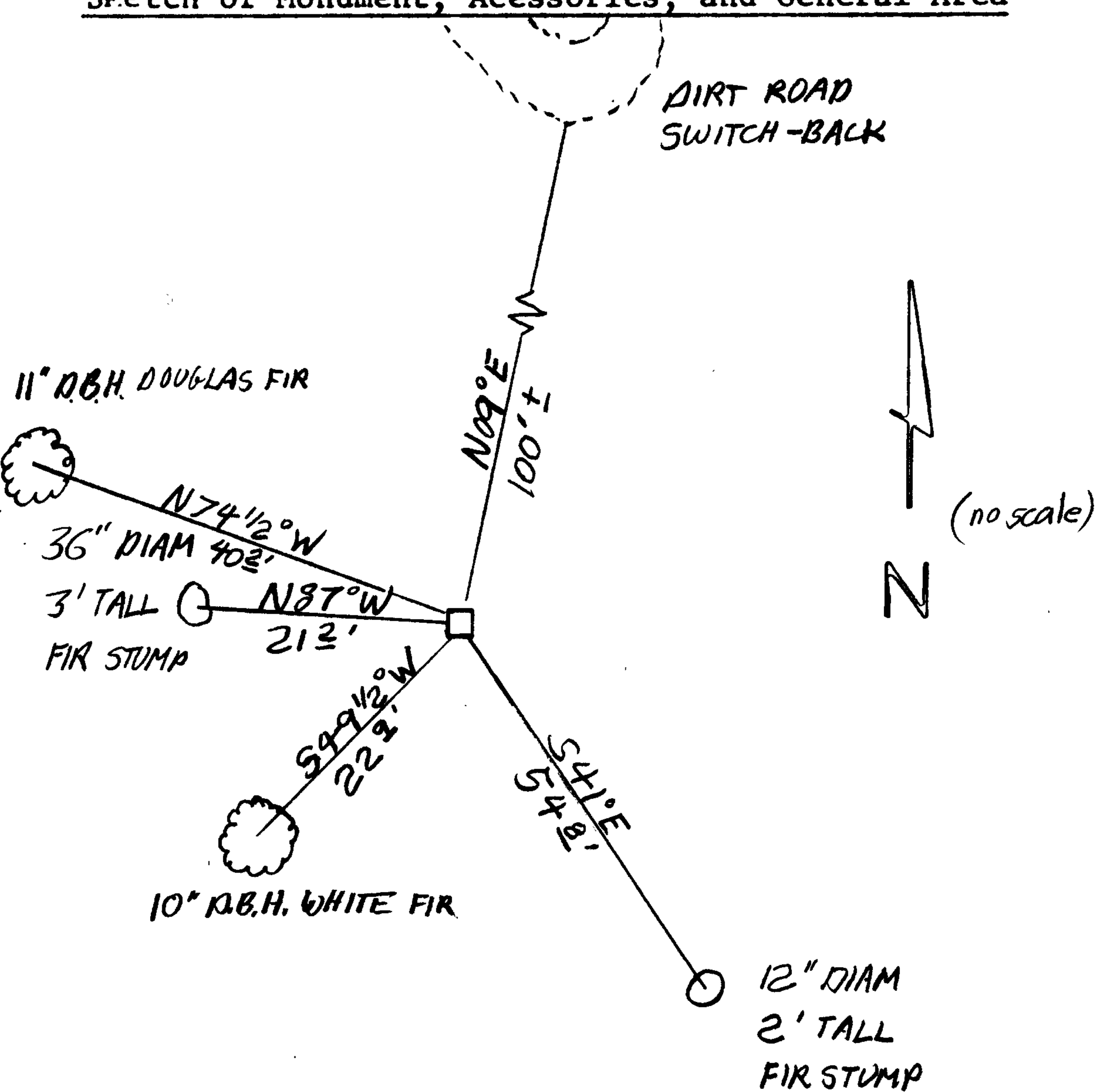
Monument Detail

MONUMENT POSITION IS PERPETUATED AS FOLLOWS

New Accessories

TWO NEW BEARING TREES ESTABLISHED. AN 11 INCH D.B.H. DOUGLAS FIR SCRIBED "1/4 S36 CS BT" ON A DOUBLE BLAZE, BEARS N 74 1/2° W, 40.2 FEET DISTANT. A 10 INCH D.B.H. WHITE FIR SCRIBED "1/4 S36 CS BT" ON A DOUBLE BLAZE, BEARS S 49 1/2° W 22.9 FEET DISTANT.

Sketch of Monument, Accessories, and General Area



Location & Comments

MONUMENT LIES IN BREAK OF STEEP EASTERLY SLOPE APPROX. 100 ± FEET S 09° W FROM NORTH-SOUTH SWITCH-BACK IN PRIVATE ROAD.

Comp. Declin. 18 1/2° E  
Agency PCSO  
Party Chief STEPHEN JOHN FLAUSE  
Notekeeper R.W. SMITH  
Witnesses Stephen John Flause

Address

Surveyor's Seal

REGISTERED PROFESSIONAL LAND SURVEYOR

*Larry E. Monrean*

OREGON  
JULY 13, 1979  
LARRY E. MONREAN  
#1830