

GOVERNMENT CORNER RESTORATION FORM

Township 27S Range 4W Sec. 21 County DOUGLAS

State OR Date 7/23/87 No. _____

Corner Designation

NNE
COR
DLC 44

- _____ Condition Report Only
- _____ Not Found
- Renewed
- _____ Unrecorded
- _____ Surveyed In
- _____ Referenced Out

Previous Renewals #4, #34

Monument(s) Found: (Condition and Source)

A STONE MEASURING 9" X 16" ON
TOP IS FIRMLY SET AND PROTRUDES
9" ABOVE GROUND. (REC. 7" X 14")
PER ORIGINAL DLC SURVEY.

A CHISELED "+" FOUND ON TOP OF STONE
PER REN. #34

N/A

MONUMENT DETAIL

Accessories Found:

BT'S PER REN #4
20" NOW 24" DIA. 25 FT HIGH BURNT OAK SNAG WITH A PREVIOUSLY
OPENED BLAZE, NO SCRIBING VISIBLE, BEARS N 7 1/2° E, 374.3 FT
(REC. N 70 1/2° E, 374.3 FT PER REN #4, REC PER REN #34 N 70 1/2° E, 372.5 FT)

24" NOW 33" DIA. B. OAK WITH A FULLY HEALED SINGLE BLAZE
BEARS S 45° E, 434.4 FT (AGREES WELL REC. PER REN #34, REC.
PER REN #4 - IS S 45° E, 436.3 FT)

BT'S PER REN #34
9" NOW 14" DIA. B. OAK WITH A FULLY HEALED DOUBLE BLAZE
BEARS S 44° W, 19.4 FT (AGREES WELL WITH REC.) BEARINGS AND
DISTANCE TAKEN TO BASE OF BLAZED NORTHERLY TRUNK OF A SMALL
GROUP OF FOUR TREES THAT ARE NOW GROWN TOGETHER.

14" NOW 21" DIA. B. OAK WITH A FULLY HEALED DOUBLE BLAZE
BEARS N 7° W, 30.9 FT (REC. N 9° W, 30.9 FT IS TO CENTER OF TRUNK
AT TOP OF UPPER BLAZE).

#148X

RENEWAL

Monument Set (Procedure and Description)

NONE

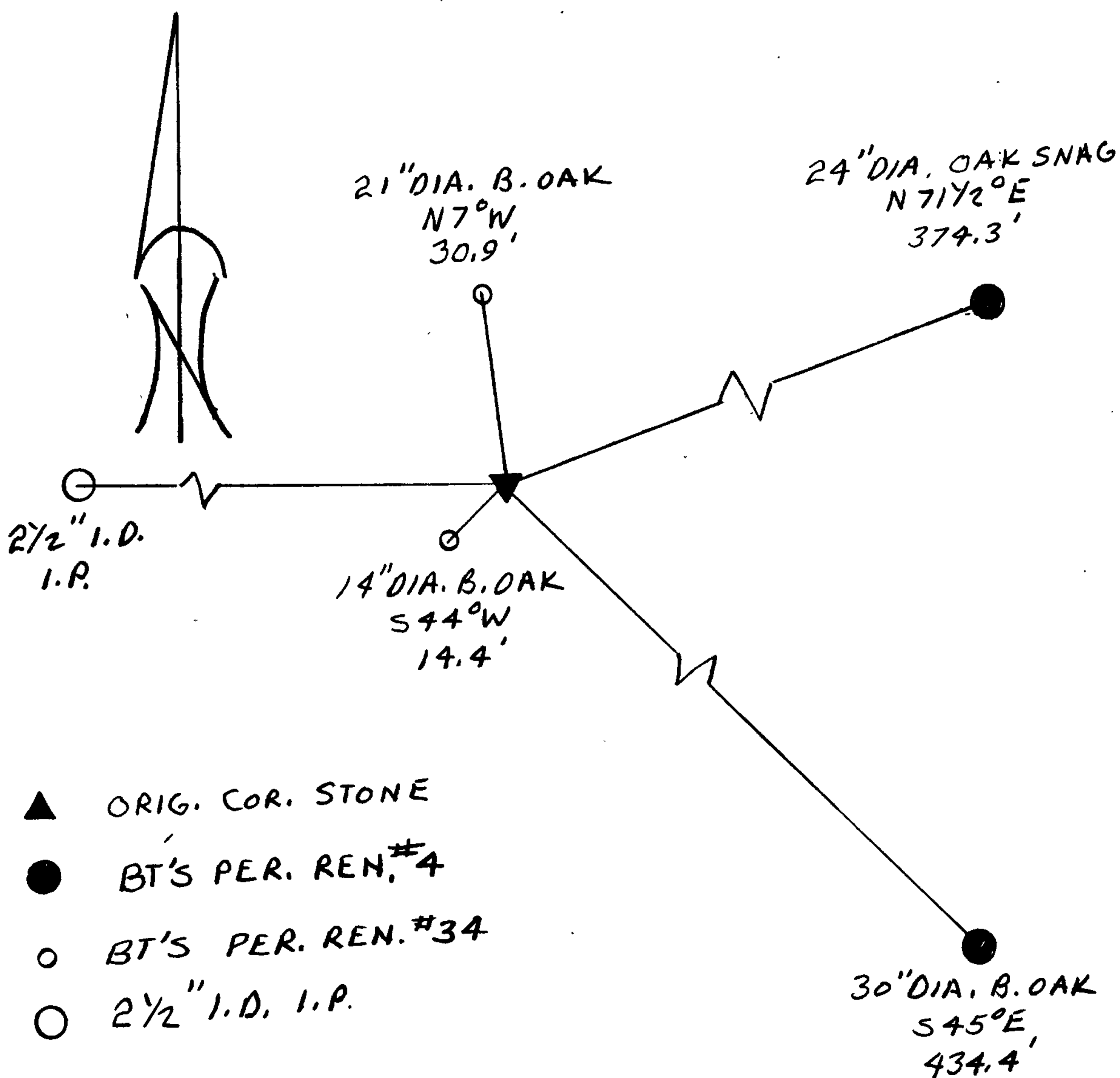
Monument Detail

N/A

New Accessories

A 2 1/2" I.D. I.P. FLUSH WITH GROUND, BEARS N 89° W, 225.8 FT
(POSSIBLE MONUMENT SET IN M59-64, BEARING AND DISTANCE AGREES
WELL WITH INFORMATION ON MAP, MAP SHOWS I.R. AT LOCATION
OF FOUND I.P.)

Sketch of Monument, Accessories, and General Area



Location & Comments

STONE IS IN A SMALL
GROUP OF OAK TREES, IN A
FIELD.

Comp. Declin. 18 1/2° E
Agency OLSO
Party Chief RANDALL W SMITH
Notekeeper Randall W Smith
Witnesses STEPHEN J. FLAUSE

Address

Surveyor's Seal

REGISTERED
PROFESSIONAL
LAND SURVEYOR

Larry E. Monrean

OREGON
JULY 13, 1979
LARRY E. MONREAN
#1830