

GOVERNMENT CORNER RESTORATION FORM

Township 27S Range 4W Sec. 20 County DOUGLAS

State OREGON Date 7/24/87 No. \_\_\_\_\_

Corner Designation

NW  
DLC 44

- Condition Report Only
- Not Found
- Renewed
- Unrecorded
- Surveyed In
- Referenced Out

Previous Renewals NONE BUT NOTED IN MAP M59-64

Monument(s) Found: (Condition and Source)

ORIGINAL 9x7 INCH STONE FIRMLY SET  
AND PROTRUDING 6 INCHES ABOVE GROUND  
A 5/8 INCH DIAMETER IRON ROD FROM  
SURVEY M59-64 FIRMLY SET ON EAST EDGE  
OF STONE MONUMENT AND PROTRUDING  
4 INCHES ABOVE GROUND.

NA

Accessories Found:

NO EVIDENCE OF ORIGINAL RAISED MOUND WITH TRENCH FOUND.

#147X

RENEWAL

Monument Set (Procedure and Description)

Monument Detail

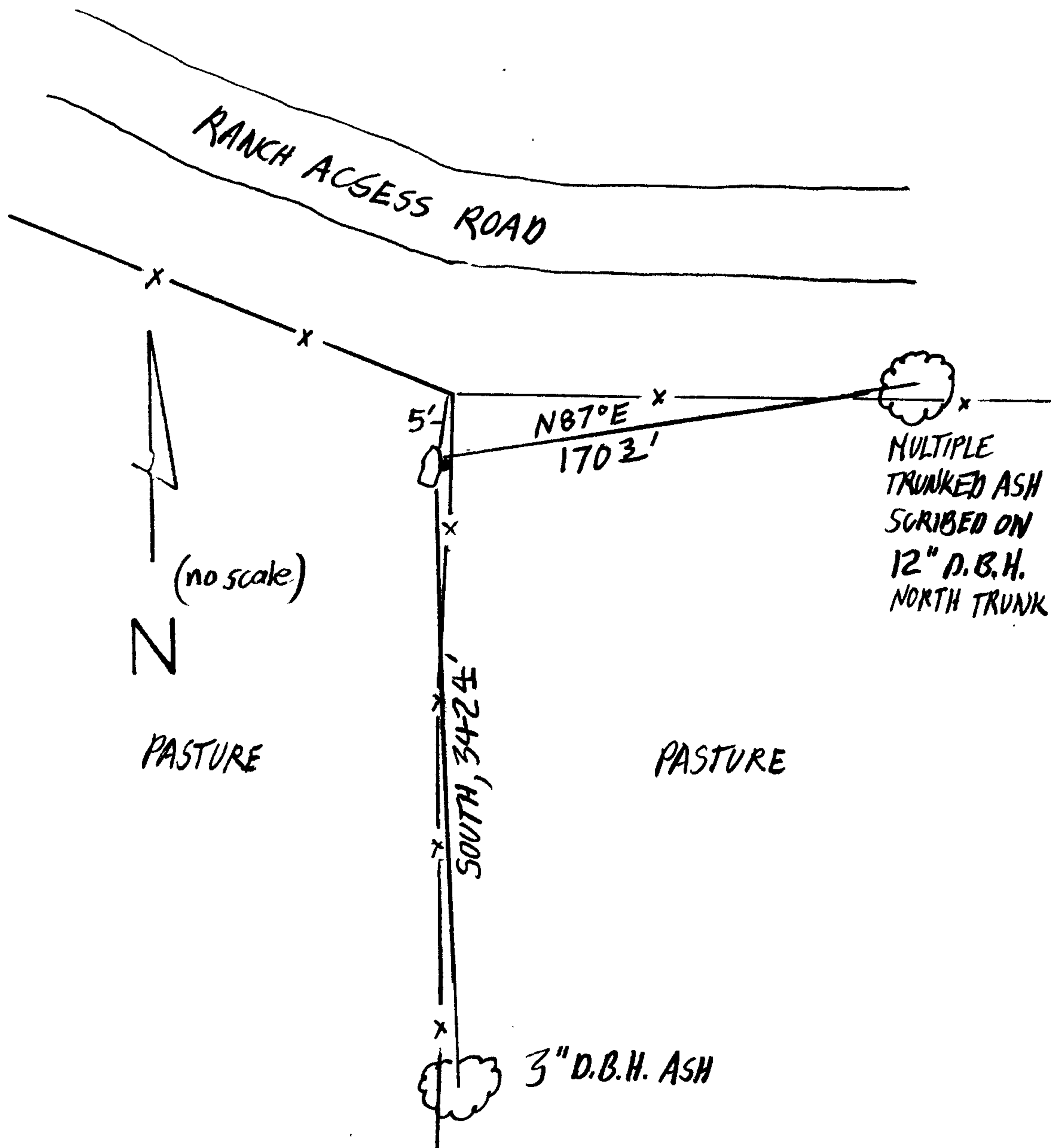
N/A

N/A

New Accessories

12 INCH D.B.H. NORTHERLY TRUNK OF MULTIPLE TRUNKED ASH SCRIBED NW DLC  
44 CS BT ON A DOUBLE BLAZE BEARS N 87° E, 170.3 FEET DISTANT (BEARING  
AND DISTANCE TO CENTER OF ROOT CROWN OF MULTIPLE TRUNK).  
A 3 INCH D.B.H. ASH SCRIBED X BT ON A SMALL DOUBLE BLAZE BEARS SOUTH,  
342.4 FEET DISTANT.

Sketch of Monument, Accessories, and General Area



Location & Comments

MONUMENT IS 0.5 FEET WEST OF  
NORTH-SOUTH FENCELINE AND 5 FEET  
SOUTH OF FENCE CORNER POST  
FROM WHICH FENCES RUN NORTHWEST,  
EAST AND SOUTH.

Comp. Declin. 18 1/2° E  
Agency DCSO  
Party Chief STEPHEN JOHN FLAISE  
Notekeeper Stephen John Flaise  
Witnesses R.W. SMITH

Address

Surveyor's Seal

REGISTERED  
PROFESSIONAL  
LAND SURVEYOR

Larry E. Monrean

OREGON  
JULY 13, 1979  
LARRY E. MONREAN  
#1830