

GOVERNMENT CORNER RESTORATION FORM

Township 245 Range 7W Sec. 29 County DOUGLAS

State OREGON Date 6/17/87 No. _____

Corner Designation

1/4
530 | 529

- Condition Report Only
- Not Found
- Renewed
- Unrecorded
- Surveyed In
- Referenced Out

Previous Renewals # 117

Monument(s) Found: (Condition and Source)

FROM RENEWAL # 117 A 2 1/2 INCH DIAMETER BRASS CAP (MARKED AS AT RIGHT) ON A 1 INCH I. D. IRON PIPE 36 INCHES LONG PROTRUDING 4 INCHES ABOVE GROUND FIRMLY SET BUT LEANING APPROXIMATELY 7 INCHES SOUTHERLY FROM PLUMB.

COUNTY SURVEYORS OFFICE

T245 R7W

1/4 530 | 529

1971

Accessories Found:

DISTANCES AND BEARINGS ARE CHECKED TO PLUMB POSITION OF CAP. TWO ORIGINAL BEARING TREES ARE FOUND. AN OAK 18 INS. DIAM. NOW A 31 INCH DIAMETER 4 1/2 FOOT TALL OAK STUMP WITH AN OPENED BLAZE WITH THE SCRIBING "1/4 S" VISIBLE BEARS S 32° E, 18 5 FEET DISTANT (ORIGINAL RECORD S 26° E, 18 5 FT. RENEWAL # 117 RECORD S 32° E, 18 5 FT.) AND AN OAK 12 INS. DIAM. NOW A 9 INCH D.B.H. WHITE OAK WITH A FULLY HEALED SINGLE BLAZE BEARS S 76° W, 137 3 FEET DISTANT. (AS PER ORIGINAL RECORD, HAND WRITTEN) NOTES FOR RENEWAL # 117 IN C.S. FILE 49/41 ALSO RECORD BEARING AND DISTANCE AS ABOVE, HOWEVER PRINTED RECORD OF THE RENEWAL HAS THE SAME BEARING BUT A DISTANCE OF 136 3 FEET.); (HOUSE ON LINE TO THIS BEARING TREE NOW PRECLUDES DIRECT MEASUREMENT.)

THE NEW BEARING TREE FROM RENEWAL # 117 IS FOUND. A 29" W. OAK NOW A 29 INCH D.B.H. WHITE OAK WITH A FULLY HEALED SINGLE BLAZE BEARS N 72° E, 59 3 FEET DISTANT (AS PER RECORD).

#158 +

C.S. File No. 62/45-6

RENEWAL

Monument Set (Procedure and Description)

Monument Detail

PLUMB POSITION OF MONUMENT IS PERPETUATED AS FOUND BECAUSE HAND WRITTEN NOTES OF RENEWAL #117 FROM C.S. FILE 49/41 STATE THAT BRASS CAP WAS SET AT THE ORIGINAL RECORD DISTANCES FROM BOTH ORIGINAL BEARING TREES AND AT THE ORIGINAL RECORD BEARING FROM THE ORIGINAL SOUTHWEST BEARING TREE, AND CURRENT MEASUREMENTS INDICATE THE PLUMB POSITION OF THE MONUMENT IS AS DESCRIBED IN THE HAND WRITTEN NOTES OF RENEWAL #117.

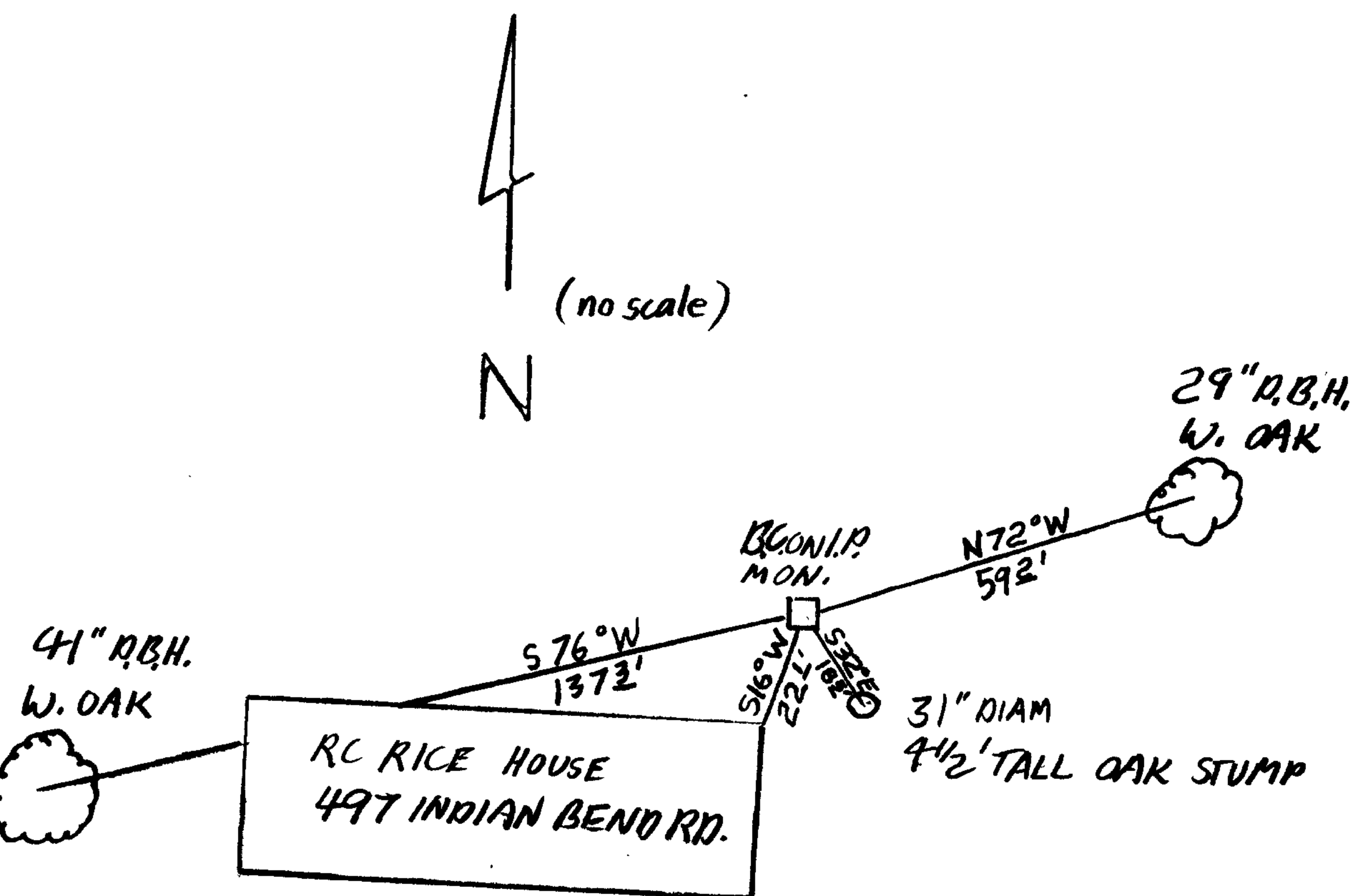
RESET 1987

PLUMB POSITION OF BRASS CAP MONUMENT IS REFERENCED OUT MONUMENT IS REMOVED FROM GROUND, THE STAMPING (AS AT RIGHT) IS ADDED TO THE BRASS CAP MARKINGS. THE MONUMENT IS THEN REESTABLISHED PLUMB AND SET FLUSH WITH GROUND (BECAUSE OF LOCATION IN MOWED LAWN) AT THE ABOVE MENTIONED REFERENCED POSITION.

New Accessories

THE NORTHEAST CORNER OF THE CONCRETE FOUNDATION OF THE R.C. RICE HOUSE AT 497 INDIAN BEND ROAD BEARS S16°W, 22± FEET DISTANT.

Sketch of Monument, Accessories, and General Area



Location & Comments

MONUMENT IS IN LAWN IN BACK YARD OF A PRIVATE RESIDENCE AND IS AT NORTH EDGE OF A BENCH ABOVE UMPQUA RIVER FLOOD PLAIN.

Comp. Declin. 18 1/2° E

Agency DCSD

Party Chief STEPHEN JOHN FLAISE

Notekeeper Stephen John Flaize

Witnesses R.W. SMITH

Address

Surveyor's Seal

REGISTERED PROFESSIONAL LAND SURVEYOR

Larry E. Monrean

OREGON JULY 13, 1979 LARRY E. MONREAN #1830