

GOVERNMENT CORNER RESTORATION FORM

Township 23S Range 4W Sec. 2 County DOUGLAS
State OREGON Date SEPT. 11, 1987 No. _____

Corner Designation

- _____ Condition Report Only
- _____ Not Found
- Renewed
- _____ Unrecorded
- _____ Surveyed In
- _____ Referenced Out

Previous Renewals # 158

MONUMENT DETAIL

Monument(s) Found: (Condition and Source)

A 2 1/2 INCH DIAMETER BRASS CAP, MARKED AS AT RIGHT, ON 1 3/8 INCH O.D. IRON PIPE PROTRUDING 6 INCHES ABOVE 3 FT. X 3 FT X 14 INCH TALL MOUND OF STONE. STONE MOUND IS DISTURBED AND B.C. MONUMENT LEANS APPROXIMATELY 0.3 FEET TO SOUTHWEST. BEARINGS AND DISTANCES ARE MEASURED TO PLUMB POSITION OF B.C. MONUMENT.

T235 R4W WM

S3	S2
S10	S11

1978 OLS 536

MONUMENT LOCATION WAS DETERMINED BY BAUGHMAN SEE CS FILES M 65-71 (ALSO HAINES SURVEY M 22-6)

Accessories Found:

~~A SEARCH~~ ^{dem} A SEARCH IS MADE FOR ORIGINAL BEARING TREES; NO EVIDENCE IS FOUND.

FROM RENEWAL #158 THE TWO BEARING OBJECTS ARE FOUND. A 5/8 INCH DIAMETER IRON ROD PROTRUDING 4 INCHES ABOVE GROUND ON NORTHERLY R/W KLM ROAD NO. 23-4-10.1 BEARS S76°W, 96.5 FEET DISTANT (RECORD ORIGINALLY S76°W, 94.5 FEET CORRECTED TO S79°W, 96.5 FEET) AND A 1/2 INCH DIAMETER IRON ROD PROTRUDING 6 INCHES ABOVE GROUND WITH TOP BENT OVER TO SOUTHWEST (BEARING AND DISTANCE CHECKED TO PLUMB POSITION) BEARS S85 1/2°E, 218.6 FEET DISTANT (RECORD S86°45'E, 218.6 FEET).

AT REQUEST OF RANCHER WE REFERENCE OUT POSITION OF FOUND 1/2 INCH DIAMETER IRON ROD, REMOVE FROM GROUND, STRAIGHTEN, AND THEN RESET AT REFERENCED POSITION 14 INCHES BELOW GROUND SURFACE TO PROTECT I.R. DURING FIELD DISKING.

#179 ✓

RENEWAL

Monument Set (Procedure and Description)

Monument Detail

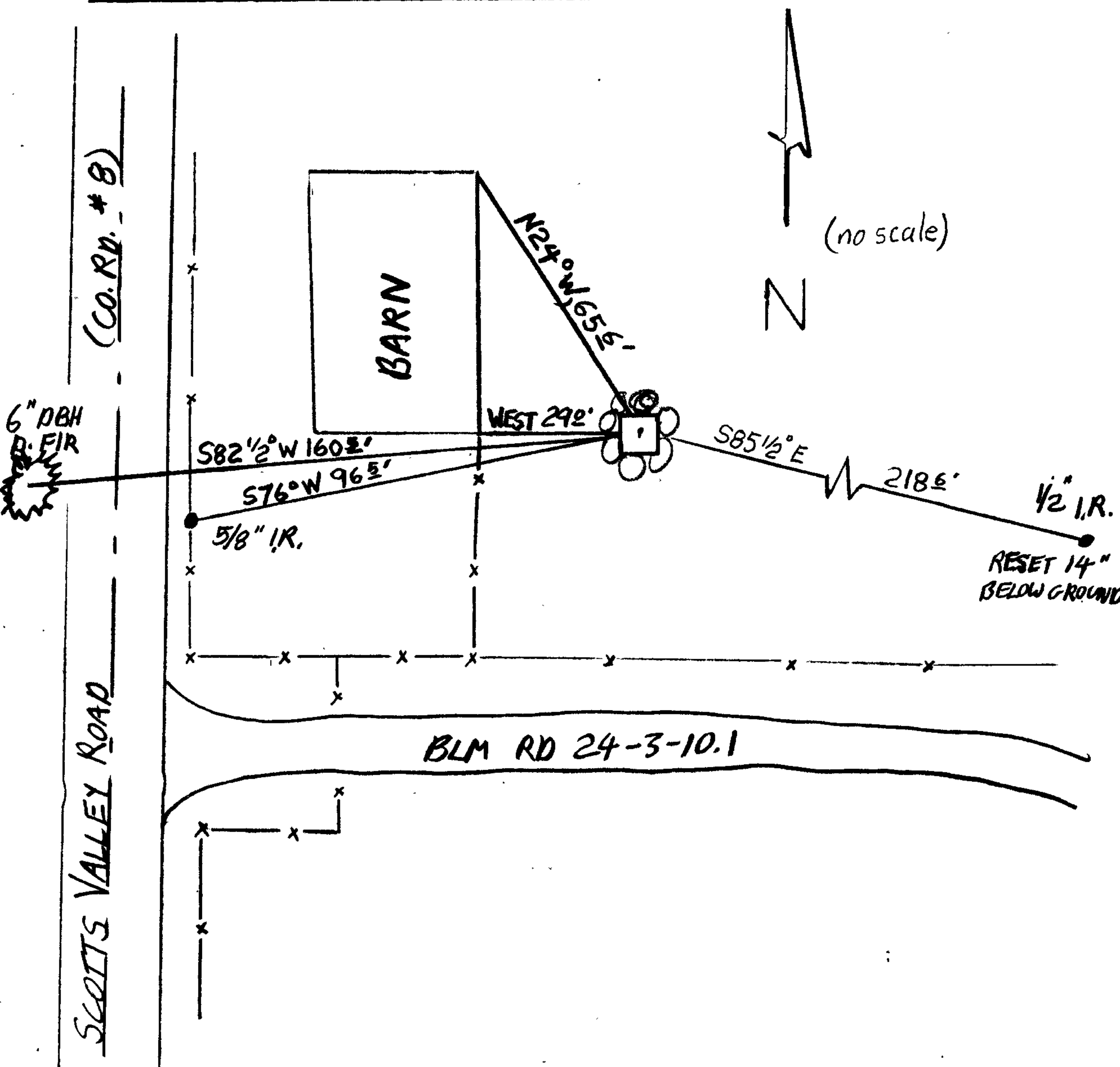
BRASS CAP MONUMENT IS REPLUMBED AND MOUND OF STONES IS RESTACKED TO NOW MEASURE 3x3x1 1/2 FEET TALL. MONUMENT NOW PROTRUDES APPROXIMATELY 2 INCHES FROM MOUND OF STONE.

New Accessories

A 6 INCH D.B.H. DOUGLAS FIR SCRIBED T24S R3W S10 CS BT ON A DOUBLE BLAZE BEARS S82 1/2 W, 160.5 FEET DISTANT.

THE SOUTHEAST CORNER OF A BARN BEARS WEST, 29.0 FEET DISTANT. THE NORTHEAST CORNER OF ABOVE SAID BARN BEARS N24 W, 65.6 FEET DISTANT.

Sketch of Monument, Accessories, and General Area



Location & Comments

MONUMENT IS IN OPEN PASTURE WITH BARN, ROAD AND TREE FARM TO WEST; NO NEAR TREES OR SUITABLE BEARING OBJECTS TO NORTH, SOUTH OR EAST.

Comp. Declin. 18 1/2 E
Agency DCSO
Party Chief STEPHEN JOHN FLAUSE
Notekeeper RANDALL W SMITH
Witnesses Stephen John Flause

Address

Surveyor's Seal

REGISTERED PROFESSIONAL LAND SURVEYOR

Larry E. Monrean

OREGON
JULY 13, 1979
LARRY E. MONREAN
#1830