

RENEWAL

Monument Set (Procedure and Description)

1" (1 1/4" O.D.) X 32" PIPE WITH A 2 1/2" BRASS CAP.
PROTRUDES 4" ABOVE GROUND. CAP MARKED
AS AT RIGHT

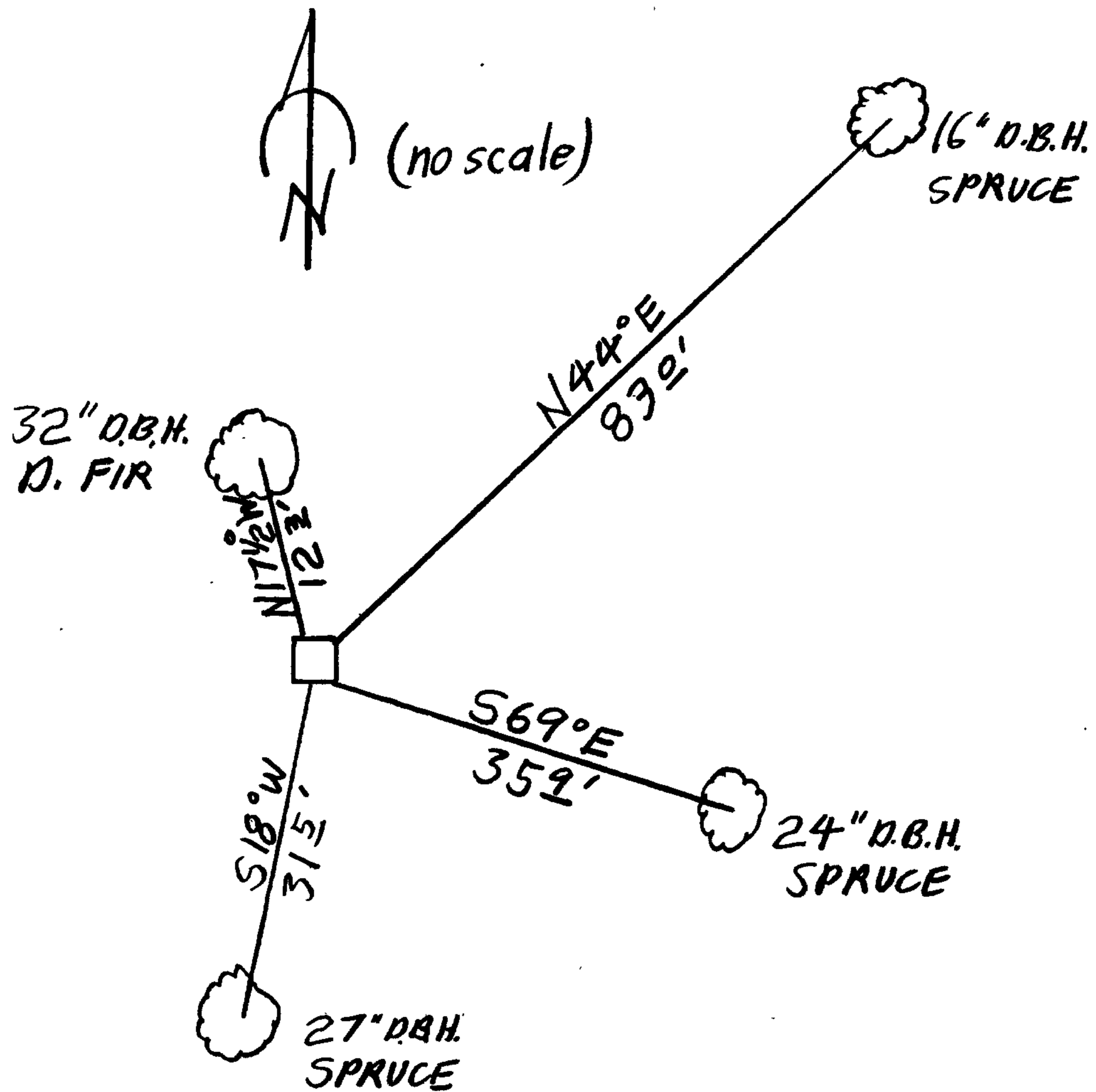
Monument Detail

DOUGLAS COUNTY SURVEYORS
T22S
R12W
S17
C-N 1/16
1986
OFFICE

New Accessories

27" SPRUCE DOUBLE BLAZED SCRIBED "CN 1/16 S17 CS BT" BEARS S18°W, 31.5 FT
32" D. FIR DOUBLE BLAZED SCRIBED "CN 1/16 S17 CS BT" BEARS N17 1/2°W, 12.2 FT
24" SPRUCE DOUBLE BLAZED SCRIBED "CN 1/16 S17 CS BT" BEARS S69°E, 35.9 FT
16" SPRUCE DOUBLE BLAZED SCRIBED "CN 1/16 S17 CS BT" BEARS N44°E, 83.0 FT

Sketch of Monument, Accessories, and General Area



Location & Comments

CORNER LIES AT THE
EAST EDGE OF A
NORTH-SOUTH CREEK BOTTOM
Comp. Declin. 18 1/2° E
Agency DCSO
Party Chief JANET R. LUNDEEN
Notekeeper RANDALL W. SMITH
Witnesses STEPHEN J. FLAUSE

Address Room 205 Justice Hall
Roseburg, OR 97470

REGISTERED SURVEYOR'S SEAL
PROFESSIONAL
LAND SURVEYOR

Janet R. Lundeen
OREGON
FEBRUARY 4, 1983
JANET R. LUNDEEN