

GOVERNMENT CORNER RESTORATION FORM

Township 22S Range 12W Sec. 17 County DOUGLAS
State OREGON Date 9-22-86 No. _____

Corner Designation

N 1/16
S18 | S17

- Condition Report Only
- Not Found
- Renewed
- Unrecorded
- Surveyed In
- Referenced Out

Previous Renewals NONE

Monument(s) Found: (Condition and Source)

N/A

Accessories Found:

N/A

MONUMENT DETAIL

#2154

C.S. File No. 62/13-M

RENEWAL

Monument Set (Procedure and Description)

Monument Detail

MONUMENT SET IS A 2 3/8 INCH DIAMETER BRASS CAP MARKED AS AT RIGHT ON A 1 INCH DIAMETER (1 1/4 INCH O.D.) X 32 INCH LONG GALVANIZED IRON PIPE. MONUMENT IS FIRMLY SET AND PROTRUDES APPROXIMATELY 4 INCHES ABOVE GROUND.

DOUGLAS COUNTY SURVEYORS

T225

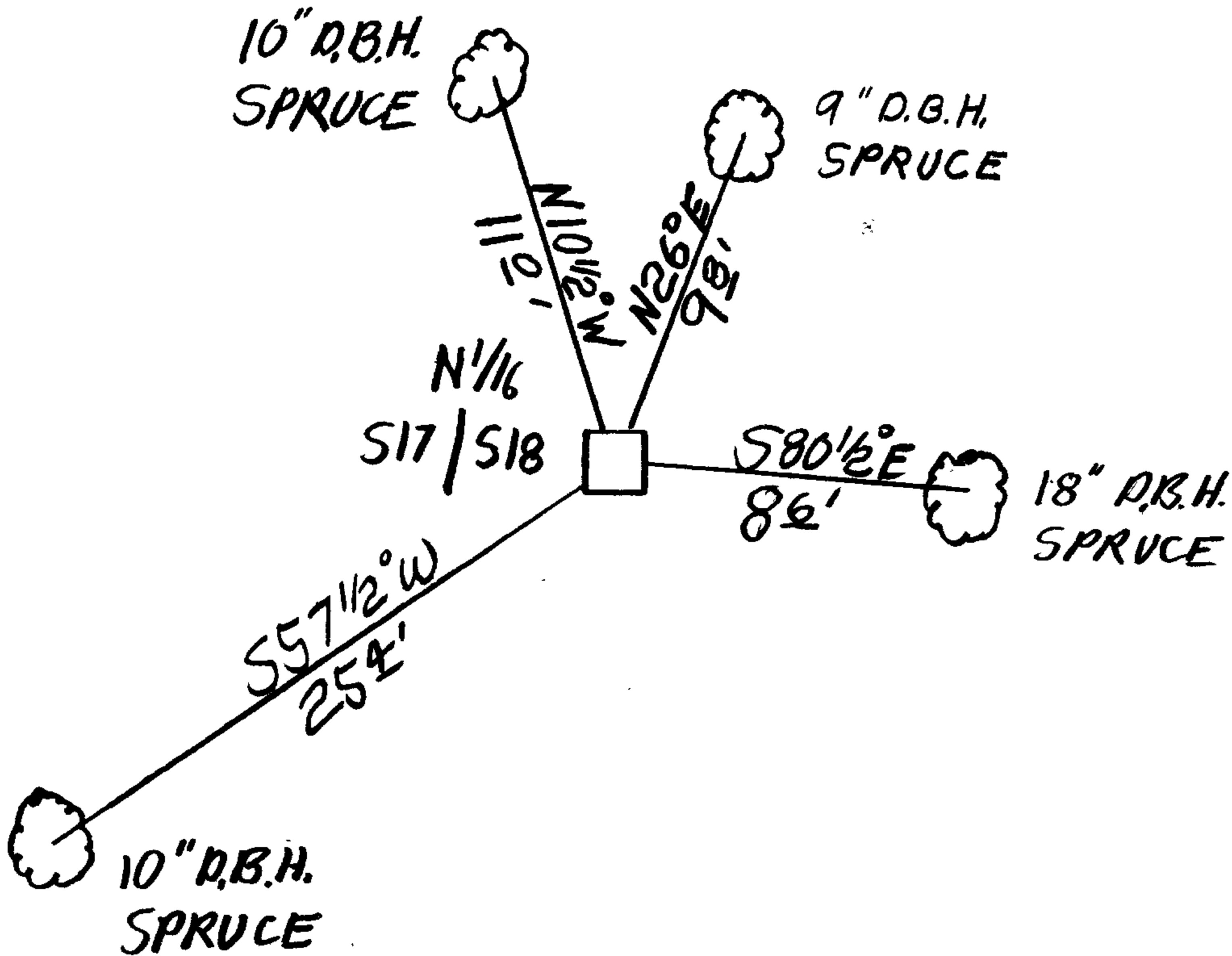
N 1/16
S18 | S17
R12W
1986
OFFICE

New Accessories

- A 10 INCH D.B.H. SPRUCE SCRIBED 1/16 S18 CS BT ON A DOUBLE BLAZE, BEARS N 10 1/2 W, 11 FEET.
A 10 INCH D.B.H. SPRUCE SCRIBED 1/16 S18 CS BT ON A DOUBLE BLAZE, BEARS S 57 1/2 W, 25 FEET.
AN 18 INCH D.B.H. SPRUCE SCRIBED 1/16 S17 CS BT ON A DOUBLE BLAZE, BEARS S 80 1/2 E, 8 FEET (7 FEET TO BLAZE)
A 9 INCH D.B.H. SPRUCE SCRIBED 1/16 S17 CS BT ON A DOUBLE BLAZE, BEARS N 26 E, 9 FEET.

Sketch of Monument, Accessories, and General Area

Location & Comments



MONUMENT LIES HALFWAY DOWN MODERATE SLOPE TO NORTHWEST.

Comp. Declin. 18 1/2 E
Agency DCSD
Party Chief J.R. LUNDEEN
Notekeeper J.R. LUNDEEN
Witnesses R.W. SMITH
Stephen John Plause

Address Room 205 Justice Hall
Roseburg, OR 97470

