

RENEWAL

Monument Set (Procedure and Description)

Monument Detail

MONUMENT SET IS A 2 3/8 INCH DIAMETER BRASS CAP MARKED AS AT RIGHT, ON A 1 INCH DIAMETER (1 1/4 INCH O. D.) x 32 INCH LONG GALVANIZED IRON PIPE PROTRUDING 8 INCHES ABOVE GROUND AND SURROUNDED BY A 2 FOOT DIAMETER MOUND OF STONE.

DOUGLAS COUNTY SURVEYORS

T22S
R12W

1/4 S18 | S17

1986

New Accessories

A 6 INCH D.B.H. SPRUCE SCRIBED 1/4 S17 CSBT ON A DOUBLE BLAZE, BEARS N75 1/4° E, 44 2' FEET.

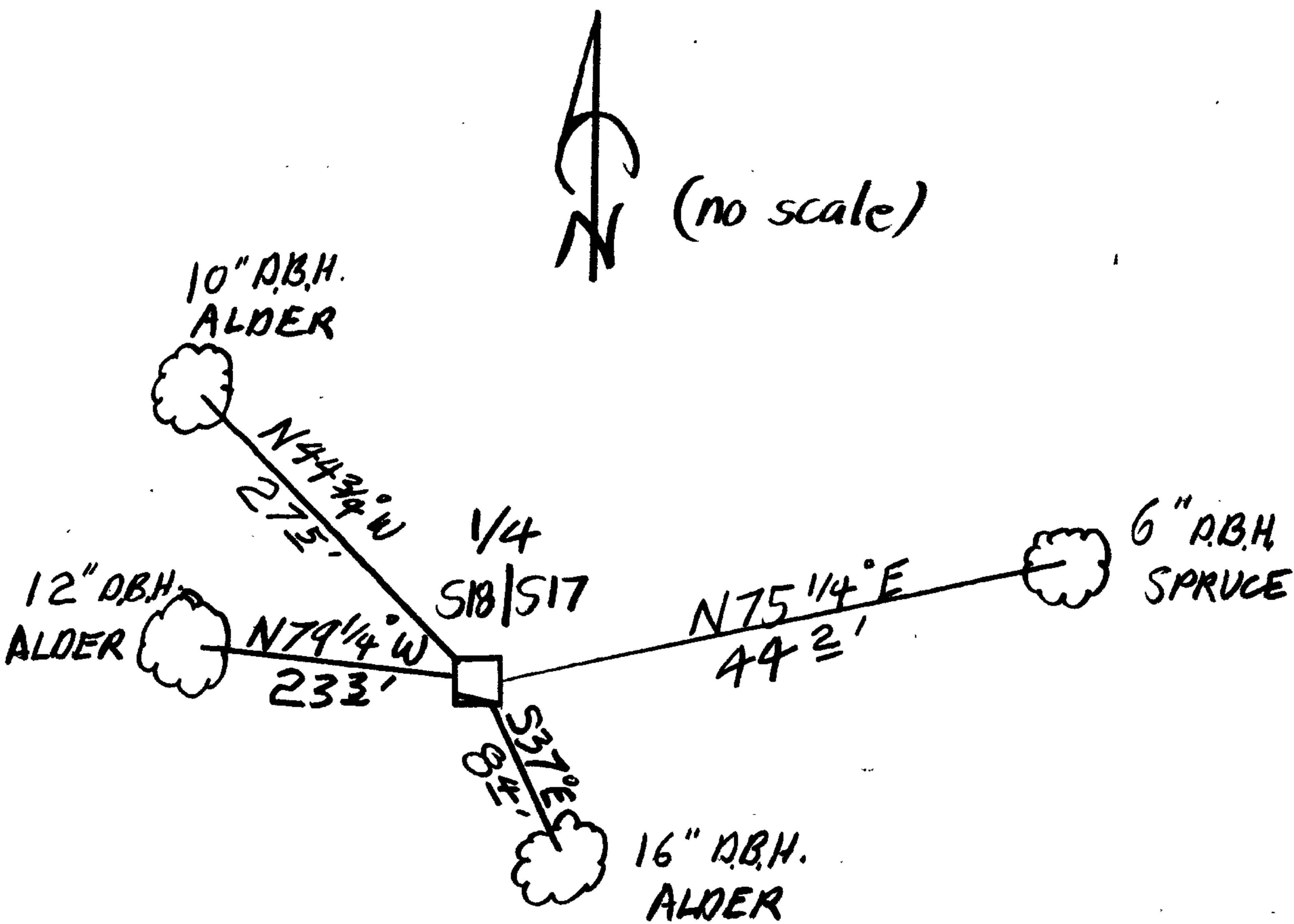
A 16 INCH D.B.H. ALDER BARK SCRIBED 1/4 S17 CSBT, BEARS S37° E, 8 1/2' FEET.

A 12 INCH D.B.H. ALDER BARK SCRIBED 1/4 S18 CSBT, BEARS N79 1/4° W, 233' FEET.

A 10 INCH D.B.H. ALDER BARK SCRIBED 1/4 S18 CSBT, BEARS N44 3/4° W, 275' FEET.

Sketch of Monument, Accessories, and General Area

Location & Comments



Comp. Declin. 18 1/2° E

Agency DC SO

Party Chief J.R. LUNDEEN

Notekeeper J.R. LUNDEEN

Witnesses R.W. SMITH

Stephen John Plaus

Address Room 205 Justice Hall
Roseburg, OR 97470

Surveyor's Seal
 REGISTERED
 PROFESSIONAL
 LAND SURVEYOR

Janet R. Lundeen

CREATED
 FEBRUARY 4, 1983
 JANET R. LUNDEEN