

RENEWAL

Monument Set (Procedure and Description)

Monument Detail

DOUGLAS COUNTY SURVEYORS

T 22 S
R 12 W

S 1/16
518 | 517

1986

OFFICE

MONUMENT IS A 2 3/8 INCH DIAMETER BRASS CAP MARKED AS AT RIGHT, ON A 1 INCH DIAMETER (1 1/4 INCH O.D.) X 32 INCH LONG GALVANIZED IRON PIPE FIRMLY SET AND PROTRUDING 6 INCHES FROM GROUND.

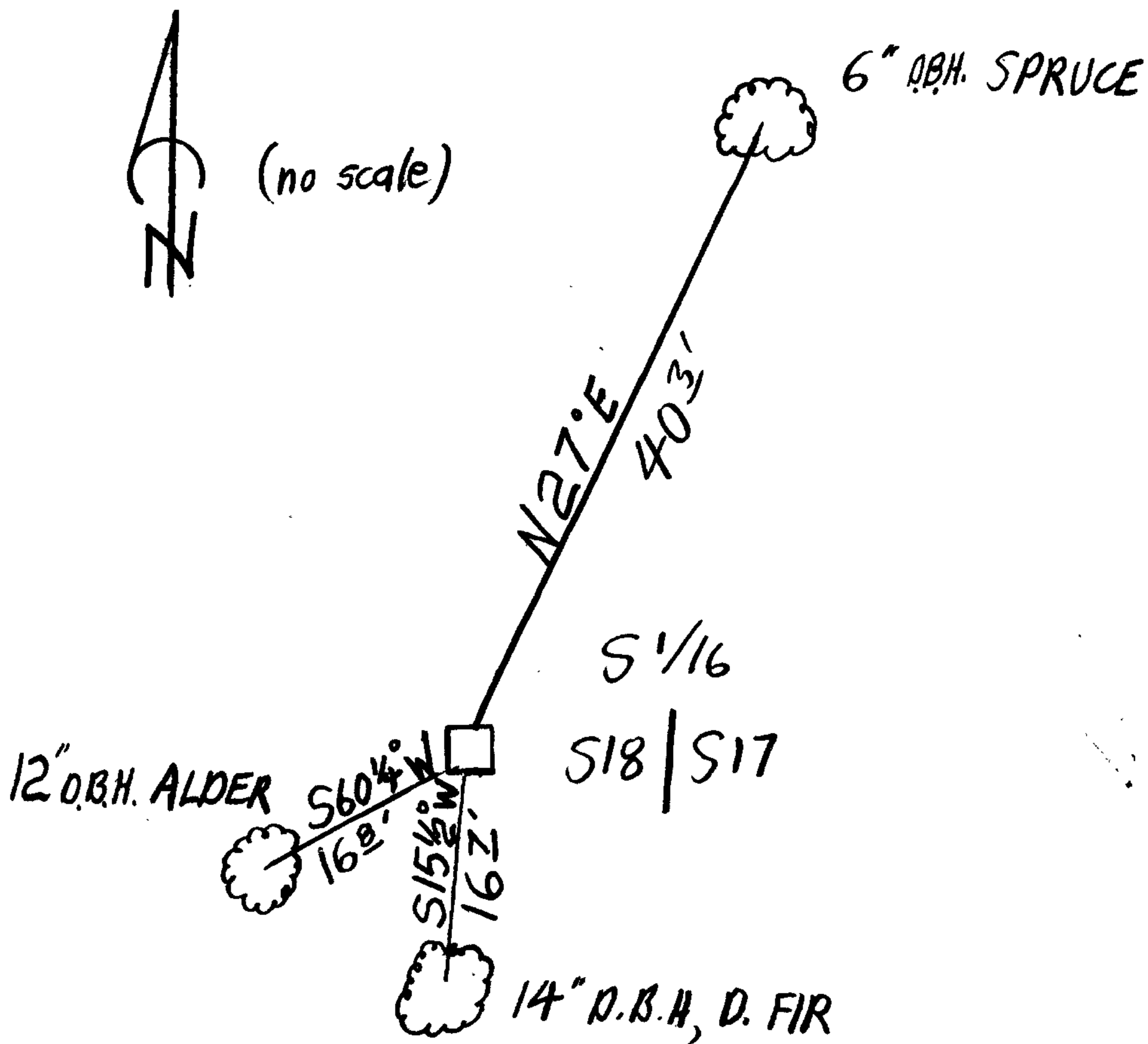
New Accessories

6" DIA SPRUCE DOUBLE BLAZED AND SCRIBED "S 1/16 517 CS BT" BEARS N 27° E, 40.3 FEET.

12" DIA. ALDER DOUBLE BLAZED AND SCRIBED "S 1/16 518 CS BT" BEARS S 60 1/4° W, 16.8 FEET.

14" DIA. D. FIR DOUBLE BLAZED AND SCRIBED "S 1/16 518 CS BT" BEARS S 15 1/2° W, 16.7 FEET.

Sketch of Monument, Accessories, and General Area



Location & Comments

MONUMENT LOCATED APPROXIMATELY 100 FEET NORTH OF AND 20 FEET LOWER THAN CREST OF RIDGE RUNNING EAST AND WEST.

Comp. Declin. 18 1/2° E
Agency D.C.S.O.
Party Chief J. R. LUNDEEN
Notekeeper
Witnesses R. W. SMITH

Address Room 205 JUSTICE HALL
ROSEBURG, OR 97470

REGISTERED'S SEAL
PROFESSIONAL
LAND SURVEYOR

Janet R. Lundeen
OREGON
FEBRUARY 4, 1986
JANET R. LUNDEEN
2032