

GOVERNMENT CORNER RESTORATION FORM

Township 22S Range 12W Sec. 17 County DOUGLAS

State OR Date 5/12/86 No. \_\_\_\_\_

Corner Designation

18	17
19	20

- Condition Report Only
- Not Found
- Renewed
- Unrecorded
- Surveyed In
- Referenced Out

Previous Renewals NONE

Monument(s) Found: (Condition and Source)

NONE

MONUMENT DETAIL

Accessories Found:

- 48" SPRUCE, NOW 58" STUMP 7 FT HIGH WITH SCRIBING "S 2" BEARS S11°W, 101.6 FT (ALSO RECORD)
- 24" HEMLOCK, NOW A
- 36" BADLY ROTTED STUMP, 2 FT. HIGH BEARS N 23 1/2° E, 39.6 FT (ALSO RECORD) (REC N19°E, 39.6 FT)
- NO TRACE OF 24" ALDER AT S60°E, 6.6 FT.
- DEPRESSION AT N59°W, 17.2 FT. POSSIBLE STUMPHOLE OF ORIG. NW ALDER.

#209 X

RENEWAL

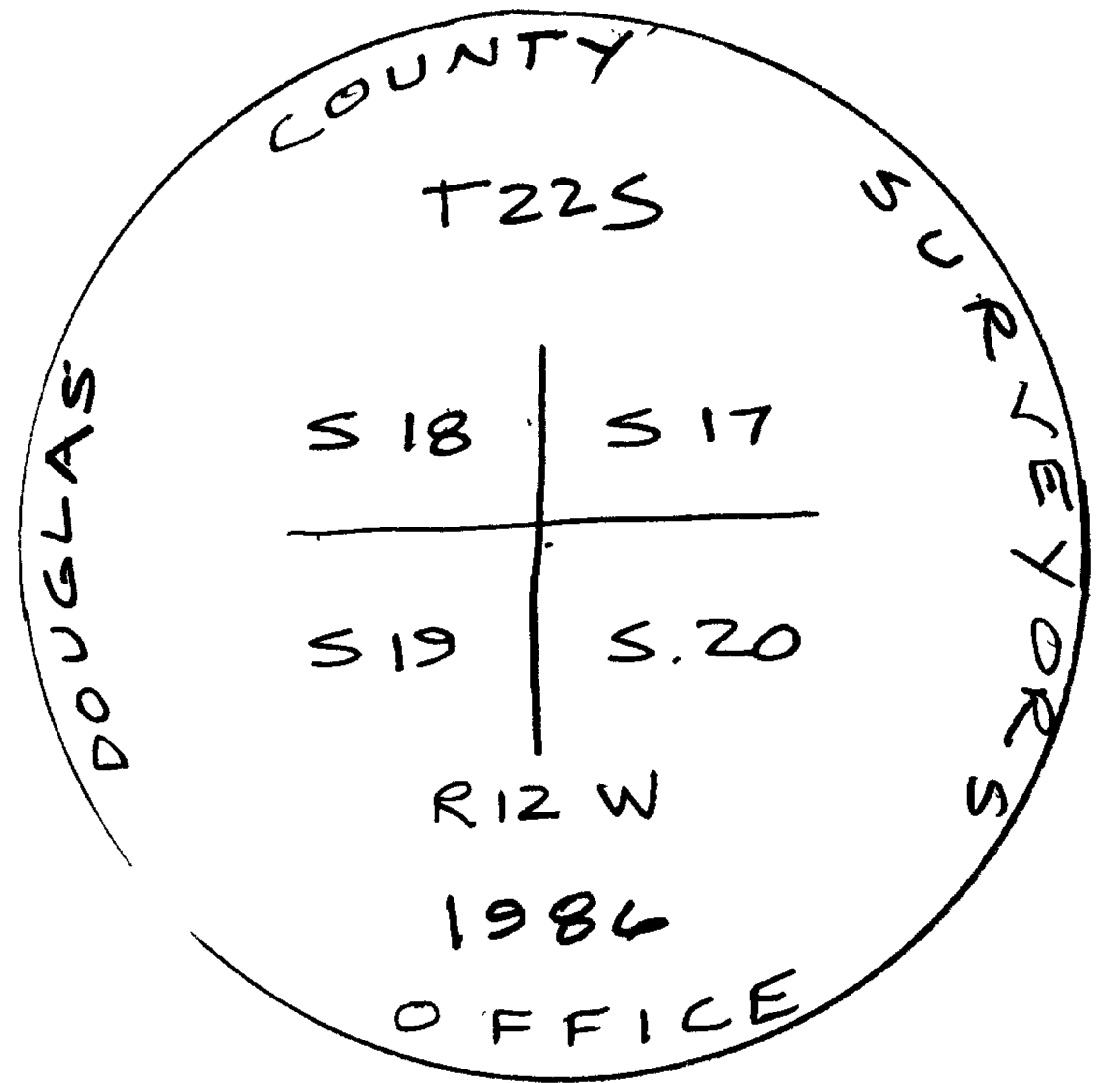
Monument Set (Procedure and Description)

CORNER SET AT RECORD BEARING & DISTANCE FROM THE 58" SPRUCE STUMP.

THIS POSITION AGREED WITH RECORD BEARING AND DISTANCE TO THE 36" BADLY ROTTED STUMP WHOSE CENTER COULD NOT EASILY BE DETERMINED.

SET 2 1/2" BC ON 1 3/8" O.D. X 32" PIPE

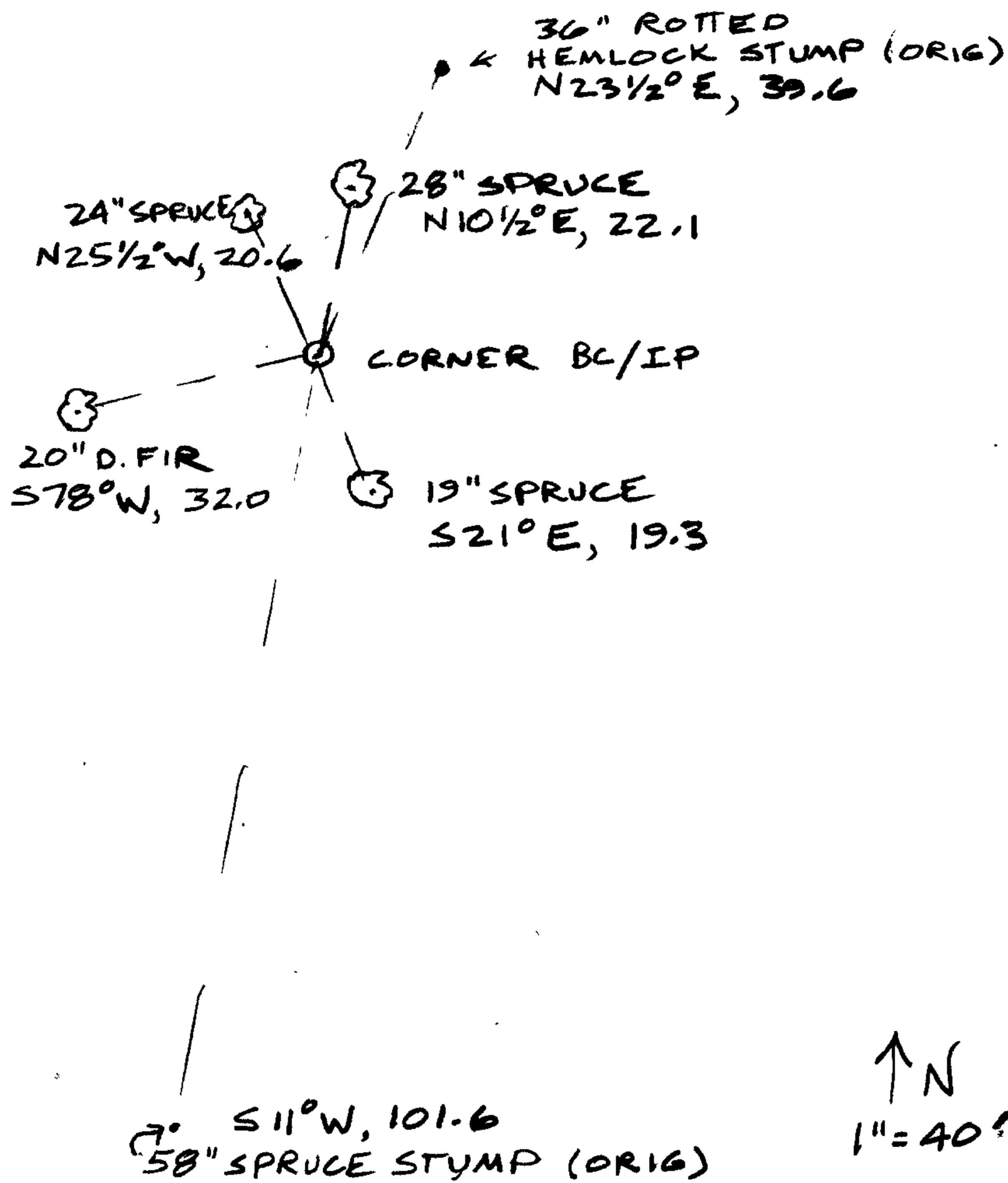
Monument Detail



New Accessories

- 19" SPRUCE, DOUBLE BLAZED & SCRIBED "T22S R12W S20 CS BT" BEARS S21°E, 19.3 FT.
- 24" SPRUCE, DOUBLE BLAZED & SCRIBED "T22S R12W S.18 CS BT" BEARS N25 1/2°W, 20.6 FT.
- 20" D. FIR, DOUBLE BLAZED & SCRIBED "T22S R12W S.19 CS BT" BEARS S78°W, 32.0 FT.
- 28" SPRUCE, DOUBLE BLAZED & SCRIBED "T22S R12W S.17 CS BT" BEARS N10 1/2°E, 22.1 FT.

Sketch of Monument, Accessories, and General Area



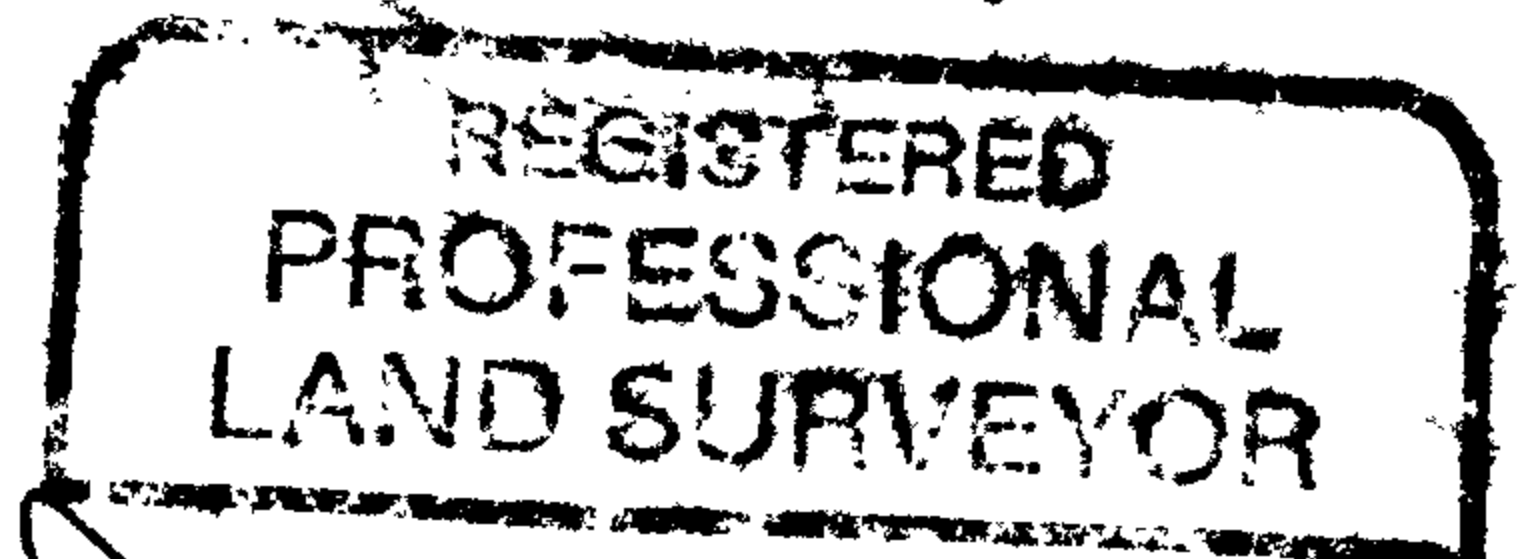
Location & Comments

\_\_\_\_\_  
 \_\_\_\_\_  
 \_\_\_\_\_  
 \_\_\_\_\_  
 \_\_\_\_\_  
 \_\_\_\_\_

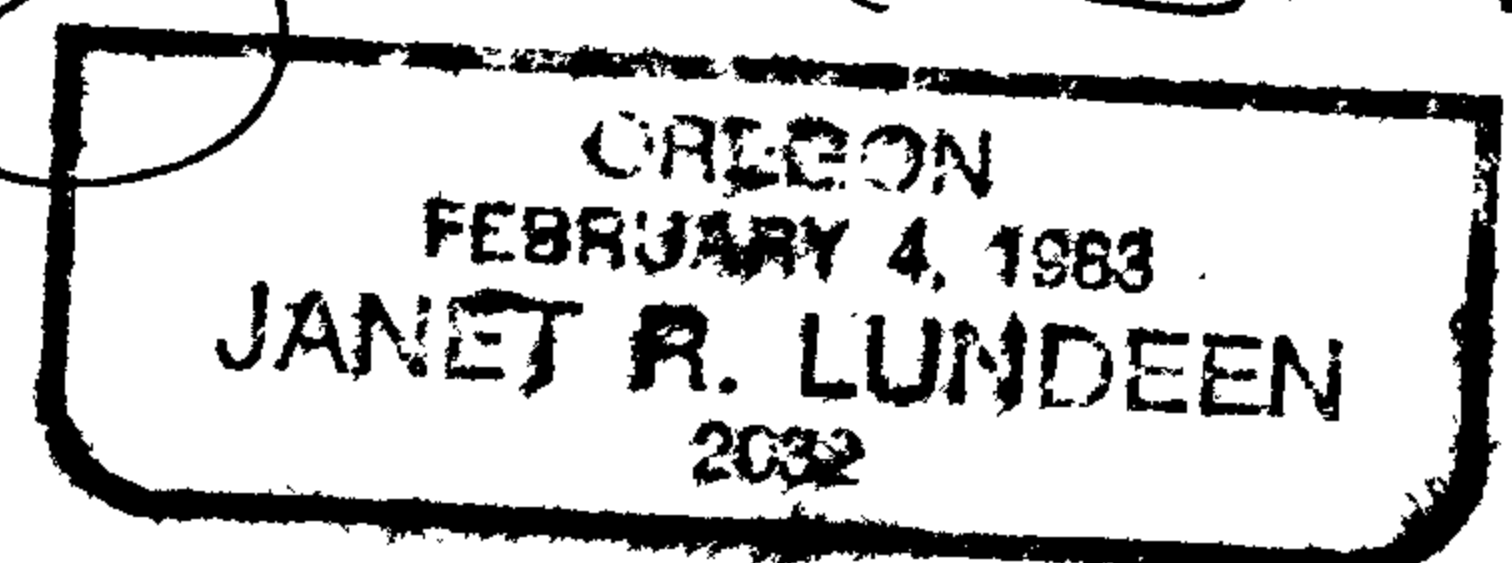
Comp. Declin. 18 1/2°E  
 Agency DOUGLAS CO. SURVEYOR  
 Party Chief J. LUNDEEN  
 Notekeeper J. LUNDEEN & R. SMITH  
 Witnesses R. SMITH  
S. FLAUSE

Address ROOM 205 JUSTICE HALL  
ROSEBURG, OR 97470

Surveyor's Seal



*Janet R. Lundeen*



*dfm*