



RENEWAL

Monument Set (Procedure and Description)

SET AT RECORD BEARING & DISTANCE  
 FROM ORIG. 40" CEDAR A 2 3/8" BRASS  
 CAP ON A 1 1/4" (I.D.) X 32" IRON PIPE  
 STAMPED AS SHOWN →.

CAP PROTRUDES 9" FROM GROUND,  
 MOUND OF STONES AROUND CAP.

Monument Detail

DOUGLAS COUNTY SURVEYOR  
 T22S  
 1/4 S17  
 S20  
 R12W  
 1986  
 OFFICE

New Accessories

MEAS. TO CENTER ROOT WAP

15" SPRUCE BEARS N84 1/4° W 16.4 FT DOUBLE BLAZED & SCRIBED  
 " 1/4 S17 CS BT"

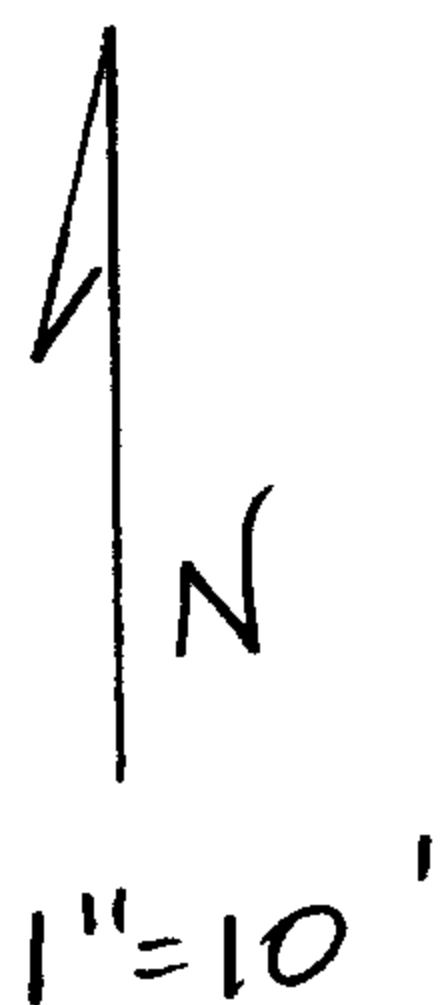
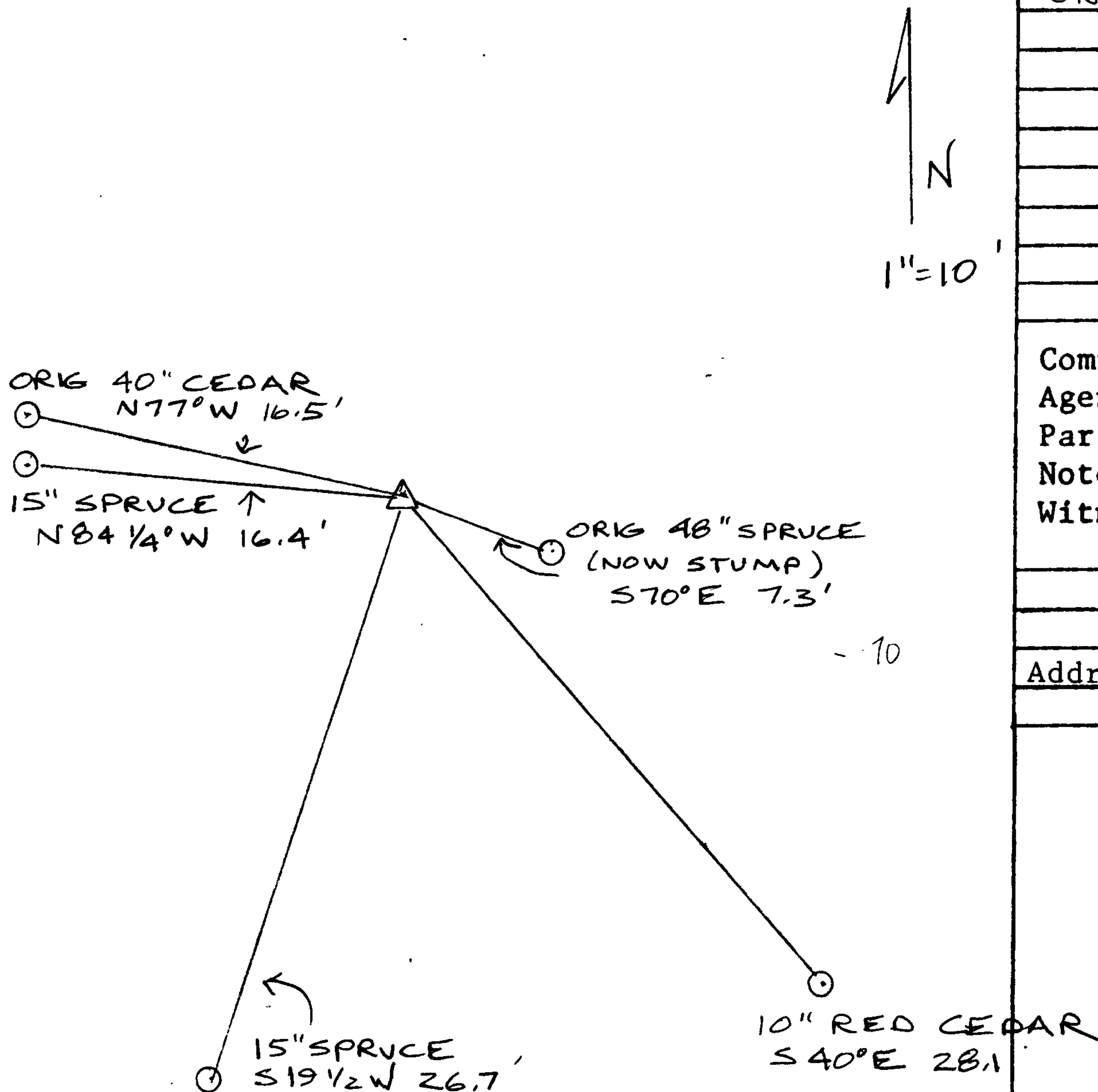
15" SPRUCE BEARS S19 1/2° W 26.7 FT DOUBLE BLAZED & SCRIBED  
 " 1/4 S20 CS BT"  
 (PISTOL BUTED)

10" RED CEDAR BEARS S40° E 28.1 FT, DOUBLE BLAZED & SCRIBED  
 " 1/4 S20 CS BT"

Sketch of Monument, Accessories, and General Area

Location & Comments

ON SOUTH SIDE OF CREEK



Comp. Declin. 18 1/2 E  
 Agency DUSO  
 Party Chief J. Lundeen  
 Notekeeper "  
 Witnesses RW SMITH  
 SJ FLAUSE

Address ROOM 205 JUSTICE HALL  
 ROSEBURG OR 97470

REGISTERED'S Seal  
 PROFESSIONAL  
 LAND SURVEYOR

*Janet R. Lundeen*

OREGON  
 FEBRUARY 4, 1983  
 JANET R. LUNDEEN  
 2032