

DOUGLAS COUNTY SURVEYOR'S OFFICE

ROOM 205 - JUSTICE BUILDING
ROSEBURG, OREGON 97470
PHONE 440-4272

FRITZ INGRAM
COUNTY SURVEYOR

Additional procedure explanation for the corner renewal dated 4/29/86
at the SE cor S.17, T22S, R12W

The features called for in the original notes were tied - the ridges to the north, east, and west of the corner and the creek (canyon) south of the corner. From this information we determined a position that fit the original calls well. We surveyed into this position and spent several days searching for evidence. Only two large stump were found to be close to the original relationship.

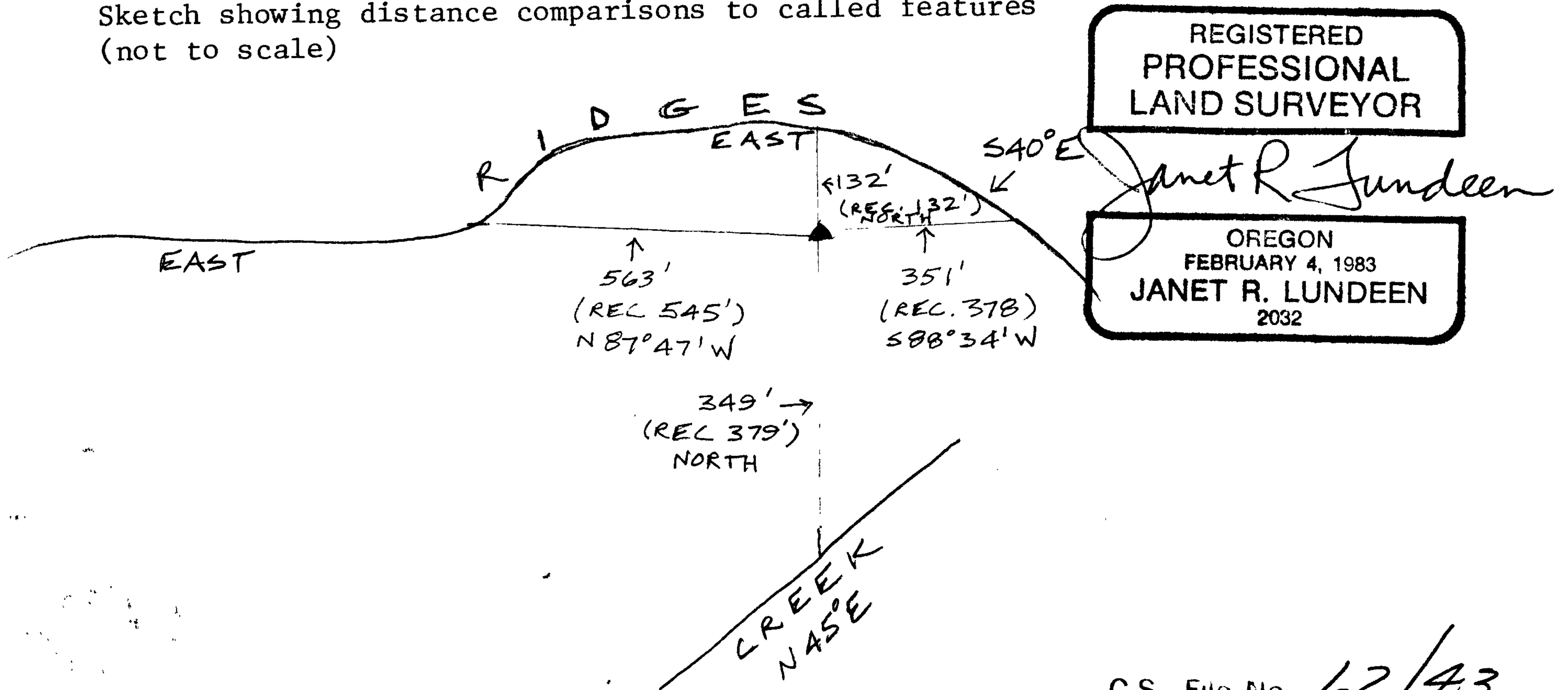
From rough stump ties we find S 1°30'W 33.5 ft between them.

If record distances were to center, the relationship would be S 1°45'W 29.6 ft.

If record distances were to faces, then the record relationship would be S 2° W 32.2 ft.

We first intersected record distances and obtained a position that did not agree well with the record bearings. However, upon intersecting record distances altered to reflect an original face measurement, we have a position that agrees with record bearings. We then set the monument as described on the form.

Sketch showing distance comparisons to called features
(not to scale)



(GRID)
TRUE

FILE

E/4 ↑N

branch 31ks wide

Δ = 450'
ASCENT

396
(220)

SE S.17 ↑N

- TOP OF RIDGE

TOP OF RISE

N 07° 47' W
545'

Δ = -60'

(N 85° 17' W)

132'
NORTH (S 73° 30' W)
380'

Δ = -50' ↓
S 88° 34' W
378'

Δ = -80'

(N 88° 56' W)

TOP OF RIDGE

Δ = -120' ↓

CANYON

(ALL DESCENTS)

NORTH

462'

Δ = +50'

(430)

top of spur