

RENEWAL

Monument Set (Procedure and Description)

AS THE LOCATION OF THE FALLEN HEMLOCK WAS OBVIOUS, WE DETERMINED A POSITION BY INTERSECTING DISTANCES. THIS POSITION AGREED WITH RECORD BEARINGS.

SET 2 3/8" BC ON 1" (1 3/8" O.D.) X 32" PIPE

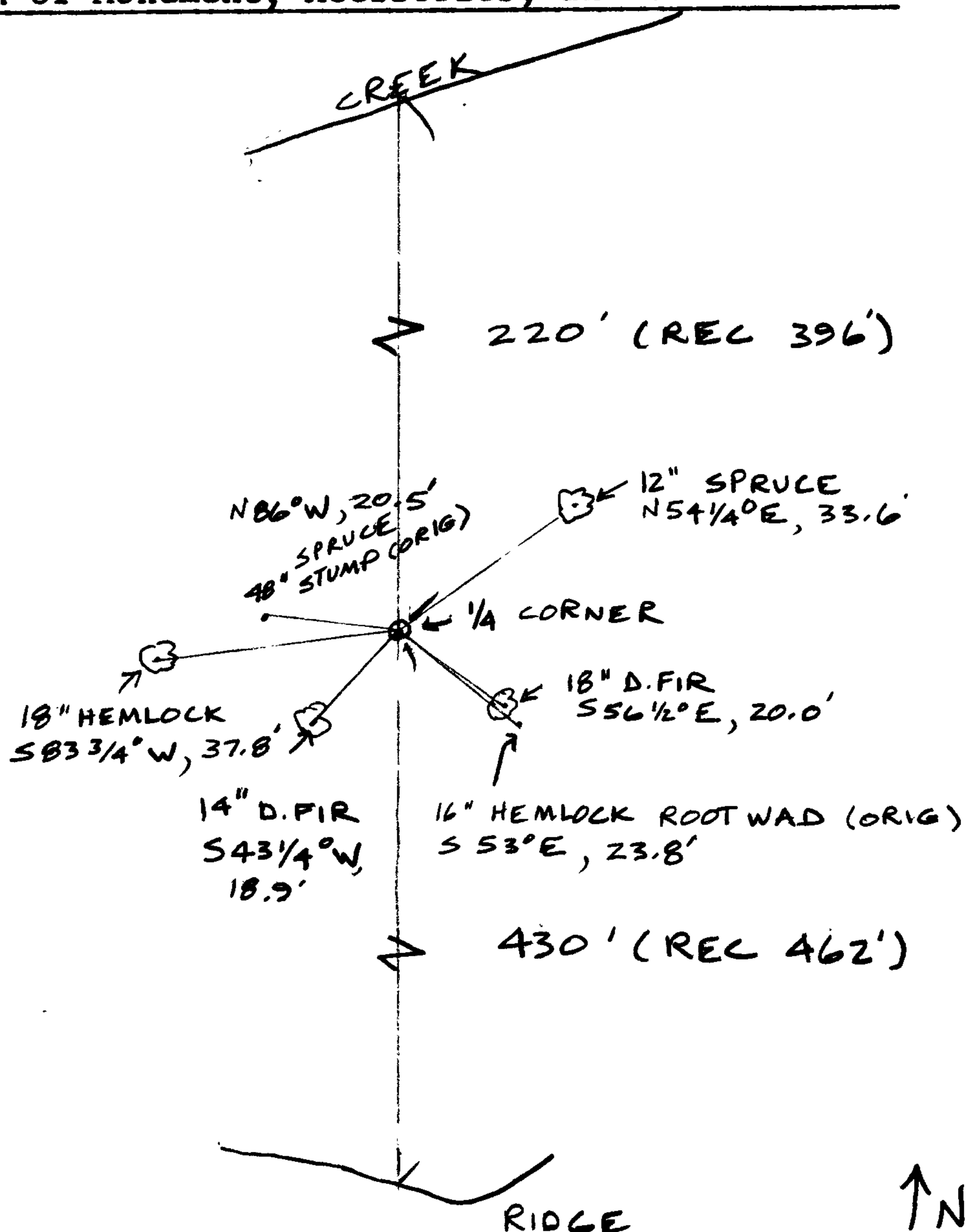
Monument Detail

SEE FRONT

New Accessories

- 12" SPRUCE BEARS N 54 1/4° E, 33.6 FT, SCRIBED "1/4 S 16 CS BT" IN DOUBLE BLAZE
- 18" D. FIR BEARS S 56 1/2° E, 20.0 FT, SCRIBED "1/4 S 16 CS BT" IN DOUBLE BLAZE
- 14" D. FIR BEARS S 43 1/4° W, 18.9 FT, SCRIBED "1/4 S 17 CS BT" IN DOUBLE BLAZE
- 18" HEMLOCK BEARS S 83 3/4° W, 37.8 FT, SCRIBED "1/4 S 17 CS BT" IN DOUBLE BLAZE

Sketch of Monument, Accessories, and General Area



Location & Comments

NOTE: ORIGINAL LINE NOTES TOPOG CALL TO SOUTH FIT WELL, BUT THE CALL TO THE NORTH MISSES BY 180' ±

Comp. Declin. 18 1/2° E
 Agency DOUGLAS CO. SURVEYOR
 Party Chief J. LUNDEEN
 Notekeeper J. LUNDEEN
 Witnesses R. SMITH
S. FLAUSE

Address: ROOM 205 JUSTICE HALL
ROSEBURG, OR 97470

Surveyor's Seal

REGISTERED
PROFESSIONAL
LAND SURVEYOR

Janet R Lundeen

OREGON
FEBRUARY 4, 1983
JANET R. LUNDEEN
2032

↑ N
1" = 40'

ok/m