

GOVERNMENT CORNER RESTORATION FORM

Township 26S Range 1W Sec. 6 County DOUGLAS  
State OREGON Date 4/19/87 No. \_\_\_\_\_

Corner Designation (1910 ORIGINAL, MENSCH)

S12 | 56 CC  
      | 57

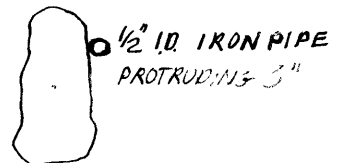
- \_\_\_\_\_ Condition Report Only
- \_\_\_\_\_ Not Found
- Renewed
- \_\_\_\_\_ Unrecorded
- \_\_\_\_\_ Surveyed In
- \_\_\_\_\_ Referenced Out

Previous Renewals 1910 RETRACEMENT, 1967 DEPENDENT RESURVEY & M47-7  
Monument(s) Found: (Condition and Source)

MONUMENT DETAIL

FROM THE 1910 MENSCH RETRACEMENT AN ORIGINAL 16"x12"x12" INCH BASALT STONE (NOW MEASURING 7 INCHES x 12 INCHES x 2 INCHES HIGH ON PORTION PROTRUDING FROM GROUND, BECAUSE OF SEVERE FROST CRACKING WE DO NOT REMOVE STONE TO EXAMINE FURTHER.

MEASURABLE PORTION OF STONE PROTRUDING IS 7"x12"x2" HIGH



FROM GARRETT SURVEY M47-7 ON THE EAST EDGE OF ABOVE STONE IS A 1/2" I.D. IRON PIPE PROTRUDING 3 INCHES ABOVE GROUND.

(BEARINGS AND DISTANCES MEASURED FROM 1/2 INCH I.D. IRON PIPE.)

Accessories Found:

FROM 1910 RETRACEMENT ONE BEARING TREE FOUND A MADRONE, 6 INS. DIAM NOW A 9 INCH D.B.H. MADRONE BEAR S25°E, 18<sup>3</sup> FEET DISTANT AS PER RECORD. NO EVIDENCE FOUND OF SCRIBING IN PREVIOUSLY OPENED PLATE. NO EVIDENCE OF NORTHEAST CHINQUAPIN BEARING TREE FOUND.

X

#138 T 26-24  
#114-726-1

Sub. File No. 62/40-17 C

RENEWAL

Monument Set (Procedure and Description)

Monument Detail

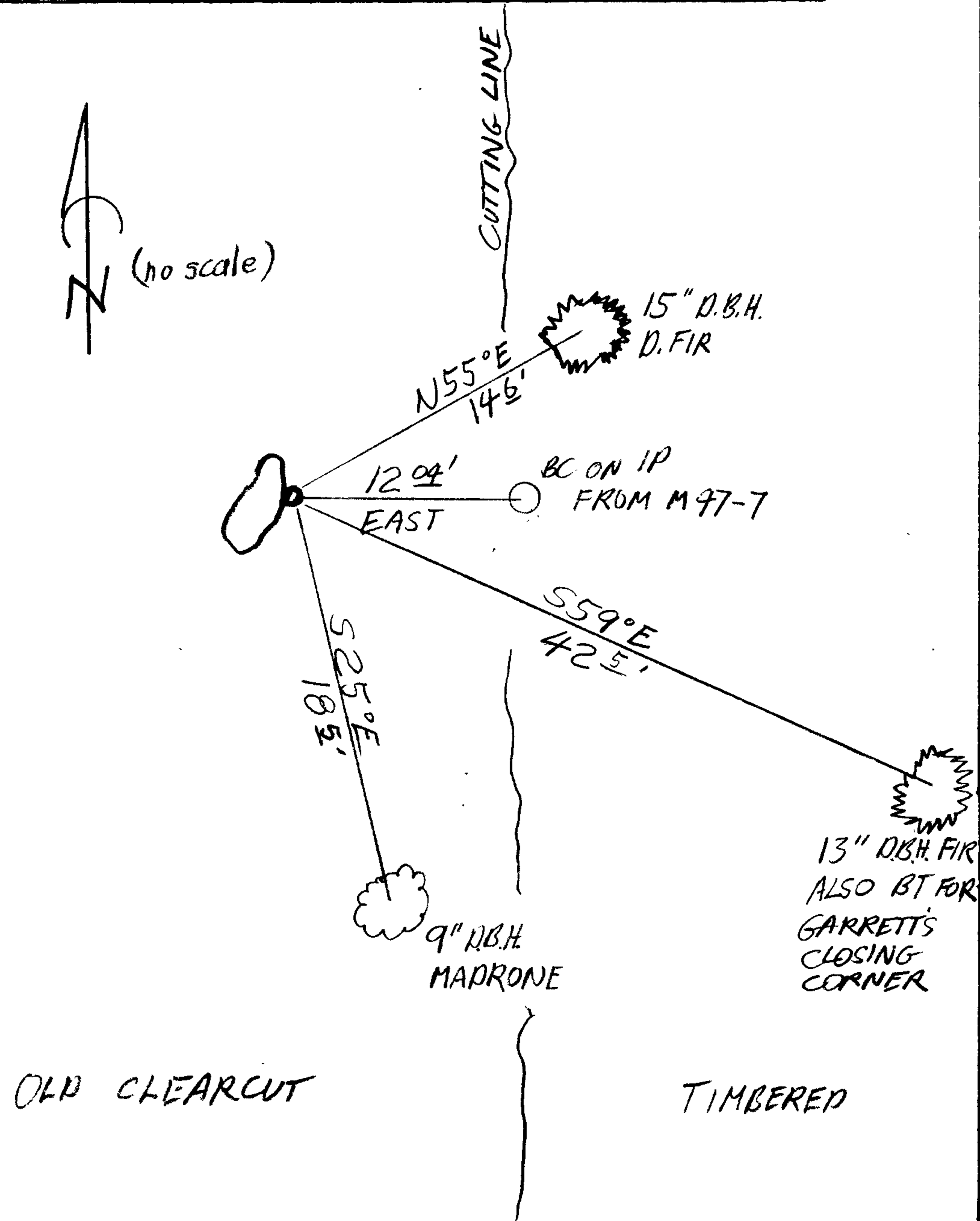
N/A

N/A

New Accessories

WE ADD NEW CLOSING CORNER FROM GARRETT SURVEY M47-7; A 3 INCH DIAMETER BRASS CAP ON A 2 INCH I.D. IRON PIPE PROTRUDING 8 INCHES ABOVE GROUND BEARS EAST, 12.04 FEET DIST (AS PER M47-7). WE ALSO TIE SOUTHEAST BEARING TREE FOR THE ABOVE MENTIONED CAP (ORIGINALLY AN 11" FIR SCRIBED T265 R1W S7 BT) NOW A 13 INCH D.B.H. D. FIR WITH A FULLY HEALED DOUBLE BLAZE BEARS S59°E, 42.5 FEET DISTANT. A NEW BEARING TREE, A 15 INCH D.B.H. D. FIR SCRIBED CC, T269 R1W, S6, CS BT ON A DOUBLE BLAZE BEARS N55°E, 14 1/2 FEET DISTANT.

Sketch of Monument, Accessories, and General Area



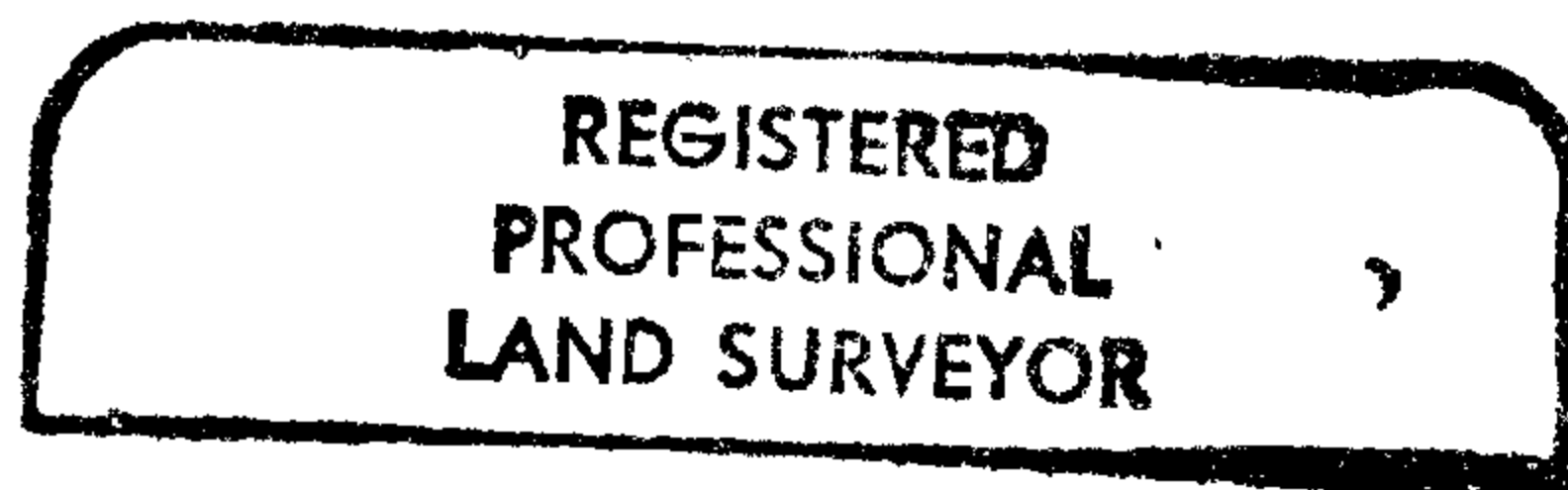
Location & Comments

MONUMENT IS AT EAST EDGE OF OLD CLEAR CUT ON A STILL DEFINITE NORTH SOUTH CUTTING LINE AND IS SOUTH APPROX. 350 FEET FROM A CREEK COURSING N75°E.

Comp. Declin. 18 1/2° E  
Agency PCSO  
Party Chief STEPHEN JOHN FLAUSE  
Notekeeper R.W. SMITH  
Witnesses Stephen John Flause

Address

Surveyor's Seal



Handwritten signature: Larry E. Monrean

