

GOVERNMENT CORNER RESTORATION FORM

Township 265 Range RLW Sec. 56 County DOUGLAS
State OREGON Date 4/19/87 No. _____

Corner Designation

512 | 56
 | 57 CC

- _____ Condition Report Only
- _____ Not Found
- Renewed
- _____ Unrecorded
- _____ Surveyed In
- _____ Referenced Out

Previous Renewals # 101 of T26-2 #65 T26-1
Monument(s) Found: (Condition and Source)

A 3 INCH DIAMETER BRASS CAP MARKED AS AT RIGHT ON A 2 INCH I.D. IRON PIPE FIRMLY SET AND PROTRUDING 8 INCHES ABOVE GROUND.
MONUMENT SET IN RENEWAL 101 FROM GARRET SURVEY FILED AT PCSO AS M97-7.

T265

R2W | 56
512 | 57

1972

RPLS 544

Accessories Found:

TWO ORIGINAL TREES FROM RENEWAL # 101.
A 13" FIR NOW A 15 INCH D.B.H. DOUGLAS FIR WITH A FULLY HEALED DOUBLE BLAZE BEARS N06°E, 10.1 FEET DISTANT.
AN 11" FIR NOW A 13 INCH D.B.H. DOUGLAS FIR WITH A FULLY HEALED DOUBLE BLAZE BEARS S48 1/2°E, 32.8 FT DISTANT.
A USFS METAL WITNESS SIGN AND POST BEARS SOUTH, 4.5 FEET DISTANT. PREVIOUSLY UNRECORDED.

#138 T26-2 x
#114 T 26-1 x

RENEWAL

Monument Set (Procedure and Description)

Monument Detail

N/A

N/A

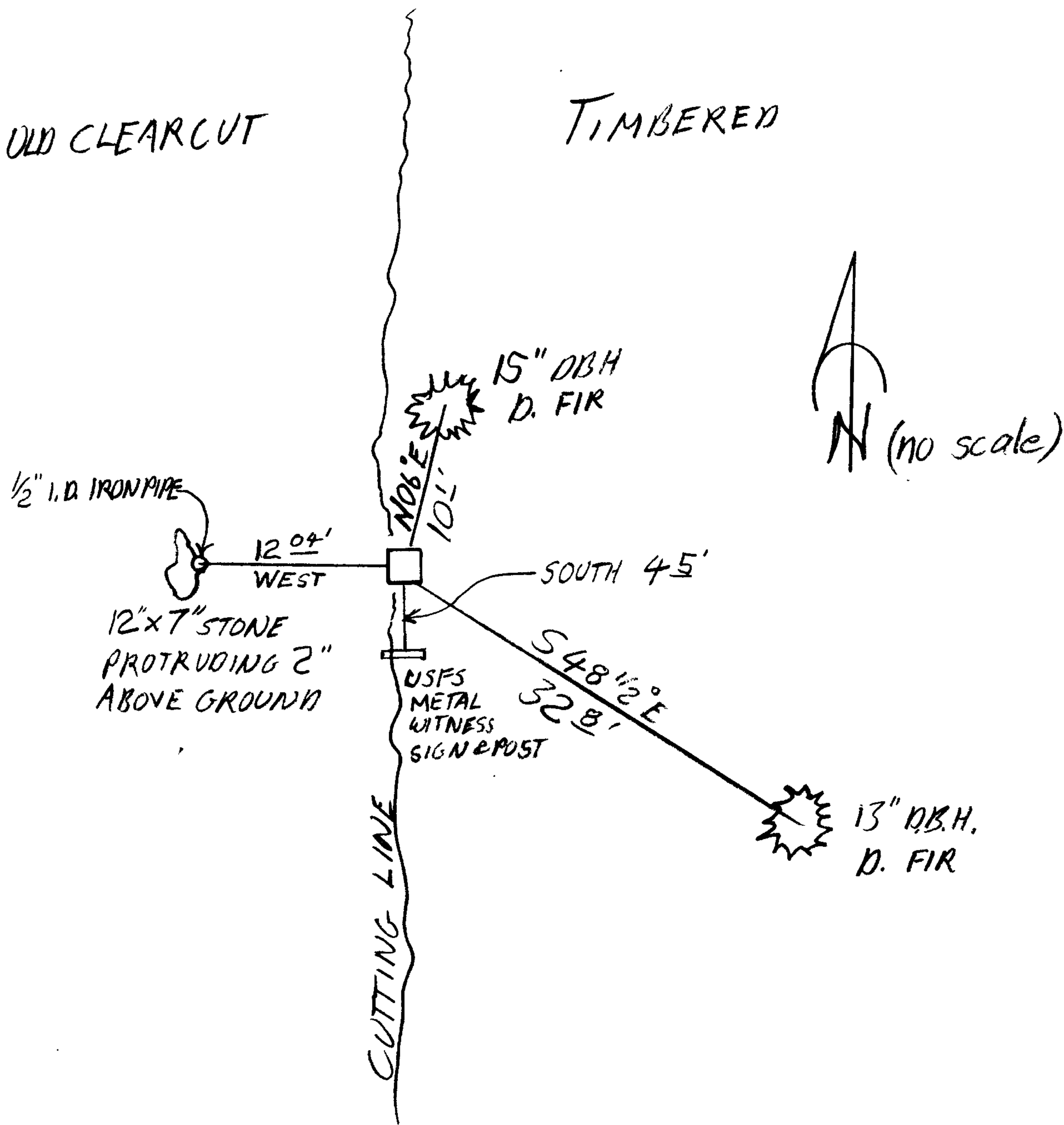
New Accessories

WE ADD ORIGINAL 1910 CLOSING CORNER (AS SET BY MENISCH) AS A NEW ACCESSORY. THIS CLOSING CORNER IS MONUMENTED BY THE ORIGINAL 16 INCH X 12 INCH X 12 INCH BASALT STONE, NOW A BROKEN 12 INCH X 7 INCH STONE PROTRUDING 2 INCHES ABOVE GROUND WITH NO MARKS VISIBLE (WE DO NOT DISTURB), AND BY GARRETT'S 1/2 INCH I. D. IRON PIPE ON EAST EDGE OF STONE PROTRUDING APPROX 3 INCHES ABOVE GROUND. THIS IRON PIPE BEARS WEST, 12.04 FEET FROM B.C. MONUMENT. (AGREES WITH RECORD BEARING AND DISTANCE FROM M 47-7)

Sketch of Monument, Accessories, and General Area

Location & Comments

MONUMENT IS ON EAST EDGE OF OLD CLEAR CUT ON A STILL DEFINITE NORTH-SOUTH CUTTING LINE AND IS SOUTH APPROX. 350 FEET FROM A CREEK COURSING N 75° E.



Comp. Declin. 18 1/2° E
Agency DCSO
Party Chief STEPHEN JOHN FLAUSE
Notekeeper R. W. SMITH
Witnesses Stephen John Flause

Address

Surveyor's Seal

REGISTERED PROFESSIONAL LAND SURVEYOR

Signature of Larry E. Monrean

OREGON JULY 13, 1979 LARRY E. MONREAN #1830