

GOVERNMENT CORNER RESTORATION FORM

Township 26S Range 2W Sec. 1 County DOUGLAS

State OR Date 4/17/87 No. _____

Corner Designation

S1 | ONLY
S12 |

- Condition Report Only
- Not Found
- Renewed
- Unrecorded
- Surveyed In
- Referenced Out

Previous Renewals 1910 RESURVEY #25, USES 1972 RESURVEY M 47-7

MONUMENT DETAIL

Monument(s) Found: (Condition and Source)

A DECSO 2 1/2" DIA. BC. ON A 1" I.P.
SURROUNDED BY A SMALL MOUND OF
STONES PROTRUDES 12 IN ABOVE
GROUND.

COUNTY SURVEYOR'S OFFICE

26S 2W

1/4 | S1
S12 |
1961

Accessories Found:

4" NOW 15" DIA. D.FIR WITH A FULLY HEALED SINGLE BLAZE
BEARS N33°W, 21.5 FT (AGREES WITH M47-7, 1910 RESURVEY AND REN#25
DISTANCE IS 20.5) ORIG. BT

36" NOW ROOT HOLE WITH A TIPPED OUT 36" DIA. D.FIR THAT HAS
A FULLY HEALED SINGLE BLAZE, ROOT HOLE BEARS S72°W, 29.0 FT
(AGREES WITH REC). 1910 RESURVEY

10" NOW 13" DIA. R. CEDAR WITH A PARTIALLY HEALED DOUBLE BLAZE,
ILLEGIBLE SCRIBING VISIBLE, BEARS S85°W, 8.9 FT (AGREES WITH REC.)
PER REN# 25.

U.S.F.S. WITNESS POST + SIGN BEARS SOUTH, 5.3 FT
PREVIOUSLY UNRECORDED, SOURCE UNKNOWN.

#137 T26-2 ✓
#113 T26-1 ✓

NO. 62/40-15 C

RENEWAL

Monument Set (Procedure and Description)

WE REMOVED "Y" FROM BC/I.P. AND
BUILT UP A 2 FT. DIA. 1 FT HIGH MOUND
OF STONE

Monument Detail

COUNTY SURVEYOR'S OFFICE

S1
S12

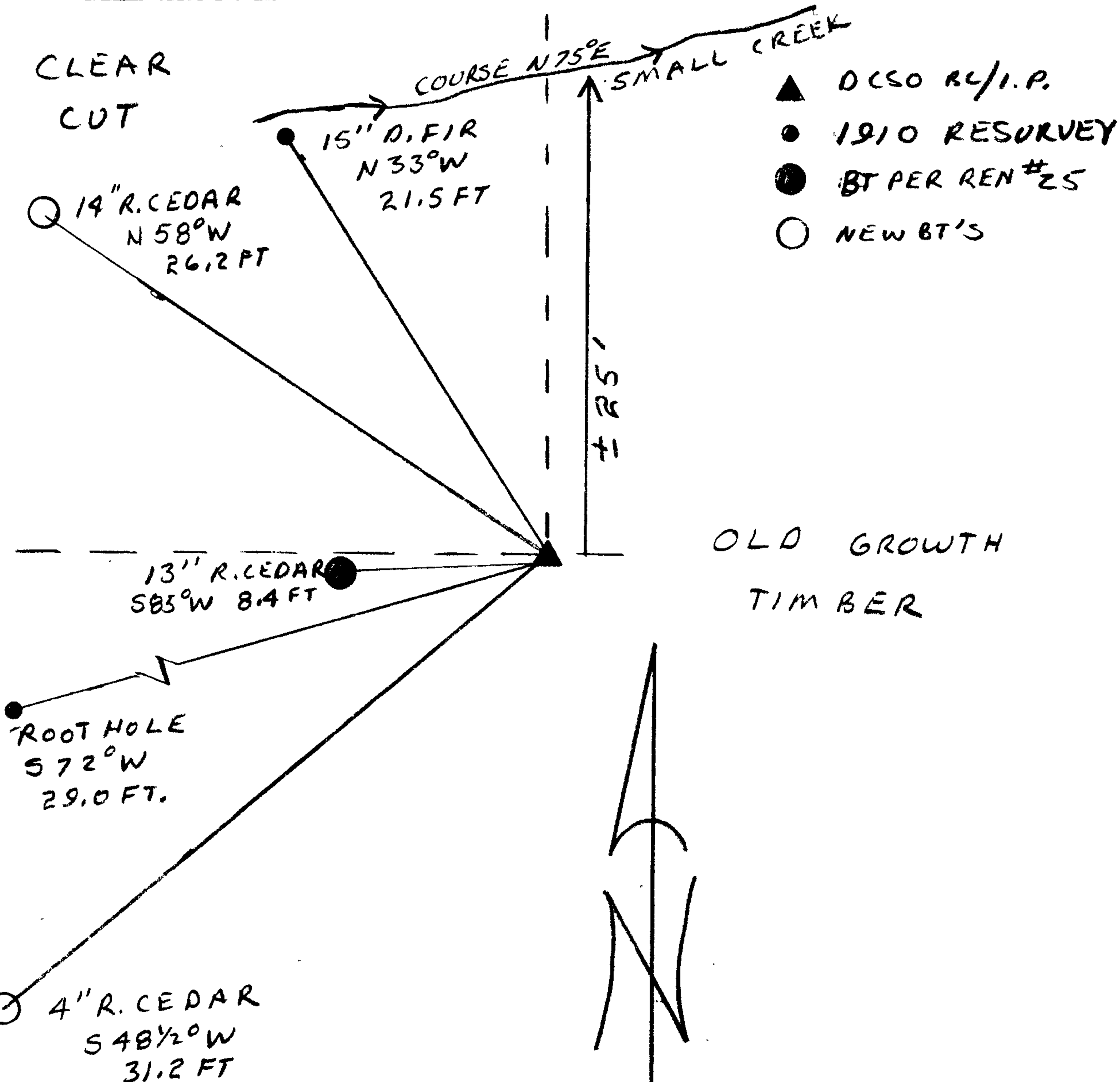
1961

New Accessories

14" DIA. R. CEDAR DOUBLE BLAZED AND SCRIBED "T265 R2W S1 CS BT"
BEARS N58°W, 26.2 FT.

4" DIA. R. CEDAR DOUBLE BLAZED AND SCRIBED "X BT"
BEARS S48 1/2°W, 31.2 FT.

Sketch of Monument, Accessories, and General Area



Location & Comments

CORNER LIES AT SOUTHEAST
CORNER OF A NEW CLEAR CUT.

Comp. Declin. 18 1/2° E
Agency DCSO
Party Chief RANDALL W SMITH
Notekeeper Randall W Smith
Witnesses STEPHEN J FLAUSCH

Address

Surveyor's Seal

REGISTERED
PROFESSIONAL
LAND SURVEYOR

Handwritten signature

OREGON
JULY 13, 1979
LARRY E. MONREAN
#1830