

GOVERNMENT CORNER RESTORATION FORM

Township 29S Range 8W Sec. 29 County DOUGLAS

State OR Date 4/7/87 No. _____

Corner Designation

NE
CORNER
DLC #43

- _____ Condition Report Only
- _____ Not Found
- Renewed
- _____ Unrecorded
- _____ Surveyed In
- _____ Referenced Out

Previous Renewals #120 (M2T-13)

Monument(s) Found: (Condition and Source)

AN UNRECORDED CONCRETE NAIL SET FLUSH IN ASPHALTIC SURFACE OF BURMA ROAD. BEARING TREES INDICATE NAIL IS SET OVER 3/4 INCH IRON ROD CORNER MONUMENT SET BY BYRON IN SURVEY M 27-13 AS RECORDED IN DC SO SURVEY RECORDS. WE DO NOT DISTURB ROAD SURFACE TO SEARCH FOR 3/4 INCH IRON ROD.

N/A

MONUMENT DETAIL

Accessories Found:

NO ORIGINAL EVIDENCE FOUND.
 FROM RENEWAL #120 TWO BEARING TREES FOUND. A 25" R. FIR NOW A 36 INCH D.B.H. DOUGLAS FIR WITH A FULLY HEALED DOUBLE BLAZE, BEARS N 33° E, 60.2 FEET DISTANT (AS PER RECORD). A W. OAK NOW A 27 INCH D.B.H., W. OAK WITH A FULLY HEALED DOUBLE BLAZE BEARS N 61° W, 108.6 FEET DISTANT (AS PER RECORD).

#2044

RENEWAL

Monument Set (Procedure and Description)

Monument Detail

N/A

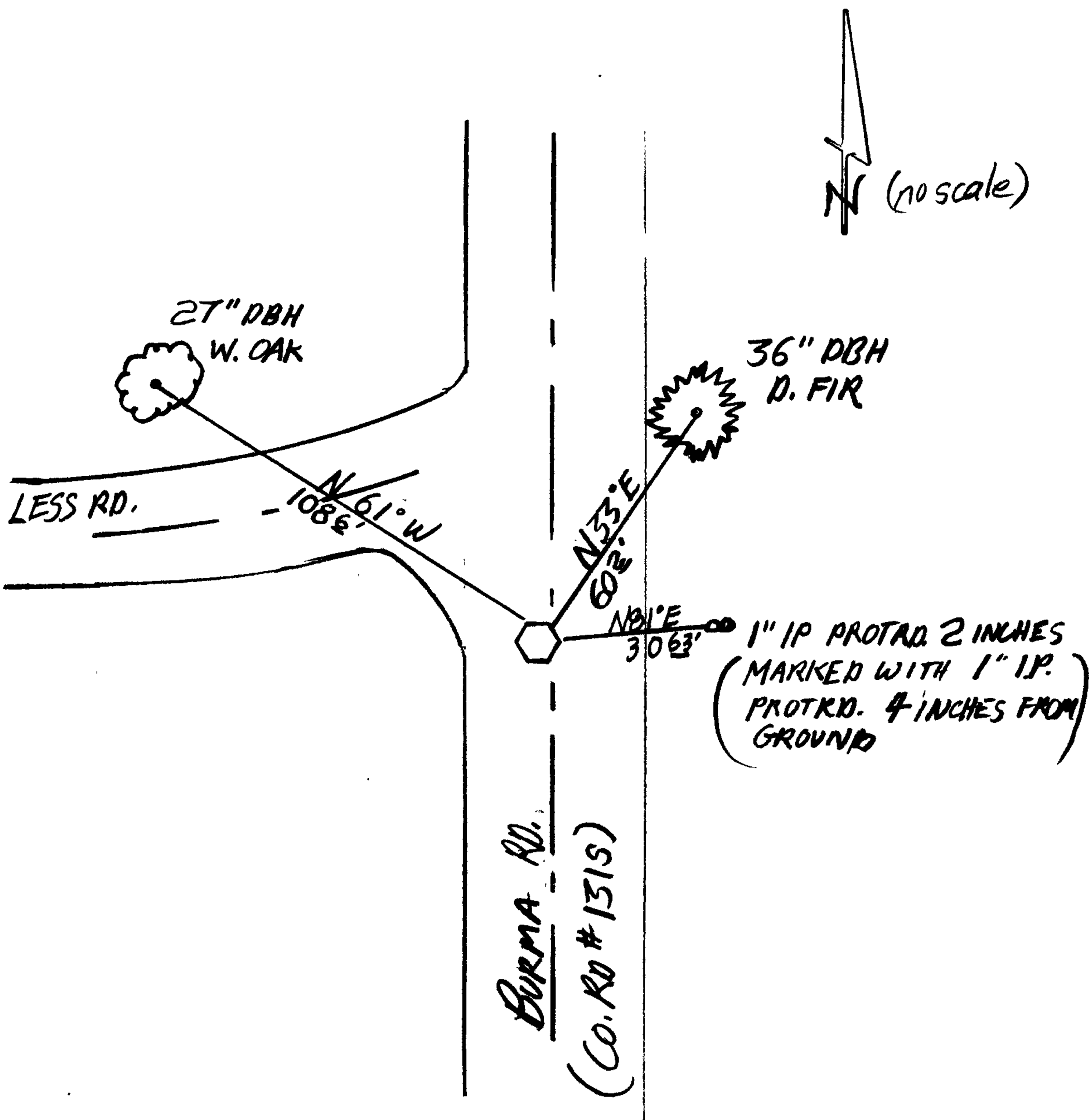
N/A

New Accessories

A 1 INCH IRON PIPE PROTRUDING 2 INCHES ABOVE THE GROUND AND A 1 INCH IRON PIPE PROTRUDING 4 INCHES ABOVE (TALLER PIPE SET BY PROPERTY OWNER R. HALTERMAN TO MARK POSITION OF SHORTER PIPE; PROPERTY OWNER BELIEVES PIPES MARK ROAD R/W, NO RECORD OF PIPE BEING SET FOUND AT DCSO). THE 1 INCH IRON PIPE, PROTRUDING 2 INCHES ABOVE GROUND, AS MENTIONED, BEARS N 81° E, 30.63 FT DISTANT.

Sketch of Monument, Accessories, and General Area

Location & Comments



IN CAMAS VALLEY TAKE BURMA ROAD SOUTH FROM HIGHWAY 42.

Comp. Declin. 18 1/2° E
Agency DCSO
Party Chief STEPHEN JOHN FAUSE
Notekeeper R.W. SMITH
Witnesses Stephen John Fause

Address

Surveyor's Seal

REGISTERED PROFESSIONAL LAND SURVEYOR

Signature of Larry E. Monrean

OREGON JULY 13, 1979 LARRY E. MONREAN #1830