

GOVERNMENT CORNER RESTORATION FORM

Township 29S Range 5W Sec. 34 County DOUGLAS

State OR Date 1/15/87 No. _____

Corner Designation

A POINT OF SURVEY
DESIGNATED AS
 $\frac{1}{4}$ S34 | S35
PER. M 11-39

- Condition Report Only
- Not Found
- Renewed
- Unrecorded
- Surveyed In
- Referenced Out

Previous Renewals #98

Monument(s) Found: (Condition and Source)

3/4 IN. I.R. PROTRUDING 5 IN.
ABOVE GROUND, (PER REN#98).

MONUMENT DETAIL

N/A

Accessories Found:

NO ORIG. BT'S FOUND

BT'S PER REN#98

29" NW 3.5" DIA. INCENSE CEDAR WITH A PARTIALLY HEALED DOUBLE
BLAZE "4" AND PARTIAL SCRIBING VISIBLE, "X" AXED IN BARK
ABOVE BLAZES, BEARS N 26 1/2° E, 32.8 FT (AGREES WITH REC.)

18" NW 30" DIA. D. FIR WITH A FULLY HEALED DOUBLE BLAZE
AND "X" AXED IN BARK ABOVE BLAZES, BEARS S 0 1/2° E, 30.4 FT
(REC. S 57° 32' W, 30.4 FT). BLAZES FACE I.R.

#223 X

RENEWAL

Monument Set (Procedure and Description)

Monument Detail

NONE

N/A

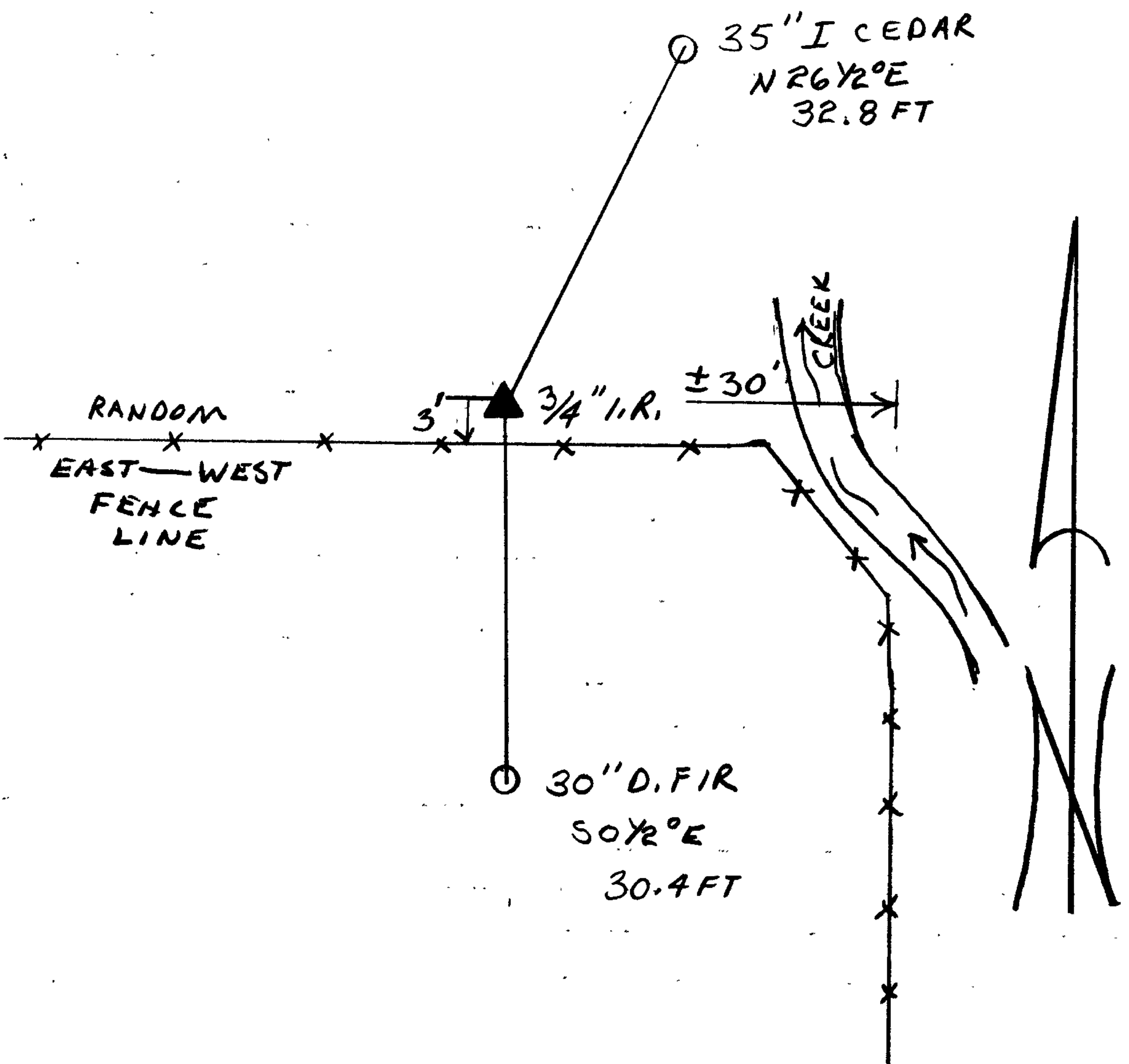
3/4" I.R. SET IN 1955 BY GENE JOHNSON PER M 11-39, IS A POINT OF SURVEY. MONUMENT ORIGINALLY SET AS PROPORTIONATE 1/4 COR POSITION BETWEEN S34/S35. SUBSEQUENT 1957 BLM RESURVEY SHOWS POSITION OF SEC. COR. TO SOUTH SET IN 1951 BY JOHN MARKHAM (CS FILE # 40/259) IN ERROR. 3/4" I.R. USED AS 1/4 COR. POSITION IN 1969 SURVEY BY DOUGLAS COUNTY SURVEYORS OFFICE TO SUBDIVIDE SEC. 35 (M 37-44).

New Accessories

NONE

Sketch of Monument, Accessories, and General Area

Location & Comments



CORNER LIES ON EAST SLOPE APPROX. 50 FT WEST OF SMALL CREEK.

Comp. Declin. 18 1/2° E
Agency DCSO
Party Chief KANDALL W. SMITH
Notekeeper STEPHEN J. FLAUSE
Witnesses WILLIAM SPENCER

Address

Surveyor's Seal

REGISTERED
PROFESSIONAL
LAND SURVEYOR

Larry E. Monrean
OREGON
JULY 13, 1979
LARRY E. MONREAN
#1830