

GOVERNMENT CORNER RESTORATION FORM

Township 27 S Range 6 W Sec. 1 County DOUGLAS

State OREGON Date 10-17-86 No. _____

Corner Designation

T 27 S R 1 W

| | |
|------|------|
| s 2 | s 1 |
| s 11 | s 12 |

- Condition Report Only
- Not Found
- Renewed
- Unrecorded
- Surveyed In
- Referenced Out

MONUMENT DETAIL

Previous Renewals 42 (1948), 152 (1977), & 164 (1982)

Monument(s) Found: (Condition and Source)

NO MONUMENT OF RECORD WAS LOCATED.
THE LOCATION OF THE CORNER AS
DETERMINED BY REFERENCES FALLS IN
A STEEP CUT BANK ALONG NORTHERLY
EDGE OF NEW ROAD. THIS AREA
HAS BEEN RIPPED BUT STILL APPEARS
TO BE UNSTABLE

Accessories Found:

A 32 NOW 36 INCH DIAMETER B OAK WITH PREVIOUSLY OPENED ROTTED BLAZE
BEARS N 22 1/2° E 24.2 FEET.

A 36 INCH WHITE OAK WITH FAINT BLAZE VISIBLE BEARS N 85° W
20.4 FEET TO FACE.

ALL OTHER BT'S AS REPORTED IN PREVIOUS RENEWAL HAVE
BEEN DESTROYED.

#176 X

RENEWAL

Monument Set (Procedure and Description)

NO MONUMENT SET, I BELIEVE THIS AREA IS NOT STABLE ENOUGH TO SET MONUMENT.

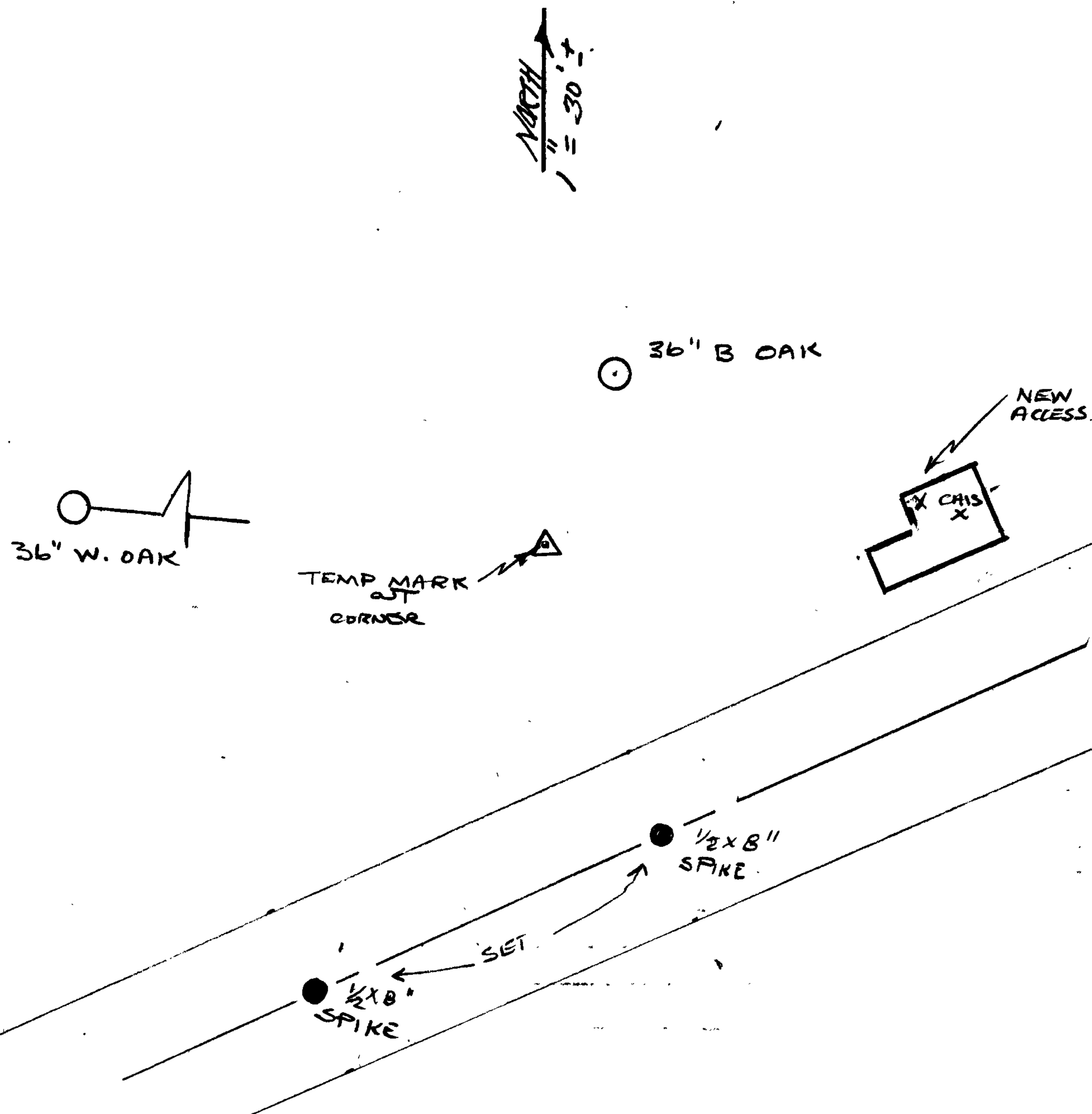
Monument Detail

New Accessories

- 1) CHISELED "X" IN NNW CORNER OF CONCRETE PAD OF UTILITY BOX BEARS N 87° E 50 ¹⁶/₁₀₀ FEET
- 2) SET 1/2" x 8" SPIKE MARKED "B01" IN CENTER OF ROAD BEARS S 22 1/2° E 41 ⁵⁰/₁₀₀ FT.
- 3) SET 1/2" x 8" SPIKE MARKED "B02" IN CENTER OF ROAD BEARS S 27 1/2° W 66 ⁷¹/₁₀₀ FEET.

BEARINGS TAKEN WITH STAFF COMPASS. DISTANCES WERE MEASURED WITH STEEL TAPE TO NEAREST 1/100 FOOT-DISTANCES SHOWN HORIZONTAL

Sketch of Monument, Accessories, and General Area



Location & Comments

Comp. Declin. 19° EAST
 Agency DOUGLAS COUNTY SURVEYOR'S OFFICE
 Party Chief LARRY E. MONREAN
 Notekeeper " " "
 Witnesses RW SMITH

Address

Surveyor's Seal

REGISTERED
 PROFESSIONAL
 LAND SURVEYOR

Larry E. Monrean

OREGON
 JULY 13, 1979
 LARRY E. MONREAN
 #1830