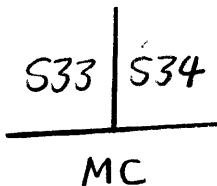


GOVERNMENT CORNER RESTORATION FORM

Township 265 Range 6W Sec. 33 County DOUGLAS

State OREGON Date 12/05/86 No. _____

Corner Designation



- _____ Condition Report Only
- _____ Not Found
- Renewed
- _____ Unrecorded
- _____ Surveyed In
- _____ Referenced Out

Previous Renewals #29, #104

Monument(s) Found: (Condition and Source)

MONUMENT POSITION OCCASIONALLY COVERED BY HIGHWATER OF UMPQUA RIVER. MONUMENT FROM RENEWAL # 104 APPARENTLY WASHED AWAY. MONUMENT NOT FOUND AFTER REASONABLE SEARCH OF AREA.

Accessories Found:

NO ORIGINAL BEARING TREES FOUND.

FROM RENEWAL # 29 ONE BEARING TREE FOUND. A TRIPLE WHITE OAK 14" DIA. NOW A 15 INCH DBH (ON MOST SOUTHERLY TRUNK) W. OAK WITH A FULLY HEALED DOUBLE BLAZE BEARS N43 1/2° E 29 0 FEET TO CENTER OF MOST SOUTHERLY TRUNK AT BLAZE HEIGHT. (RECORD N43 1/2° E, 29 0 FEET (A FACE MEASUREMENT)).

FROM RENEWAL # 104 THE BRASS CAP MONUMENT FOR S28 | S27 BEARS NORTH, 97° FEET DISTANT (AS PER RECORD) S33 | S34

T265 R64

#187 ✓

RENEWAL

Monument Set (Procedure and Description)

Monument Detail

USING THE FOUND BEARING TREE, NORTH EAST AND THE FOUND SECTION CORNER S28 | S27 S33 | S34

BEARING NORTH, 97° FEET DISTANT, THE MEANDER CORNER POSITION IS REESTABLISHED. THIS POSITION IS REMONUMENTED WITH A DCSO 2 3/8 INCH DIAMETER BRASS CAP MARKED AS AT RIGHT ON A 1 3/8 INCH DIAMETER, 32 INCH LONG GALVANIZED IRON PIPE SET PROTRUDING 5 INCHES ABOVE GROUND AND SURROUNDED BY A 2 FOOT DIAMETER MOUND OF STONE.

DOUGLAS COUNTY SURVEYORS OFFICE

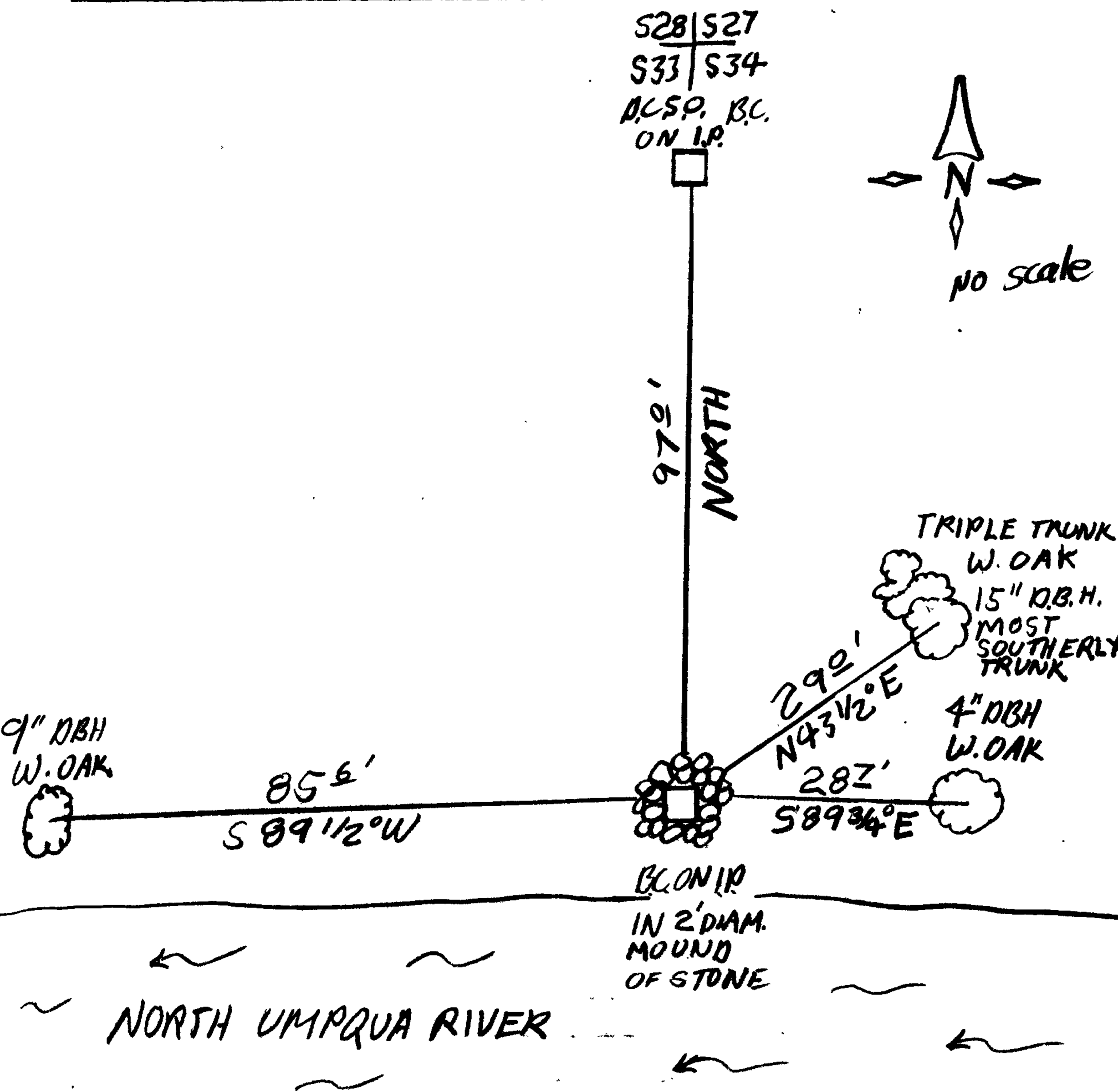
T265
R6W
S33 | S34
MC
1986

New Accessories

A 4 INCH DBH. W. OAK SCRIBED X BT BEARS S89 3/4° E, 28 1/2 FEET DISTANT.
A 9 INCH DBH W. OAK SCRIBED MC S33 CS BT ON A DOUBLE BLAZE BEARS S89 1/2° W, 85 1/2 FEET DISTANT.

Sketch of Monument, Accessories, and General Area

Location & Comments



SEE DCSO GEODETIC CONTROL BOOK FOR COORDINATES

Comp. Declin. 18 1/2° E
Agency DCSO
Party Chief SU FLAUSE
Notekeeper Stephen John Flause
Witnesses R.W. SHITH

Address

Surveyor's Seal
REGISTERED PROFESSIONAL LAND SURVEYOR

Larry E. Monrean
OREGON
JULY 13, 1979
LARRY E. MONREAN
#1830

NORTH UMPQUA RIVER