

GOVERNMENT CORNER RESTORATION FORM

Township 24 S Range 4 W Sec. 30 County DOUGLAS

State OREGON Date AUGUST 1, 1986 No. _____

Corner Designation

R	S 25	S 30	R
W	S 36	S 31	W

- Condition Report Only
- Not Found
- Renewed
- Unrecorded
- Surveyed In
- Referenced Out

Previous Renewals 1924 G G STEWART #22, 1958 BYRON, 94, 6132

MONUMENT DETAIL

Monument(s) Found: (Condition and Source)

FOUND 1" X 36" GAL. IRON PIPE WITH BRASS CAP OUT OF GROUND. ORIGINAL WAS ABLE TO IDENTIFY LOCATION POINT FOR CORNER BY DEPRESSION IN GROUND AND LOCATION OF BROKEN FLANGED BASE OF MONUMENT UNDER SURFACE.

COUNTY SURVEYOR'S OFFICE

R	S 25	S 30	R
S			4
W	S 36	S 31	W

T 24 S
1958

Accessories Found:

W. OAK NOW A 26" DIA STUMP WITH GLAZE VISIBLE IN GROWTH RING PATTERN BEARS N 59° W 39.8 FT.

12" W OAK N 32° E 59.5 FT HAS BEEN CUT DOWN

14" W OAK NOW A 16" DIA SNAG WITH WELL HEALED GLAZE BEARS S 79° W 32° FEET

16" W OAK NOW A 22 INCH DIAM STUMP BEARS S 25° E 60.8 FT. (STUMP LOCATED ON EASTERLY EDGE OF CREEK BED)

ORIG 16" MAHOG N 6 1/2° E 46.2 FEET NOT FOUND (THIS POSITION FAILS AT WESTERLY EDGE OF CREEK BED)

14" B. OAK NOW 18" DIAM AND CUT DOWN BEARS N 37 1/2° W 13.2 FEET (REC N 38° W 12.0 FEET)

#172 T24-4
#109 T24-5

C.S. File No. 62/37-7AC

RENEWAL

Monument Set (Procedure and Description)

Monument Detail

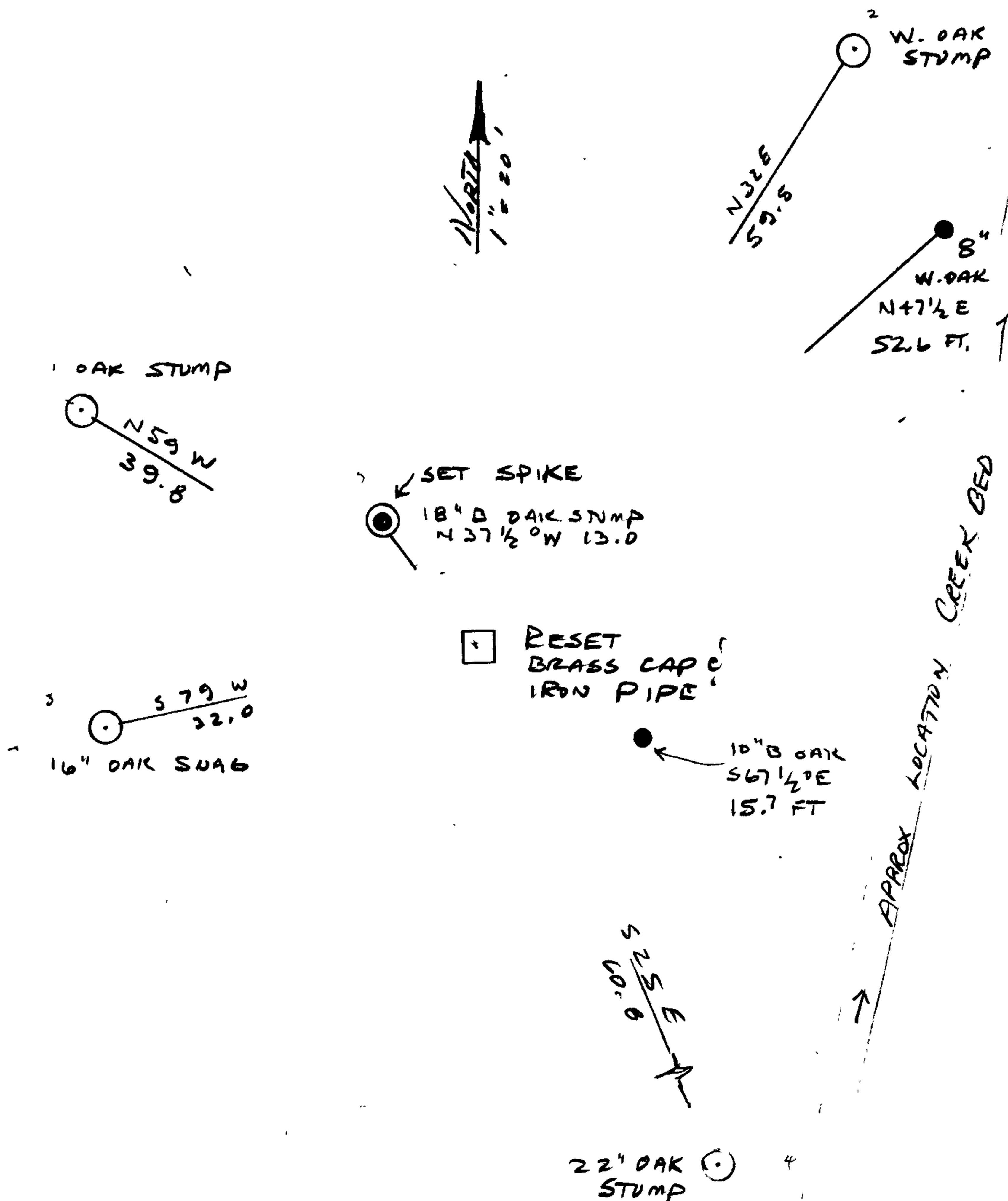
WE RESET MONUMENT WITH
CAP PROTRUDING APPROX. 1 FOOT
ABOVE GROUND, WE ADD THE
WORDS "RESET 1986"

New Accessories

- 10" B. OAK BLAZED AND SCRIBED "T24SRVY S31CSBT" BEARS S62 1/2° E 15.7 FT.
- 8" W. OAK BLAZED AND SCRIBED "T24SRVW S30CSBT" BEARS N47 1/2° E 52.6 FT.
- SET 1/2" x 8" SPIKE IN 18" STUMP OF DOWN BEARING TREE, SPIKE BEARS N37 1/2° W 13.2 FEET AND STAMPED "B0". ALL BT TAGGED WITH DCSD BT TAGS

Sketch of Monument, Accessories, and General Area

Location & Comments



Comp. Declin. 19° EAST
Agency DOUGLAS CO. SURVEYOR'S OFFICE
Party Chief L. E. MONREAN
Notekeeper " "
Witnesses TERRY FRANSEN
COLEEN BUSS

Address

Surveyor's Seal

REGISTERED
PROFESSIONAL
LAND SURVEYOR

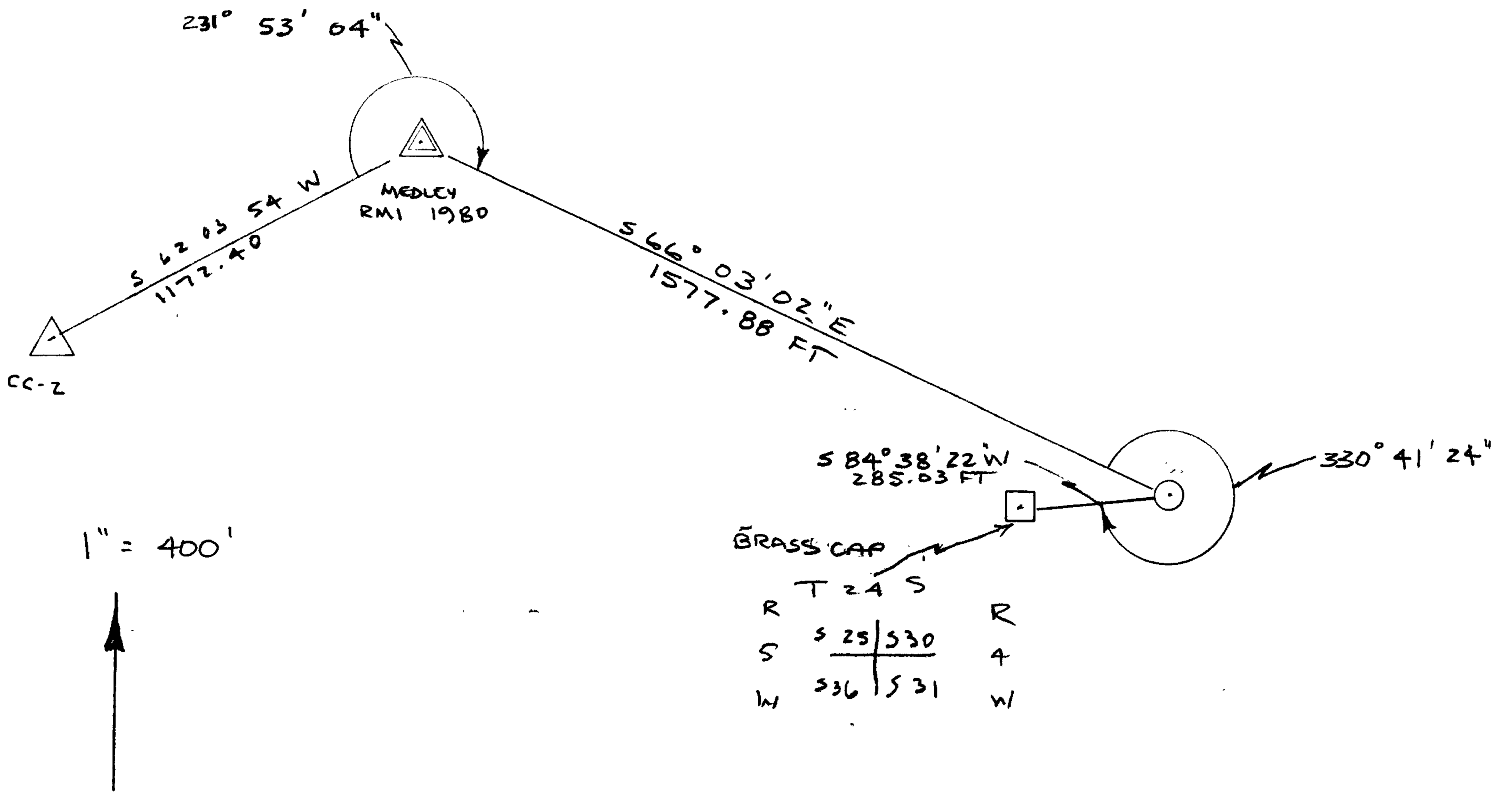
Larry E. Monrean

OREGON
JULY 13, 1979
LARRY E. MONREAN
#1830

SKETCH OF CORNER TIE

	T	24	S	
R				R
S	S	25	S	30
		S	36	S
				31
W				W

FOR FIELD NOTES AND COMPUTATIONS
SEE PROJECT #2013 FOLDERS



BEARINGS BASED ON OCS 27 SOUTH ZONE

USING STATIONS MEDLEY RMI 1980 (661074.50; 1,275,028.70)

CC-2 (660525.27; 1,273,992.90)