

GOVERNMENT CORNER RESTORATION FORM

Township 305 Range 5W Sec. 4 ONLY County DOUGLAS

State OREGON Date SEPT 5 1986 No. _____

Corner Designation

T 295 R 5W

1/4 S 4

T 305 R 5W

Previous Renewals #247 T. 30-5 #174 T. 29-5

Monument(s) Found: (Condition and Source)

BRASS CAP MONUMENT FROM RENEWAL
#247 MISSING SEARCHED FOR BUT NOT
FOUND

Accessories Found:

TWO BEARING TREES FROM RENEWAL #247 FOUND IN GOOD CONDITION.
A 6" B. OAK NOW A 9 INCH D.B.H. BLACK OAK WITH A FULLY HEALED
SINGLE BLAZE WHICH IS OPENED TO REVEAL VISIBLE SCRIBING "1/4" BEARS
S 77 1/2° W, 42.5 FT. DIST. (AS PER REC.)
A 13" LAUREL NOW A 15 INCH D.B.H. MADRONE WITH A FULLY HEALED SINGLE
BLAZE WHICH IS OPENED TO REVEAL VISIBLE ILLEGIBLE SCRIBING BEARS
S 80° E, 42.3 FT. DIST. (RECORD S 80° W, 42.3 FT.)

- Condition Report Only
- Not Found
- Renewed
- Unrecorded
- Surveyed In
- Referenced Out

MONUMENT DETAIL

MONUMENT GONE

#222 T29-5 X
#305 T30-5 X

RENEWAL

Monument Set (Procedure and Description)

Monument Detail

A DISTANCE, DISTANCE INTERSECTION FROM THE FOUND BEARING TREES INDICATES THAT BEARING ORIGINALLY RECORDED TO THE LAUREL (MADRONE) WAS INCORRECT; THIS CONCLUSION IS CORROBORATED BY THE BEARING TREE TAG, FOUND ON THE TREE, WHICH WAS MARKED IN 1970 DURING RENEWAL #247, AND WHICH INDICATES A BEARING OF S 80° E.

A NEW 2 3/8 INCH DIAMETER BRASS CAP MARKED AS AT RIGHT ON A 1 1/4 INCH O.D. IRON PIPE 32 INCHES LONG IS SET 26 INCHES IN THE GROUND AT THE DISTANCE, DISTANCE INTERSECTION FROM THE FOUND BEARING TREES AS EXPLAINED ABOVE.

DOUGLAS COUNTY SURVEYORS

T29S
R5W

1/4 S4

T30S R5W

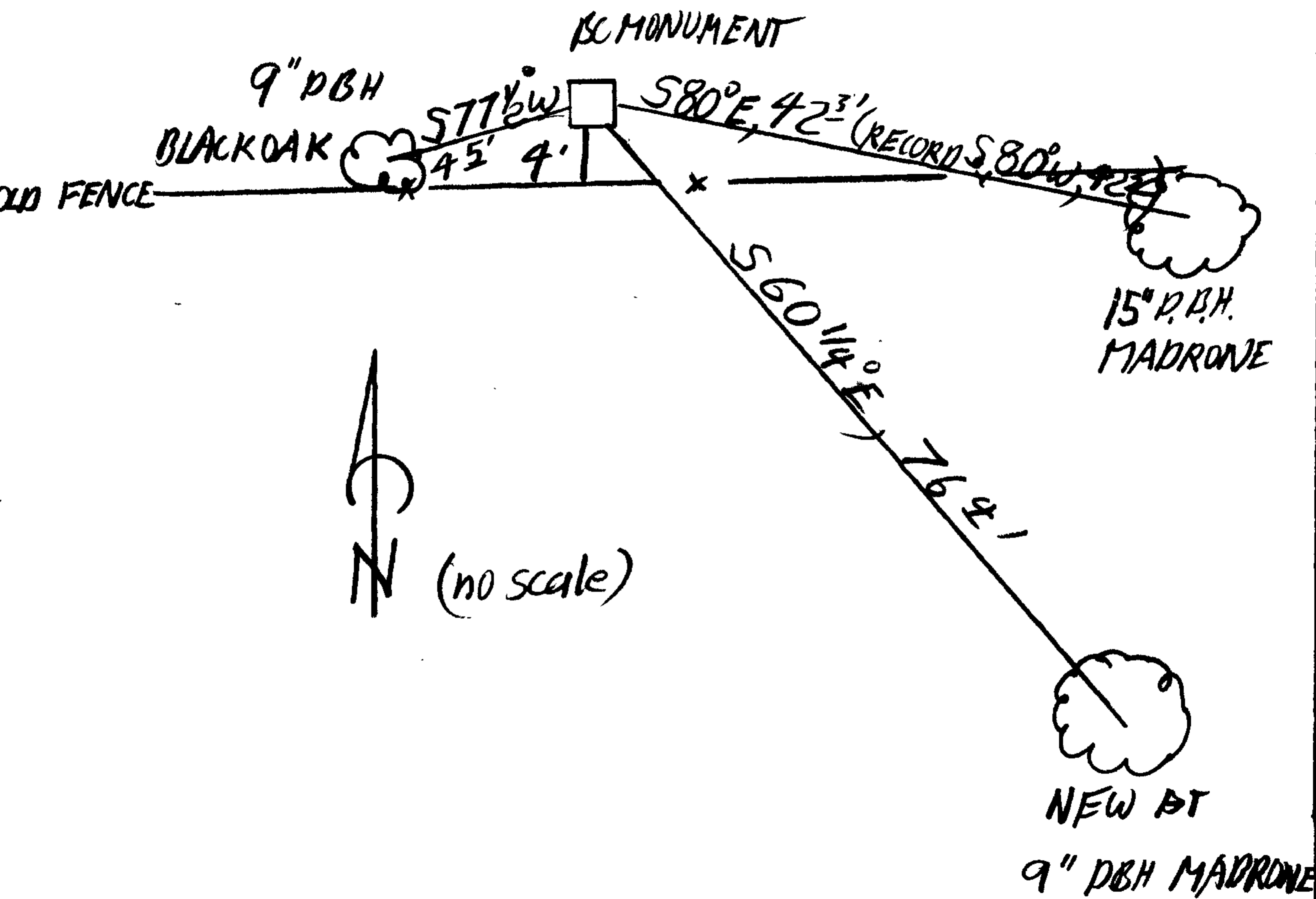
1986

OFFICE

New Accessories

A 9 INCH D.B.H. MADRONE DOUBLE BLAZED AND SCRIBED 1/4 S 4 CS BT BEARS S 60 1/4° E, 76 1/2 FT DISTANT.

Sketch of Monument, Accessories, and General Area



Location & Comments

MONUMENT LIES APPROX. 4 FT NORTH FROM AN OLD EAST WEST FENCE AND APPROXIMATELY 550 FT. EAST FROM THE PAVED END OF CLARK STREET

Comp. Declin. 18 1/2° E
Agency DCSO
Party Chief STEPHEN FLAHE
Notekeeper R.W. SMITH
Witnesses Stephen John Flahse

Address

Surveyor's Seal

REGISTERED
PROFESSIONAL
LAND SURVEYOR

Larry E. Monrean

OREGON
JULY 13, 1979
LARRY E. MONREAN
#1830