

GOVERNMENT CORNER RESTORATION FORM

Township 22S Range 8W Sec. 28 County DOUGLAS

State OR Date 10/7/86 No. _____

Corner Designation

NW COR.
DLC#54

- Condition Report Only
- Not Found
- Renewed
- Unrecorded
- Surveyed In
- Referenced Out

Previous Renewals BLM 1964 DEPENDENT RESURVEY

Monument(s) Found: (Condition and Source)

BRASS CAP ON I.P. GONE, RECENT LOGGING IN AREA.

MONUMENT DETAIL

N/A

Accessories Found:

BT'S PER 1964 RESURVEY

23" NOW 39" DIA D.FIR WITH A FULLY HEALED SINGLE BLAZE, OPENED AND SCRIBING FOUND "22S R8W" BEARS N 9 1/4° W, 142.0 FT (REC. N 9 1/4° W, 143.9 FT IS A SLOPE DIST.).

6" NOW 12" DIA. 3 FT HIGH D.FIR STUMP WITH A FULLY HEALED SINGLE BLAZE, OPENED AND SCRIBE FOUND "8". BEARS S 10 1/2° W, 130.0 FT. (AS PER REC).

#168 ✓

RENEWAL

Monument Set (Procedure and Description)

MONUMENT SET FROM 1964 BLM (BT'S AT REC. BEARING AND DIST. TO SW BT AND REC. BEARING AND A SLOPE DIST. TO NW BT. POSITION FALLS IN OLD EAST FENCE LINE (REMNANTS) WITH REMNANTS OF OLD WIRE WOVEN FENCE AND WOOD POST UNCOVERED. WIRE ORIENTED NORTH - SOUTH.

SET A DCSO BRASS CAP ON A 1 3/8" O.D X 32" I.P. AT POSITION EXPLAINED ABOVE, PROTRUSSES 5 IN. ABOVE GROUND.

Monument Detail

DOUGLAS COUNTY SURVEYORS
T225

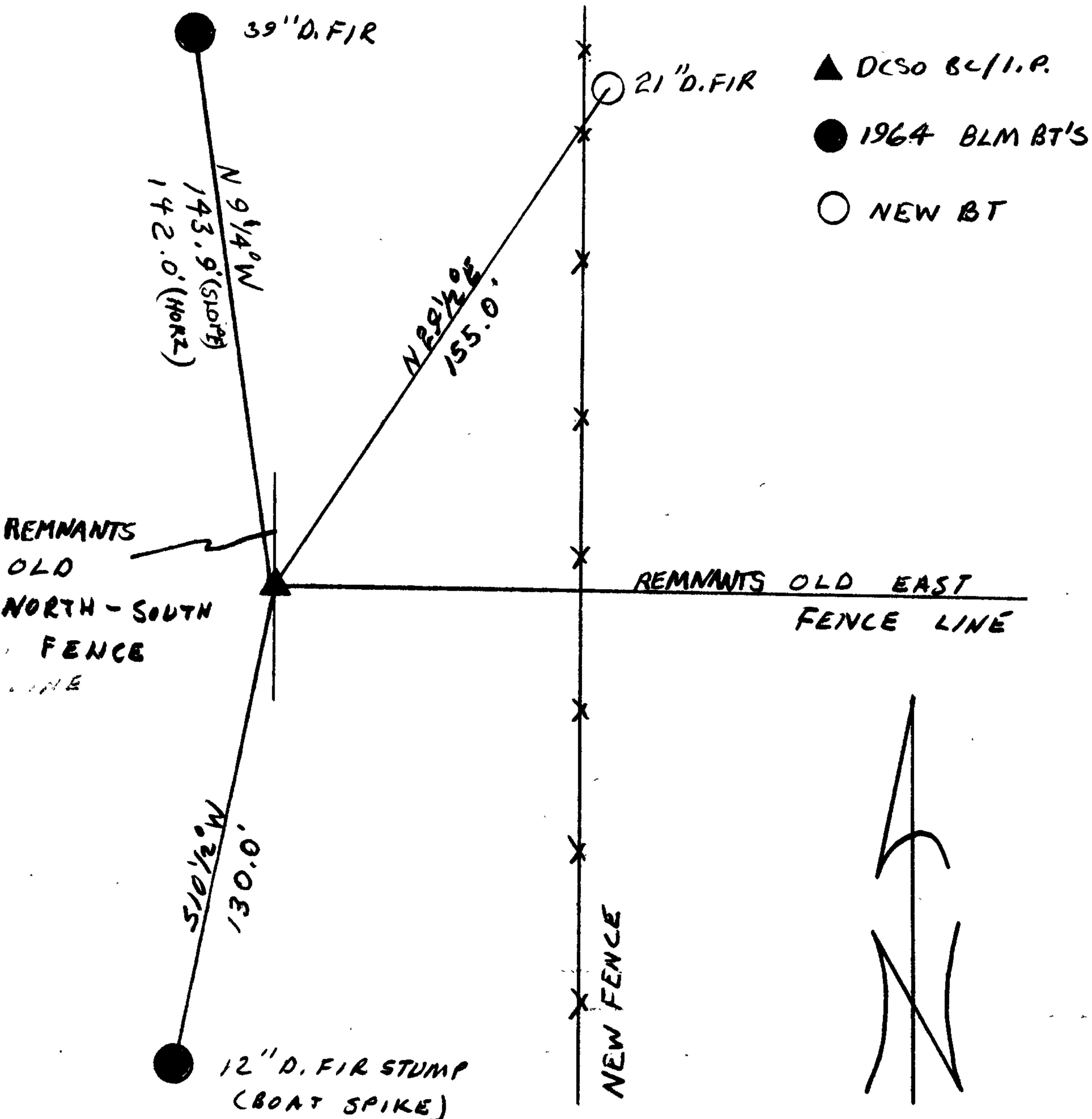
S28 | C 54
R8W
1986

New Accessories

BOAT SPIKE SET IN TOP CENTER OF 12 IN DIA. 3 FT HIGH D. FIR STUMP (SW BT) STAMPED "DCSO 1986" BEARS S 10 1/2° W, 130.0 FT (REC. BEARING + DIST.).

21" DIA. D. FIR DOUBLE BLAZED AND SCRIBED "NW DLC 54 (S BT)" BEARS N 29 1/2° E, 155.0 FT.

Sketch of Monument, Accessories, and General Area

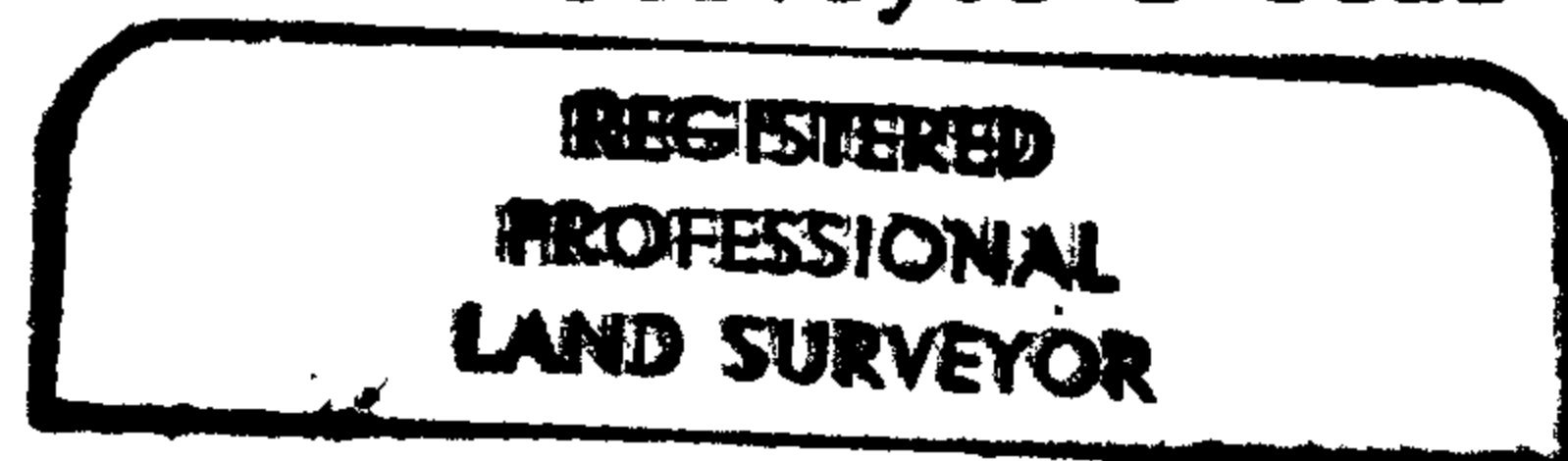


Location & Comments

Comp. Declin. 18 1/2° E
Agency DCSO
Party Chief RANDALL W. SMITH
Notekeeper Randall W. Smith
Witnesses STEPHEN J. FLAUSE

Address

Surveyor's Seal



Larry E. Monrean

