

COUNTY SURVEYORS FILE DATA
DO NOT REMOVE FROM OFFICE

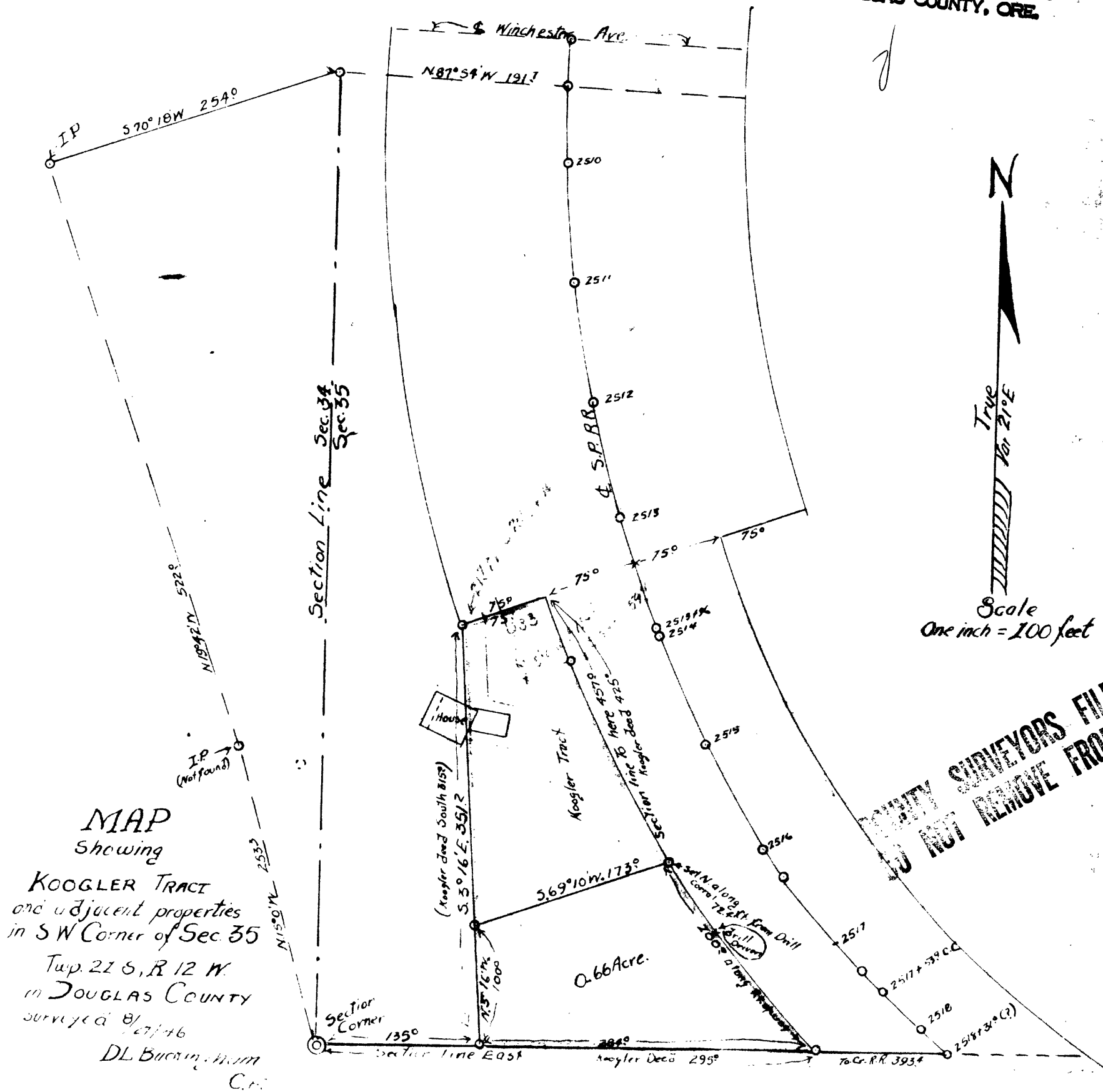
#13

FILED

B-78

MAR 12 1986

COUNTY SURVEYOR
DOUGLAS COUNTY, ORE.



MAP
Showing
KOOGLER TRACT
and adjacent properties
in SW Corner of Sec. 35
Twp. 21 S, R. 12 W.
in DOUGLAS COUNTY
Surveyed by
DL Buckingham
C.S.

COUNTY SURVEYORS FILE DATA
DO NOT REMOVE FROM OFFICE

C.S. File No. 62/35-13

B-78