

#12

FILED *JK*

MAR 12 1986

COUNTY SURVEYOR
DOUGLAS COUNTY, ORE



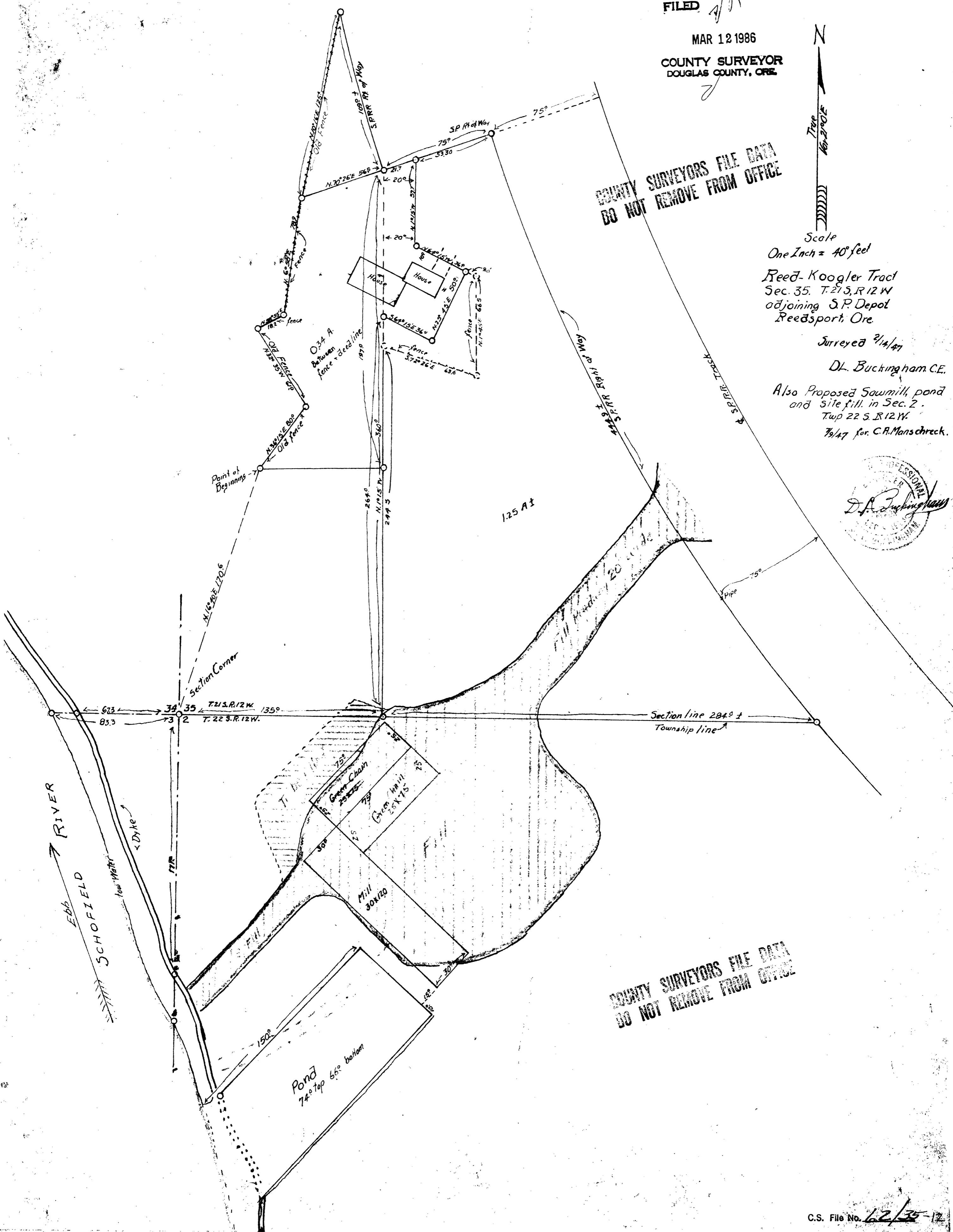
COUNTY SURVEYORS FILE DATA
DO NOT REMOVE FROM OFFICE

Scale
One Inch = 40 feet
Reed-Koogler Tract
Sec. 35, T.21 S., R.12 W.
adjoining S.P. Depot
Reedsport, Ore.

Surveyed 2/14/47

D.L. Buckingham C.E.

Also Proposed Sawmill pond
and site fill in Sec. 2.
Twp 22 S., R.12 W.
7/9/47 for C.A. Manschreck.



COUNTY SURVEYORS FILE DATA
DO NOT REMOVE FROM OFFICE

C.S. File No. 62/35-12