

FILED
MAR 12 1986
COUNTY SURVEYOR
DOUGLAS COUNTY, ORE

COUNTY SURVEYORS FILE DATA
DO NOT REMOVE FROM OFFICE

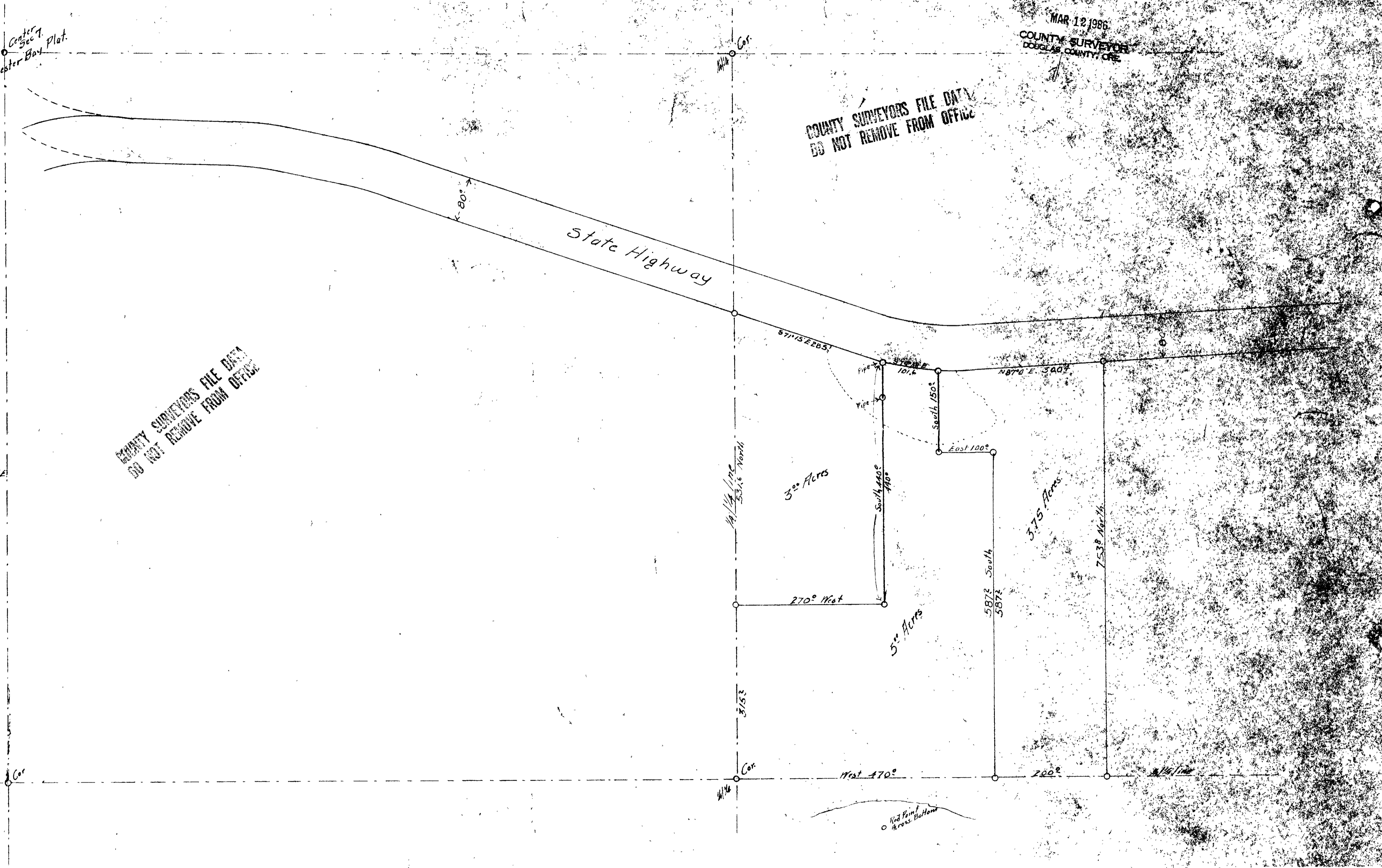
COUNTY SURVEYORS FILE DATA
DO NOT REMOVE FROM OFFICE

Center
Sec 7
Winchester Bay Plat.

N



Scale
one inch = 100 feet.
Note
1/4 mile assumed at 1320' ft.
on this map
6/1/50
D.L. Buckingham C.E.



Red Pine
Across Bottom

COUNTY SURVEYORS FILE DATA
DO NOT REMOVE FROM OFFICE