

#5

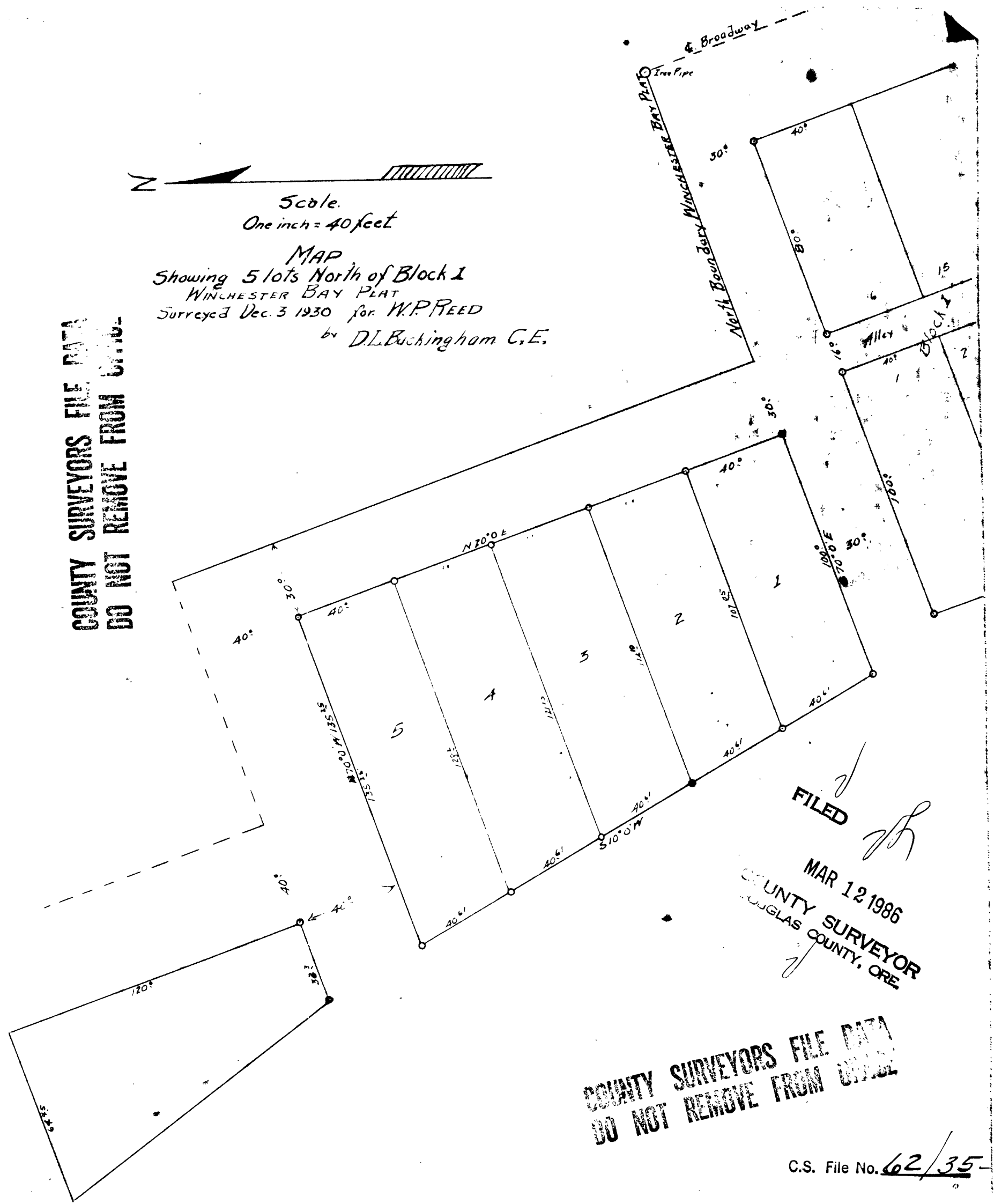
SEC 7 1/2 (BA)



Scale.
One inch = 40 feet

MAP
Showing 5 lots North of Block 1
WINCHESTER BAY PLAT
Surveyed Dec. 3 1930 for W.P. REED
by D.L. Buckingham C.E.

COUNTY SURVEYORS FILE DATA
DO NOT REMOVE FROM OFFICE



FILED

JH

MAR 12 1986

COUNTY SURVEYOR
DOUGLAS COUNTY, ORE

COUNTY SURVEYORS FILE DATA
DO NOT REMOVE FROM OFFICE

C.S. File No. 62/35-5

B-228