

FILED

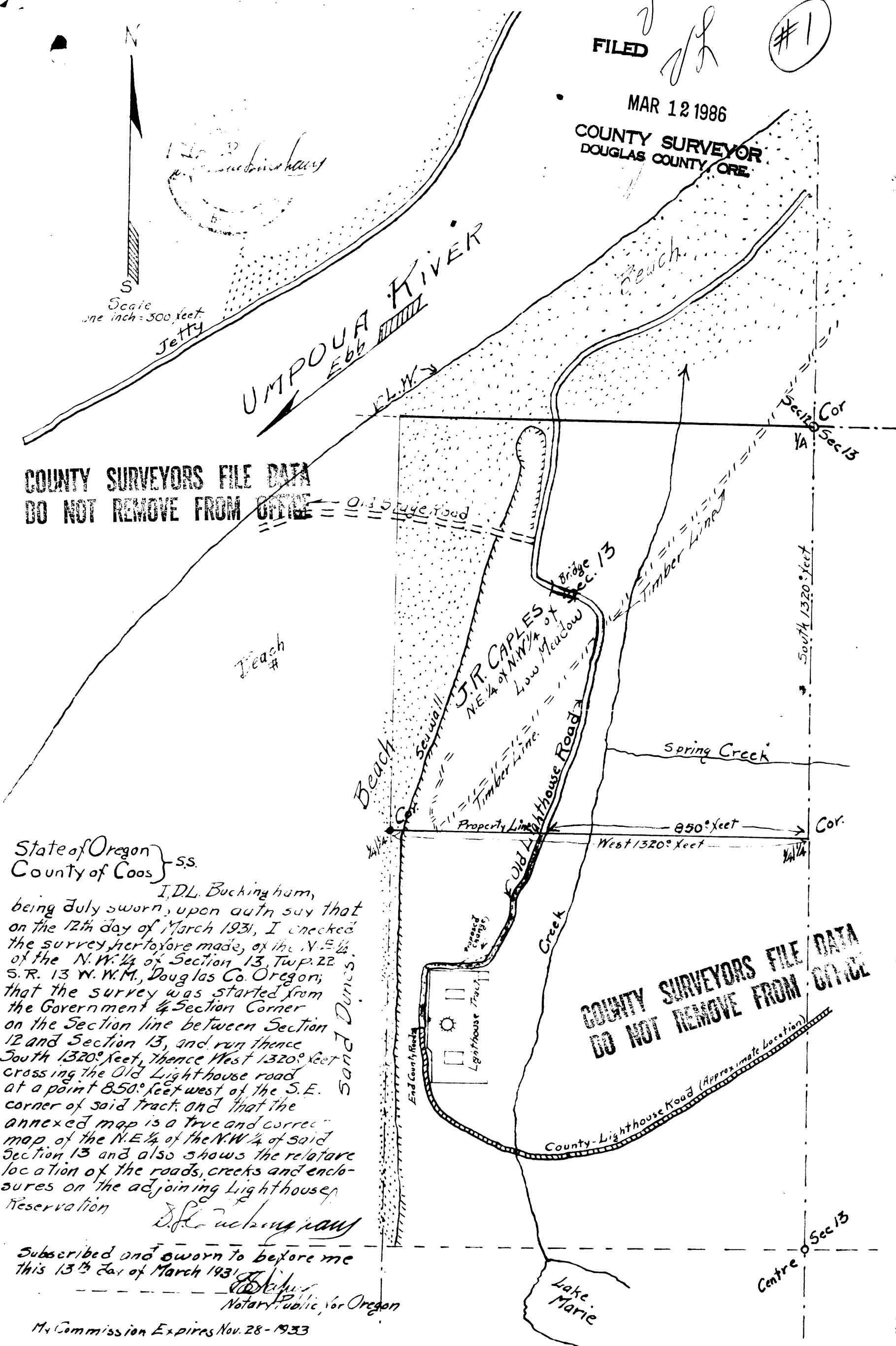
#1

MAR 12 1986

COUNTY SURVEYOR
DOUGLAS COUNTY, ORE.

Scale
one inch = 300 feet

COUNTY SURVEYORS FILE DATA
DO NOT REMOVE FROM OFFICE



State of Oregon } ss.
County of Coos }

I, D.L. Buckingham,
being duly sworn, upon oath say that
on the 12th day of March 1931, I checked
the survey heretofore made, of the N.E. 1/4
of the N.W. 1/4 of Section 13, Twp. 22
S., R. 13 W., Douglas Co. Oregon;
that the survey was started from
the Government 1/4 Section Corner
on the Section line between Section
12 and Section 13, and run thence
South 1320° feet, thence West 1320° feet
crossing the Old Lighthouse road
at a point 850° feet west of the S.E.
corner of said tract; and that the
annexed map is a true and correct
map of the N.E. 1/4 of the N.W. 1/4 of said
Section 13 and also shows the relative
location of the roads, creeks and encl-
osures on the adjoining Lighthouse
Reservation

D.L. Buckingham

Subscribed and sworn to before me
this 13th day of March 1931

[Signature]
Notary Public for Oregon

My Commission Expires Nov. 28 - 1933

COUNTY SURVEYORS FILE DATA
DO NOT REMOVE FROM OFFICE

C.S. File No. 62/35-1