

GOVERNMENT CORNER RESTORATION FORM

Township 33S Range 6W Sec. 4 County DOUGLAS

State OR Date 5/23/86 No. \_\_\_\_\_

Corner Designation

1/4 ONLY  
54

- Condition Report Only
- Not Found
- Renewed
- Unrecorded
- Surveyed In
- Referenced Out

Previous Renewals #3, #6, #17 (T33-6) (#70 T32-6)

MONUMENT DETAIL

Monument(s) Found: (Condition and Source)

1" I.P. FLUSH WITH GROUND SET BY  
WENDEROTH AS SOUTH WIT. COR.  
PER REN. #17. NO OTHER MONUMENTS  
FOUND. THE 1/4 COR. AND WEST  
WIT. CORNER'S SET BY WENDEROTH  
HAVE BEEN WASHED AWAY BY COW  
CREEK.

N/A

Accessories Found:

NO ORIG. BT'S OR BT'S PER REN #6 FD,

14" NOW 29" DIA. ASH WITH DOUBLE ROTTED OUT BLAZE FACING 1/4 COR POSITION  
(PER REN #3) BT IS ALSO SW BT TO WEST WIT. COR., WRONGLY  
IDENTIFIED AS A MAPLE, WITH A DOUBLE PARTIALLY HEALED BLAZE  
SCRIBING VISIBLE FACING POSITION OF WENDEROTH WEST WIT. COR.  
(PER REN #17). NW BT PER REN #3 GONE. SE BT  
TO WEST WIT. COR PER REN #17 DOWN AND WASHED OUT  
OF POSITION.

BT'S TO SOUTH WIT. COR. PER REN #17

36" NOW 43" DIA. MAPLE WITH A FULLY HEALED SINGLE BLAZE  
BEARS S24°06'E, 78.0' (REC. S24°06'E, 76.5' TO FACE).

36" NOW 36" DIA. CEDAR WITH A FULLY HEALED SINGLE BLAZE  
BEARS S58°05'W, 86.2' (REC. S58°05'W, 84.4' TO FACE).

#53 T.33-6 ✗  
 #173 T.32-6 ✗

C.S. File No. 62/34-8  
C

RENEWAL

Monument Set (Procedure and Description)

~~COMPUTED~~ N 1/4 COR. S 4 T 33 S R 6 W, ~~COMPUTED~~  
 AS PERPETUATED CORNER POSITION AS  
 DETERMINED BY EPPSTEIN AND WENDEROTH.  
 AS EVIDENCED BY SOUTH WIT. COR. (REN #17)  
 AND ASH (SW BT REN #3) DISTANCE TO ASH  
 APPEARS TO BE A FACE MEASUREMENT.

NEW WEST WIT. COR. PLACED ON A LINE  
 BETWEEN S 1/4 S 33 T 32 S R 6 W AND COMPUTED  
 POSITION OF N 1/4 S 4 T 33 S R 6 W.

A DCSO BC/I.P. PROTRUDES 4 IN.  
 ABOVE GROUND.

THE COMPUTED POSITION FOR N 1/4 S 4  
 BEARS EAST, 70.0 FT.

Monument Detail

DOUGLAS COUNTY SURVEYORS  
 T 33 S  
 EAST  
 W.C. TO COR.  
 1/4 S 4 70.0  
 FT  
 ONLY  
 R 6 W  
 1986

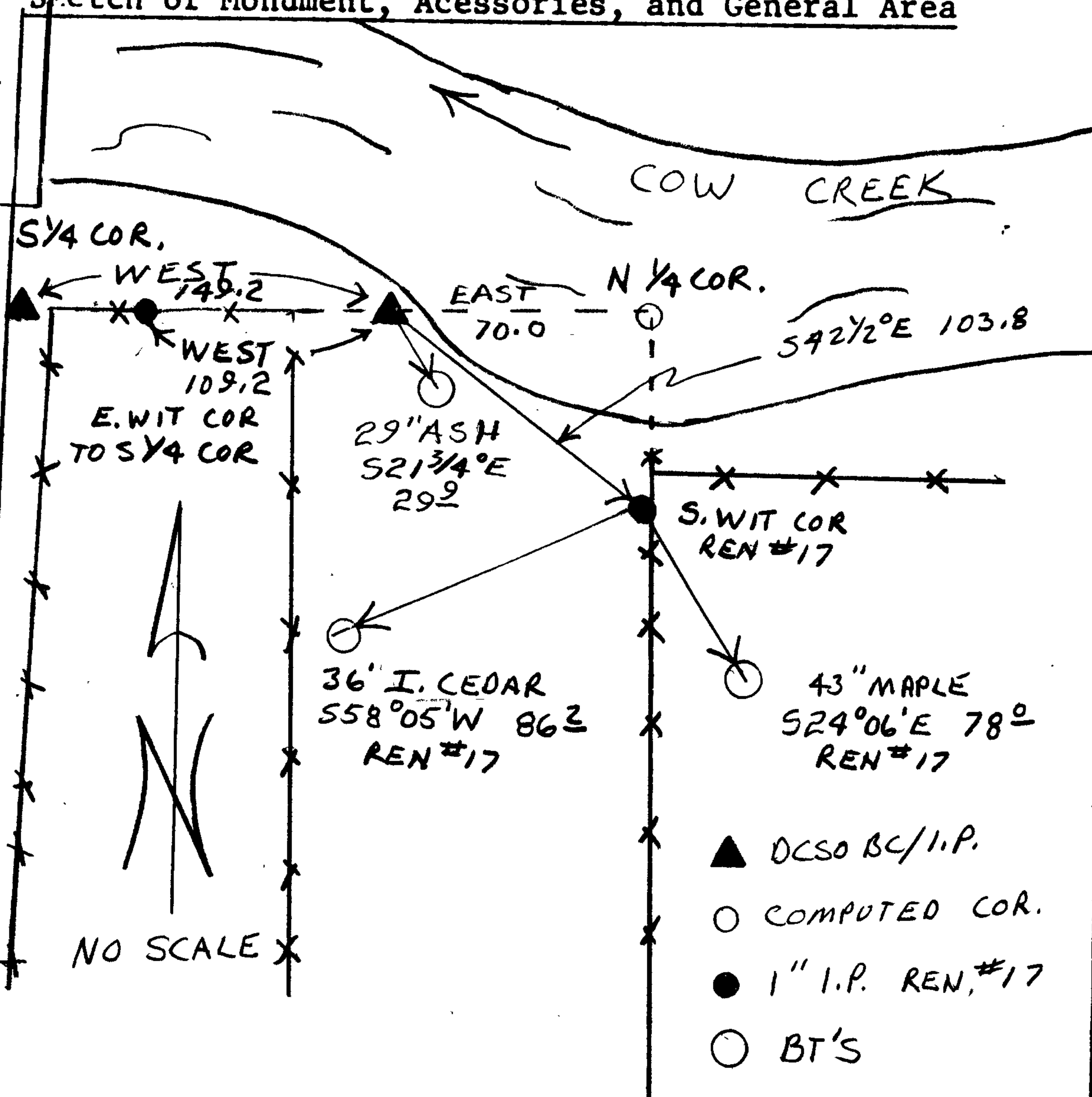
New Accessories

29" ASH PREVIOUSLY SCRIBED BY EPPSTEIN AND WENDEROTH, BEARS S 21 3/4° E, 29.9 FT

S 1/4 S 33 T 32 S R 6 W (DCSO BC/I.P.) BEARS WEST, 149.2 FT

S. WIT. COR. (1" I.P. REN #17) BEARS S 42 1/2° E, 103.8 FT

Sketch of Monument, Accessories, and General Area



Location & Comments

SEE DCSO MONUMENT RECOVERY  
 QUAD BOOKS FOR COORDINATE  
 INFORMATION.

Comp. Declin. 18 1/2° E  
 Agency DCSO  
 Party Chief RANDALL W SMITH  
 Notekeeper STEPHEN J FLAUSE  
 Witnesses

Address

Surveyor's Seal

REGISTERED  
 PROFESSIONAL  
 LAND SURVEYOR

*Larry E. Monrean*

OREGON  
 JULY 13, 1979  
 LARRY E. MONREAN  
 #1830