

GOVERNMENT CORNER RESTORATION FORM

Township 30S Range 2W Sec. 18 County DOUGLAS

State OREGON Date JUNE 12, 1986 No. _____

Corner Designation

Condition Report Only
 Not Found
 Renewed
 Unrecorded
 Surveyed In
 Referenced Out

Previous Renewals # 123, #

Monument(s) Found: (Condition and Source)

ORIGINAL CORNER TREE A CEDAR, 48
 INS. DIAM. NOW A 55 INCH D.B.H CEDAR
 WITH APPARENT HEALED BLAZES ON
 NORTH AND SOUTH FACE. A 2 3/8 INCH DIAM.
 BRASS CAP MARKED AS AT RIGHT ON A
 1 1/4 INCH O.D IRON PIPE FIRMLY SET AND
 LEANING 6 INCHES NORTHWEST FROM PLUMB
 PROTRUDING 14 INCHES FROM GROUND ON
 NORTH WEST EDGE OF CORNER TREE ROOT
 CROWN. B.C. AND PIPE SET IN RENEWAL #123.

CORNER TREE HAS SEVERAL TIMBER
 CRUISER, AND SIMILAR, MARKS IN ITS BARK.

Accessories Found:

EVIDENCE OF TWO ORIGINAL BEARING TREES FOUND. AN ORIGINAL FIR
 20 INS. DIAM. NOW A FALLEN AND ROTTEN 24 INCH DIAMETER FIR WITH A STUMP
 HOLE BEARING N01°E, 19 1/2 FEET DISTANT (AS PER RECORD) NO SCRIBING VISIBLE.
 AN ORIGINAL FIR 20 INS. DIAM. NOW A 26 INCH D.B.H. 15 FOOT TALL FIR SNAG
 WITH PARTIAL ILLEGIBLE SCRIBING VISIBLE IN A PREVIOUSLY OPENED BLAZE
 BEARS S 62° E, 22 1/4 FT. DISTANT (AS PER RECORD). WE DO NOT AGREE WITH DISTANCE
 RECORDED IN MAP FILE M100-7B TO THE SE PT.

TWO BEARING TREES FROM RENEWAL # 123 ARE FOUND WHICH ARE
 IN REFERENCE TO THE BRASS CAP MONUMENT NOTED ABOVE AND NOT TO
 THE TRUE CORNER POSITION OCCUPIED BY THE 55 INCH CEDAR.
 A 13" MAPLE NOW A 13 INCH D.B.H. MAPLE WITH THE SCRIBING
 1/4 S 19 CS 13T VISIBLE ON A PARTIALLY HEALED DOUBLE BLAZE BEARS
 S 24° W, 31 1/4 FT DISTANT (AS PER RECORD). A 9" D. FIR NOW A 14 INCH
 D.B.H. DOUGLAS FIR WITH A FULLY HEALED DOUBLE BLAZE BEARS N 20° W,
 19 1/2 FEET DISTANT (AS PER RECORD). BEARINGS AND DISTANCES ARE MEAS-
 URED FROM PLUMB POSITION OF B.C. MONUMENT. WE DO NOT AGREE WITH DISTANCES
 TO THESE BEARING TREES AS RECORDED IN MAP FILE M100-7B ; THE DISTANCE TO THE
 NORTHWEST BT WOULD AGREE WELL WITH THE BRASS CAP BUT NOT THE PLUMB
 POSITION OF THE MONUMENT.

MONUMENT DETAIL

COUNTY SURVEYORS OFFICE

T30S R2W

1/4 S18
 S19

1968

RENEWAL

Monument Set (Procedure and Description)

Monument Detail

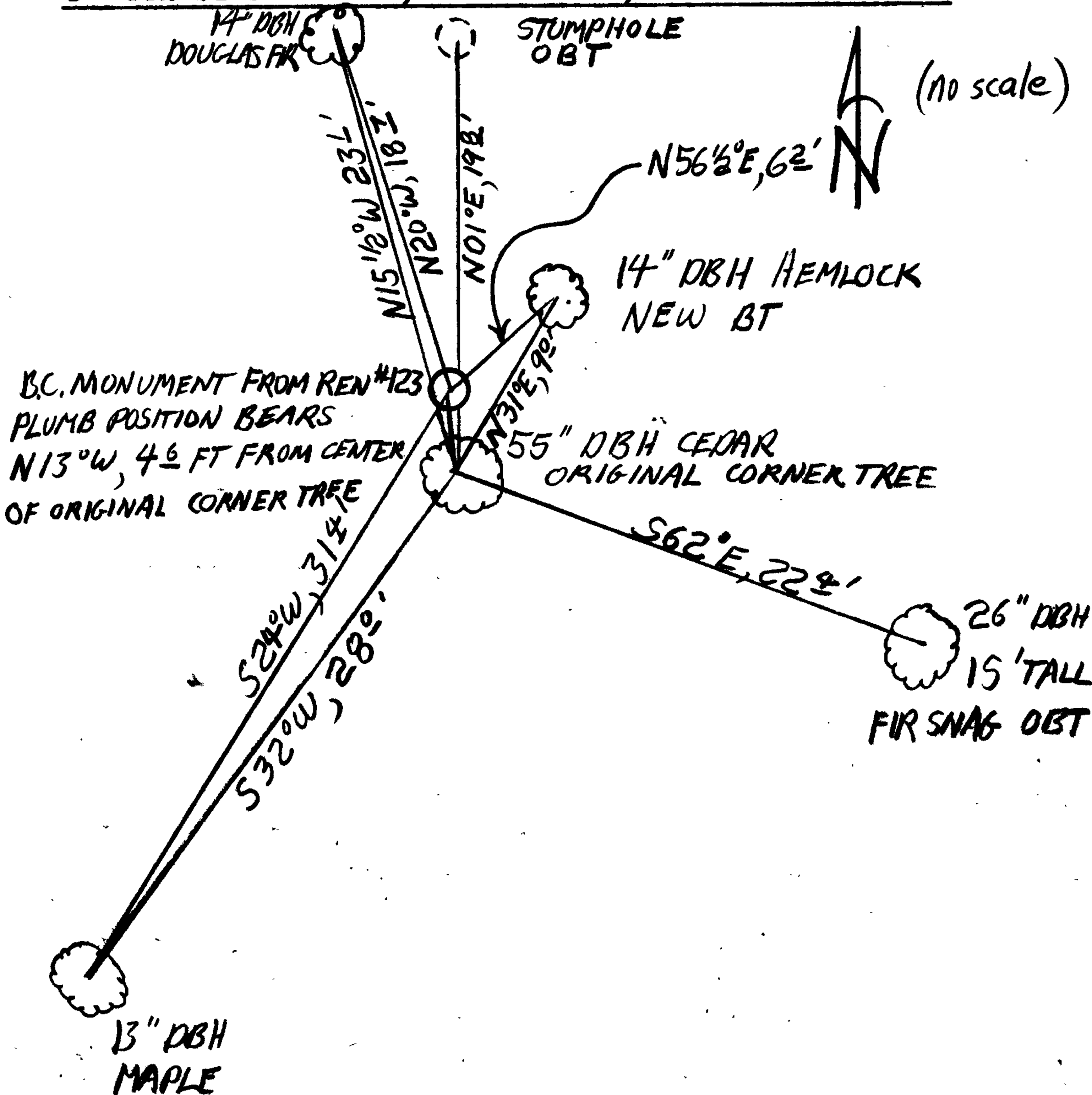
THE BRASS CAP MONUMENT FROM RENEWAL #123 IS STAMPED "W. C. TO COR. S 13° E 4.6 FT. 1986" TO INDICATE ITS MEASURED BEARING AND DISTANCE FROM ITS PLUMB POSITION TO THE CENTER OF THE CORNER TREE AS DETERMINED BY INDIRECT MEASUREMENTS (SEE FILE). WE AGREE REASONABLY WITH THE DISTANCE BUT NOT THE BEARING BETWEEN THE MONUMENT AND THE CORNER TREE AS RECORDED IN MAP FILE M100-78.

New Accessories

THE BEARING TREES FROM RENEWAL #123 ARE TIED TO THE CORNER TREE LOCATION. THE FOLLOWING BEARINGS AND DISTANCES ARE OBSERVED. THE 13 INCH D.B.H. MAPLE FROM RENEWAL #123 BEARS S 32° W, 28° FEET DISTANT. THE 14" D.B.H. FIR FROM RENEWAL #123 BEARS N 15 1/2° W, 23 1/2 FEET DISTANT.

A NEW BEARING TREE IS TIED TO THE BRASS CAP MONUMENT AND THE CORNER TREE THIS IS A 14 INCH D.B.H. HEMLOCK SCRIBED "1/4 S 18 C.S. BT" ON A DOUBLE BLAZE. BEARING FROM THE PLUMB POSITION OF THE BRASS CAP MONUMENT N 56 1/2° E, 6 1/2 FEET DISTANT AND BEARING FROM THE CORNER TREE N 31° E, 9 FEET DISTANT.

Sketch of Monument, Accessories, and General Area



Location & Comments

MONUMENT LIES 60 ± FT SOUTH OF END OF SKID ROAD, SEE AERIAL PHOTO PLOT 1982-83 PHOTOS.

TO REACH HEAD OF SKID ROAD TAKE CORN CREEK ROAD NORTH FROM THE SOUTH UMPQUA HIGHWAY. TAKE INTERSECTING ROAD TO EAST ENTERING COFFEE CREEK DRAINAGE. SKID ROAD SE

COR. SEC 18. Comp. Declin. 18 1/2° E

Agency DCSO

Party Chief S.O. FLAUSE

Notekeeper R.W. SMITH

Witnesses Stephen John Flann

Surveyor's Seal

REGISTERED
PROFESSIONAL
LAND SURVEYOR

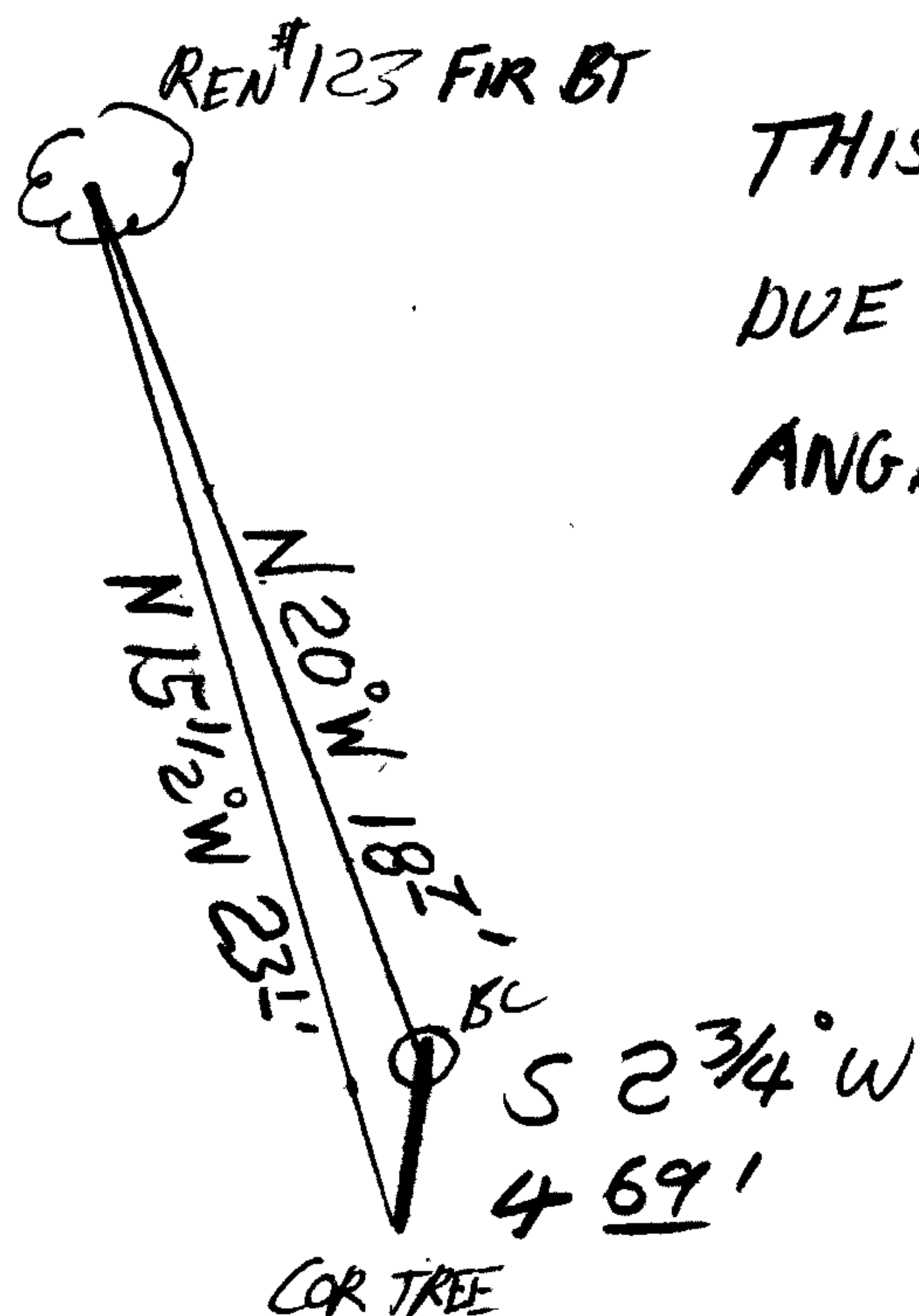
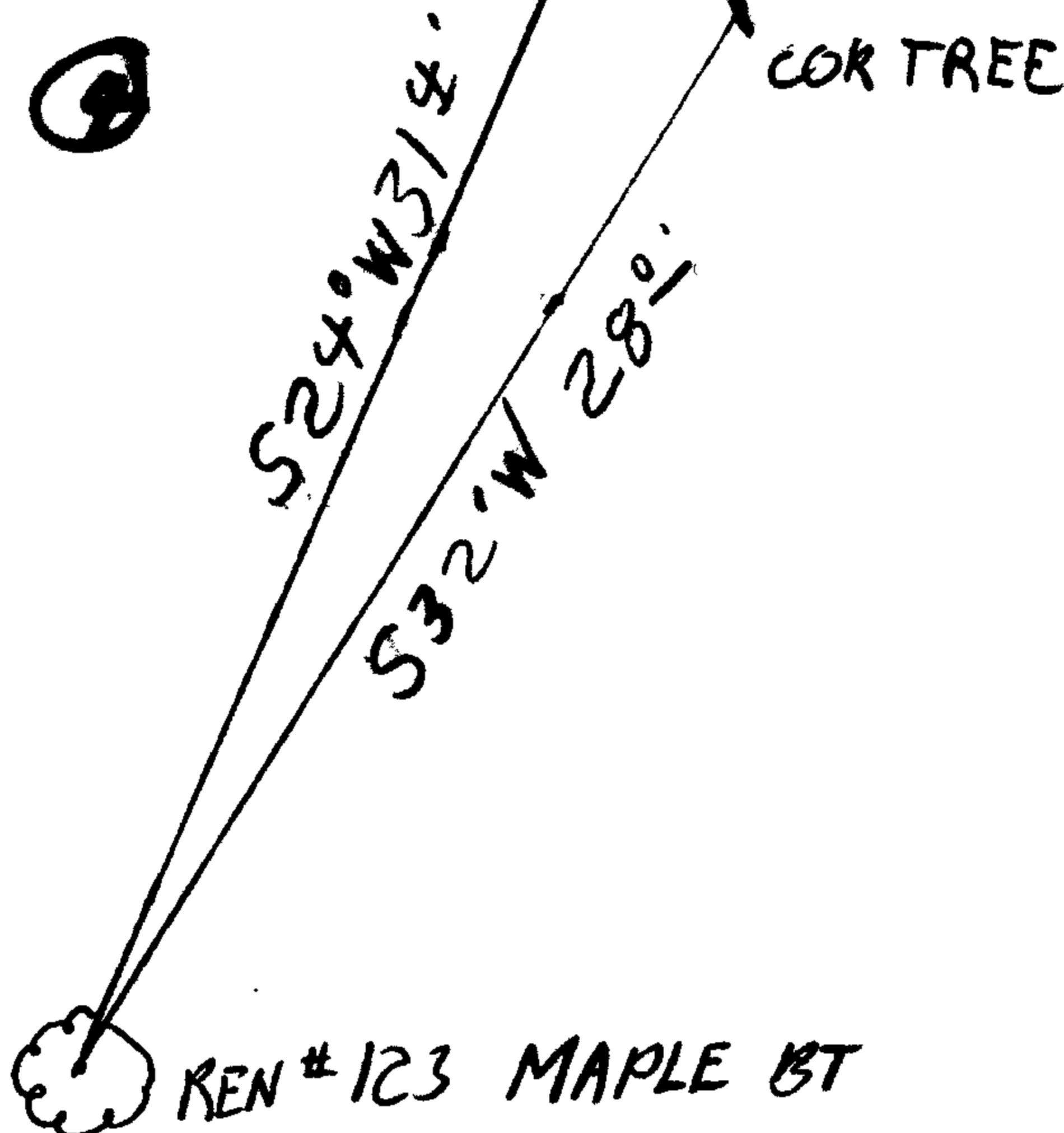
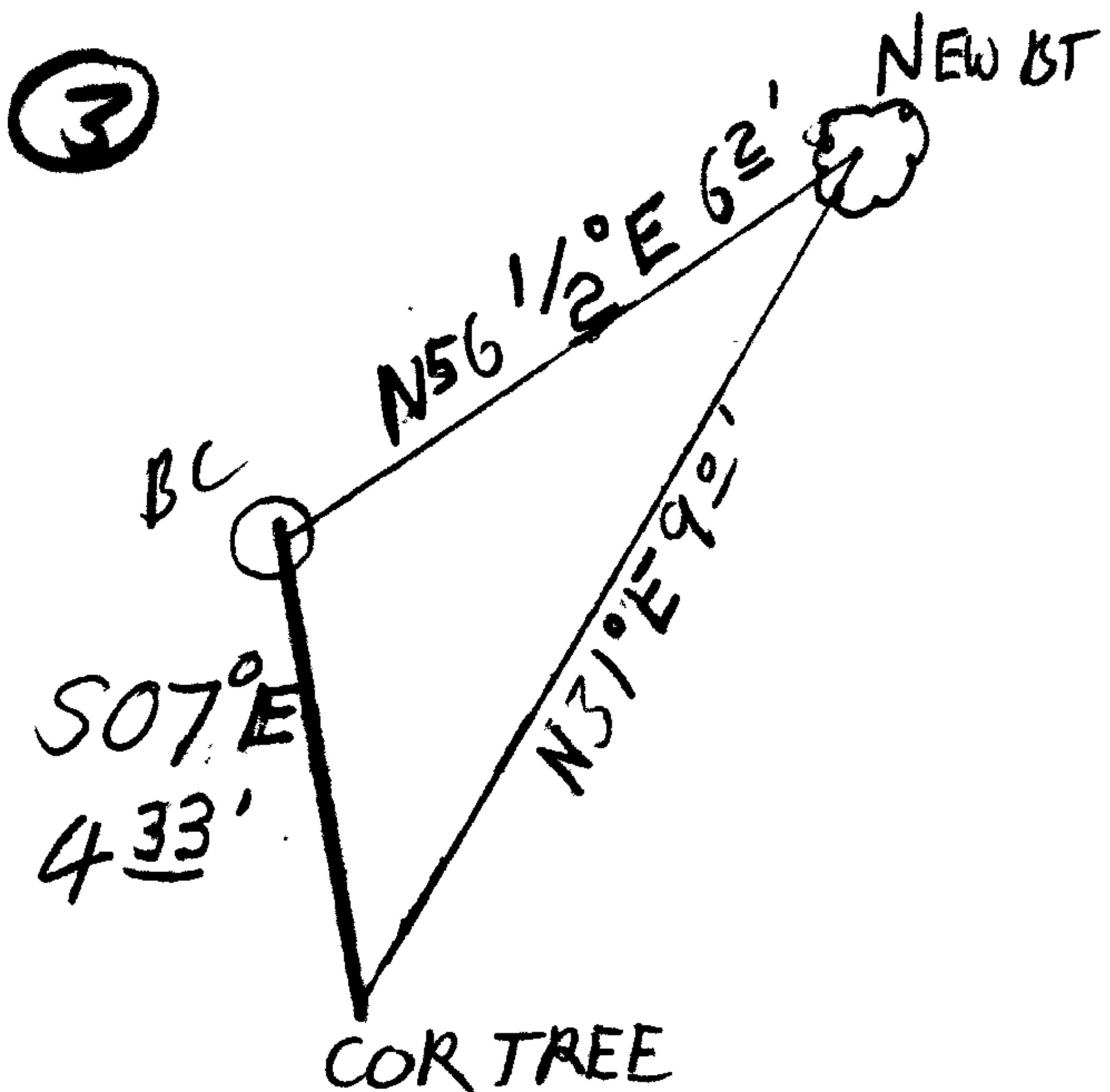
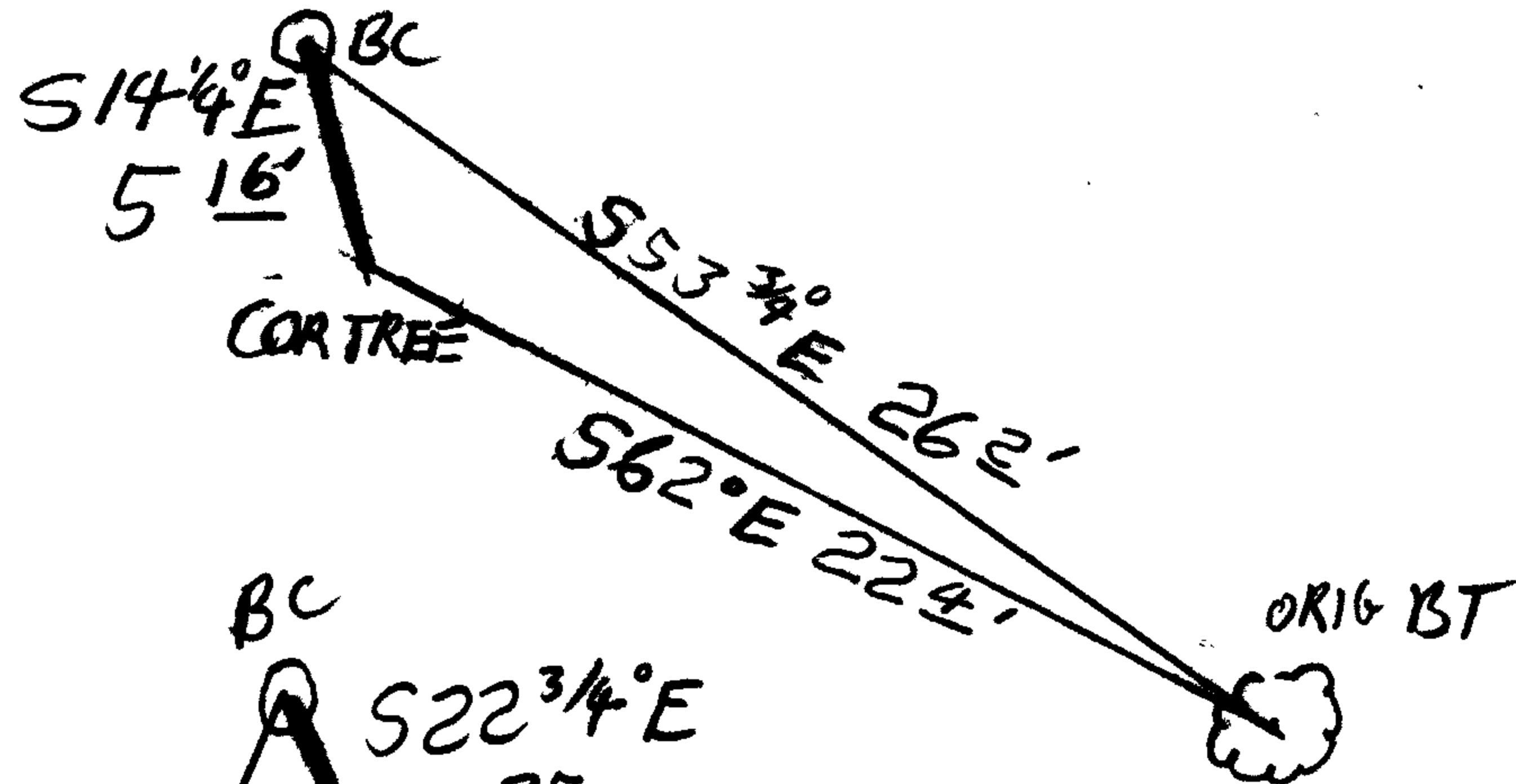
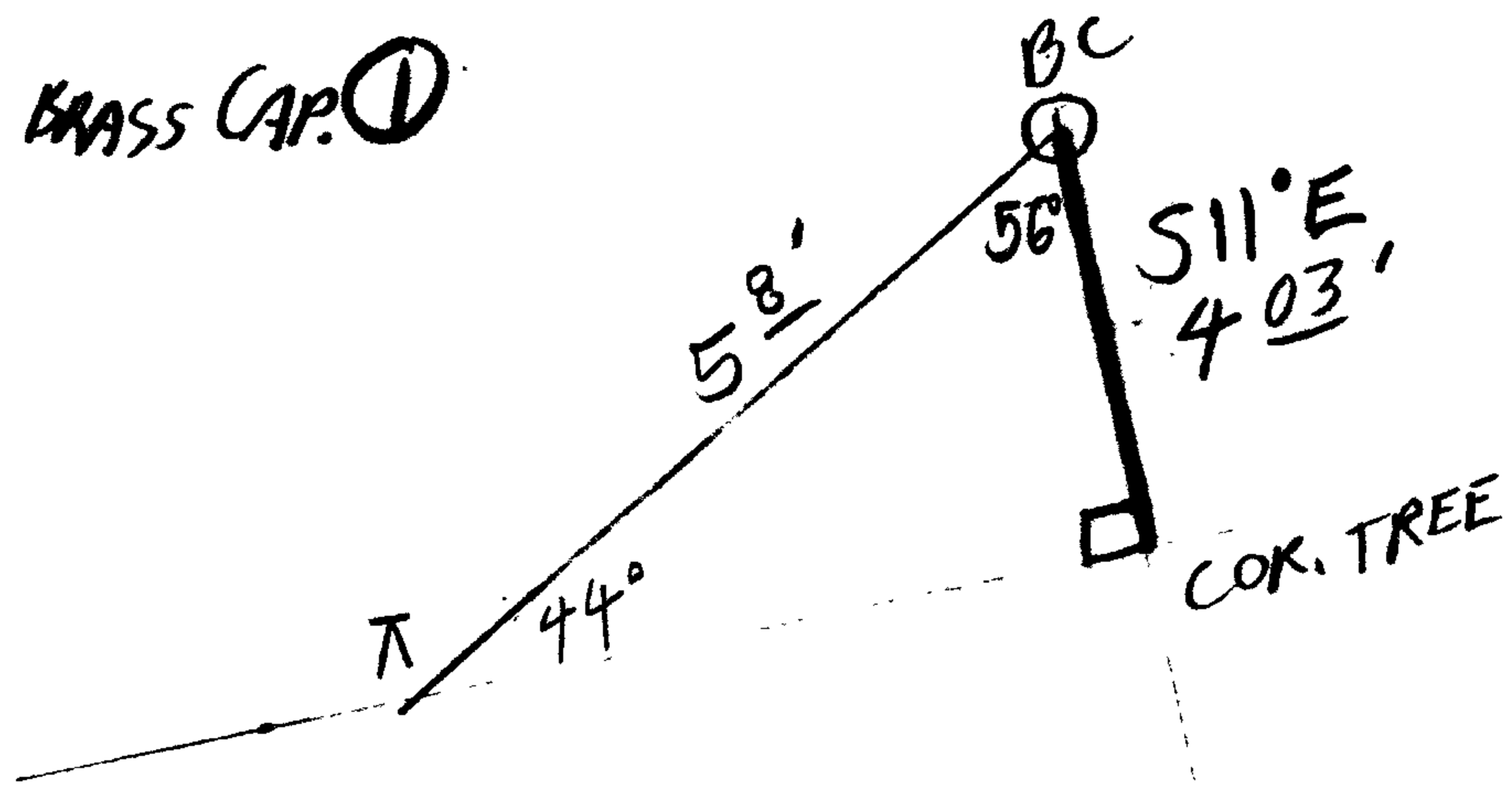
Larry E. Monrean

OREGON
JULY 13, 1979
LARRY E. MONREAN
#1830

T. 30-2

1/4 18/19

BRASS CAP STAMPED TO SHOW AVERAGE OF BEARING AND DISTANCE BETWEEN CORNER TREE AND BC AS DETERMINED FROM OBS. 1 & 2. CAP STAMPED S13°E, 46 FT. LATER CHECK OF AVERAGE OF OBS. 1-4 INDICATES REASONABLE AGREEMENT WITH BEARING AND DIST. STAMPED ON BRASS CAP. ①



THIS OBS. NOT AVERAGED WITH ABOVE DUE TO POOR SIGHTING CONDITIONS AND SHALLOW ANGLES.

CS62/34-5