

GOVERNMENT CORNER RESTORATION FORM

Township 29 S Range 8 W Sec. 21 County Douglas

State OREGON Date 3-06-86 No. _____

Corner Designation

$\frac{1}{4}$ S 21 | S 22

- _____ Condition Report Only
- _____ Not Found
- Renewed
- _____ Unrecorded
- _____ Surveyed In
- _____ Referenced Out

Previous Renewals #26 & #85

MONUMENT DETAIL

Monument(s) Found: (Condition and Source)
 PER RENEWAL #85 (1958 BYRON) A 1" X 36" GALV. IRON PIPE WITH ATTACHED BRASS CAP MARKED
 CAP HAS BEEN PUSHED OVER APPARENTLY DURING FIRE TRAIL CONSTRUCTION.
 THE MONUMENT IS STILL IN GOOD CONDITION WE USE THE POSITION OF THE BASE OF THE MONUMENT AS THE CORNER LOCATION PERPETUATED BY RENEWAL #85
 FROM THIS POSITION A WOODEN NAIL TACK BEARS N 40° W 1 1/2 FEET
 ORIGINAL MONUMENT NOT FOUND FROM THE POINT USED AS 1958 PERPETUATION REFERENCES ARE TIED AS FOLLOWS

COUNTY SURVEYOR'S

$\frac{1}{4}$ S 21 | S 22

T 29 S R 8 W

1958

Accessories Found:

ORIGINAL AT AN 18" FIR NOW A 30" D.B.H. STUMP 5 FEET TALL WITH SCRIBING " $\frac{1}{4}$ S" VISIBLE ON PREVIOUSLY OPENED BLAZE BEARS N 25° E 12 1/2 FEET TO CENTER 11 1/2 FEET TO FACE (REC. N 25° E 11 1/2 FEET) BLAZE ON S 54° W SIDE OF STUMP.

FROM RENEWAL #26 (1936 BOYER) A 40" FIR NOW A STUMP 36" DIAM 2 1/2 FEET TALL BARK SCRIBED "SBT" BEARS N 40° W 38 1/2 FEET, 36 1/2 FEET TO FACE (REC. 36 1/2 FEET), BLAZE ON S 5° E SIDE OF STUMP.

FROM RENEWAL #85

A 10" NOW 20" FIR WITH WELL HEALED DOUBLE BLAZE BEARS S 58° W 33 1/2 FT. (REC. S 57° W). BLAZE ON N 26° E SIDE OF TREE.

A 12" NOW 19" CEDAR WITH WELL HEALED DOUBLE BLAZE BEARS N 57 1/2° E 20 1/2 FEET (REC. N 59° E 21 1/2 FEET).

#199 X

C.S. File No. 62/34-4 C

RENEWAL

Monument Set (Procedure and Description)

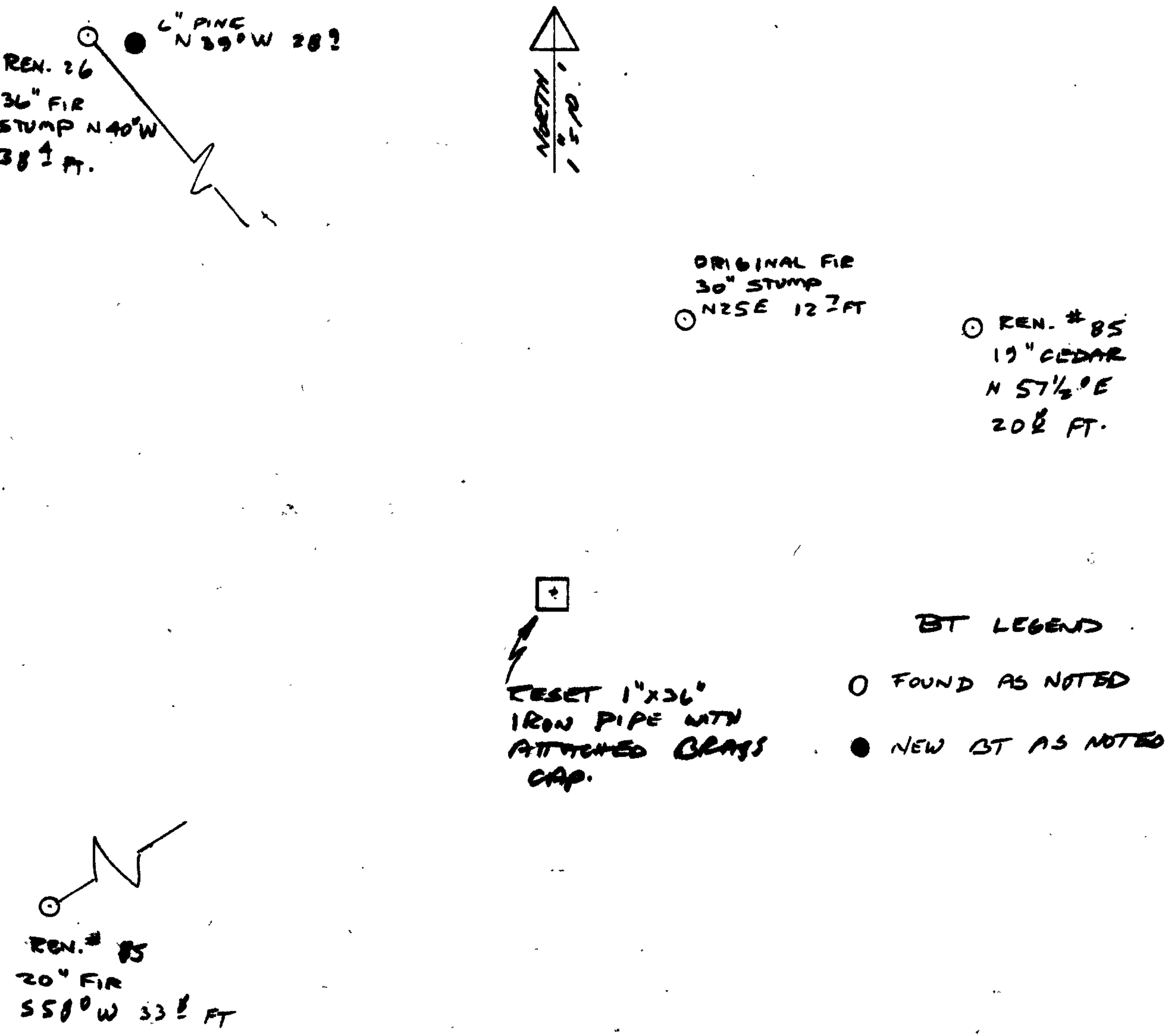
AT POSITION AS PREVIOUSLY DESCRIBED WE RESET
THE FOUND MONUMENT IN AN UPRIGHT POSITION.
WE ADD THE MARKS "RESET 1986" TO CAP.

Monument Detail

New Accessories

A 6" DIAM. PINE DOUBLE BLAZED AND SCRAPPED " X BT" BEARS N 39° W 28⁹ FEET.

Sketch of Monument, Accessories, and General Area



Location & Comments

LOCATED IN E-W CUTTING LINE AREA TO SOUTH HARVESTED

Comp. Declin. 18¹/₂° E
Agency DOUGLAS COUNTY SURVEYOR'S OFFICE
Party Chief LARRY E. MONREAN
Notekeeper " " "
Witnesses R. W. SMITH, S. J. FLAISE

Address RM. 20.5 JUSTICE BLDG. ROSEBURG, OR. 97470

Surveyor's Seal

REGISTERED PROFESSIONAL LAND SURVEYOR

Larry E. Monrean

OREGON
JULY 13, 1979
LARRY E. MONREAN
#1830