

R

GOVERNMENT CORNER RESTORATION FORM

Township 26S Range 5W Sec. 23 County DOUGLAS

State OR Date 2/27/86 No. _____

Rec'd
3/7/86

Corner Designation

$\frac{1}{4}$ $\frac{S23}{S26}$

- Condition Report Only
- Not Found
- Renewed
- Unrecorded
- Surveyed In
- Referenced Out

Previous Renewals #90

Monument(s) Found: (Condition and Source)

DCSO BC/I.P. 6 IN. BELOW
GROUND. (PER REN #90)

MONUMENT DETAIL

COUNTY SURVEYORS OFFICE

T 26S

$\frac{S23}{S26}$ R
5
W

1964

Accessories Found:

8" NOW 23" DIA. W. OAK WITH A PREVIOUSLY OPENED BLAZE
SCRIBE VISIBLE "1/4 S" BEARINGS AND DISTANCES NOT
CHECKED (REC. N76Y4°E, 699.6 FT) ORIG. BT

ORIG. SW BT NOT FOUND

BT'S AND 60'S PER REN #90

14" NOW 19" DIA. TRIPLE TRUNKED W. OAK (DIA. TAKEN ON SCRIBED SOUTH TRUNK)
WITH A FULLY HEALED DOUBLE BLAZE BEARS N66°W, 123.4 FT
(REC. N68°W, 123.4 FT).

18" NOW 23" DIA. W. OAK WITH A FULLY HEALED DOUBLE BLAZE
BEARS S87Y2°W, 182.9 FT. (AGREES WITH REC.).

3/4" I.P. AT SOUTH CORNER OF LOTS 7 + 8 "ECHO BEND SUBD."
BEARS S82Y2°W, 140.2 FT (AGREES WITH REC.).

3/4" I.P. AT SOUTH CORNER OF LOTS 6 + 7 "ECHO BEND SUBD"
BEARS S7Y2°W, 96.8 FT (AGREES WITH REC.).

#155 X

RENEWAL

Monument Set (Procedure and Description)

NONE

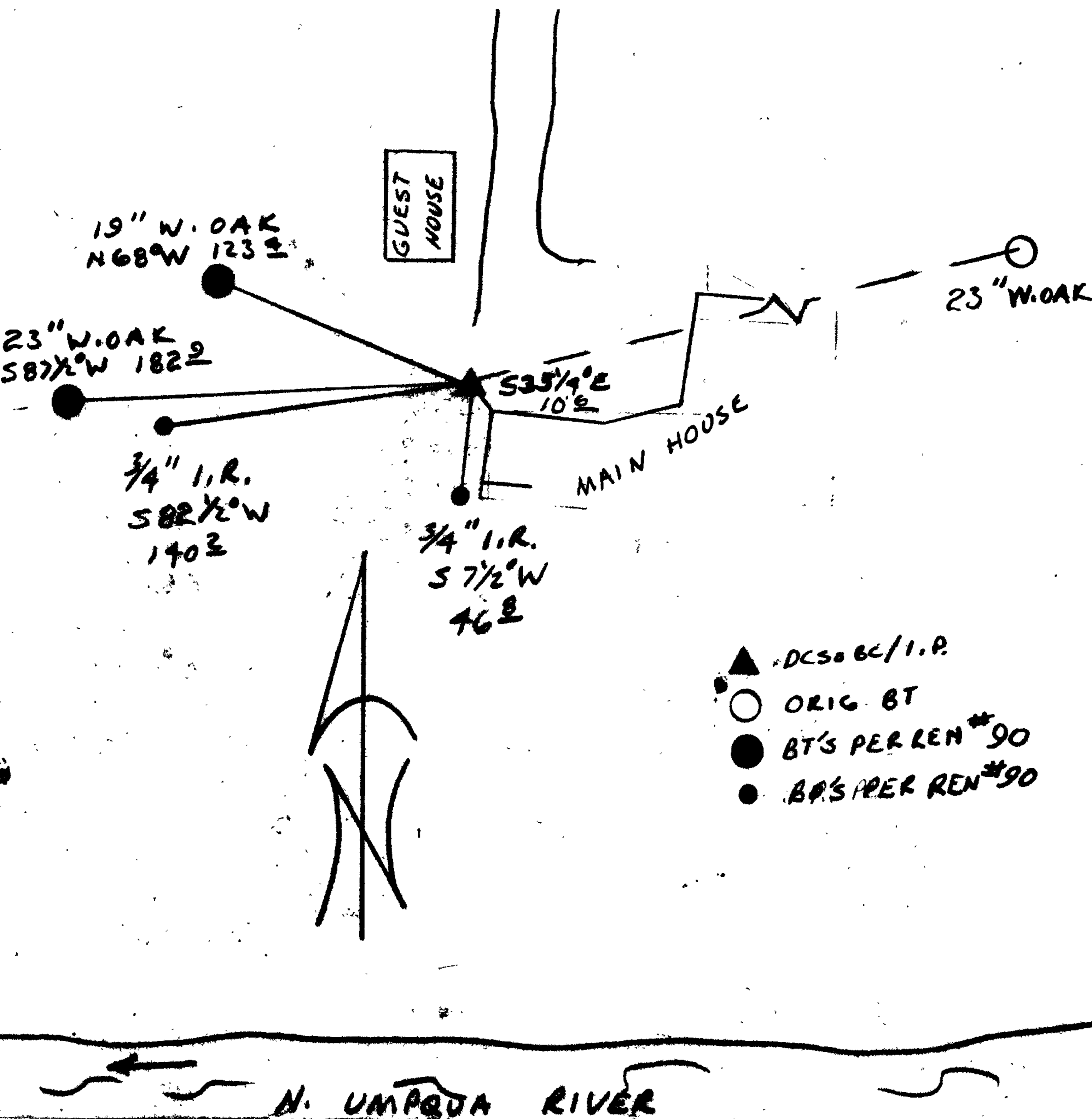
Monument Detail

N/A

New Accessories

NORTH WEST CORNER OF CONCRETE FOUNDATION OF HOUSE
BEARS $S35\frac{1}{4}^{\circ}E$, 10.6 FT.

Sketch of Monument, Accessories, and General Area



Location & Comments

Comp. Declin. $18\frac{1}{2}^{\circ}E$
Agency DCSO
Party Chief RANDALL W SMITH
Notekeeper STEPHEN J FLAUSE
Witnesses

Surveyor's Seal

REGISTERED
PROFESSIONAL
LAND SURVEYOR

Larry E. Monrean

OREGON
JULY 13, 1979
LARRY E. MONREAN
#1830