

RENEWAL

Monument Set (Procedure and Description)

Monument Detail

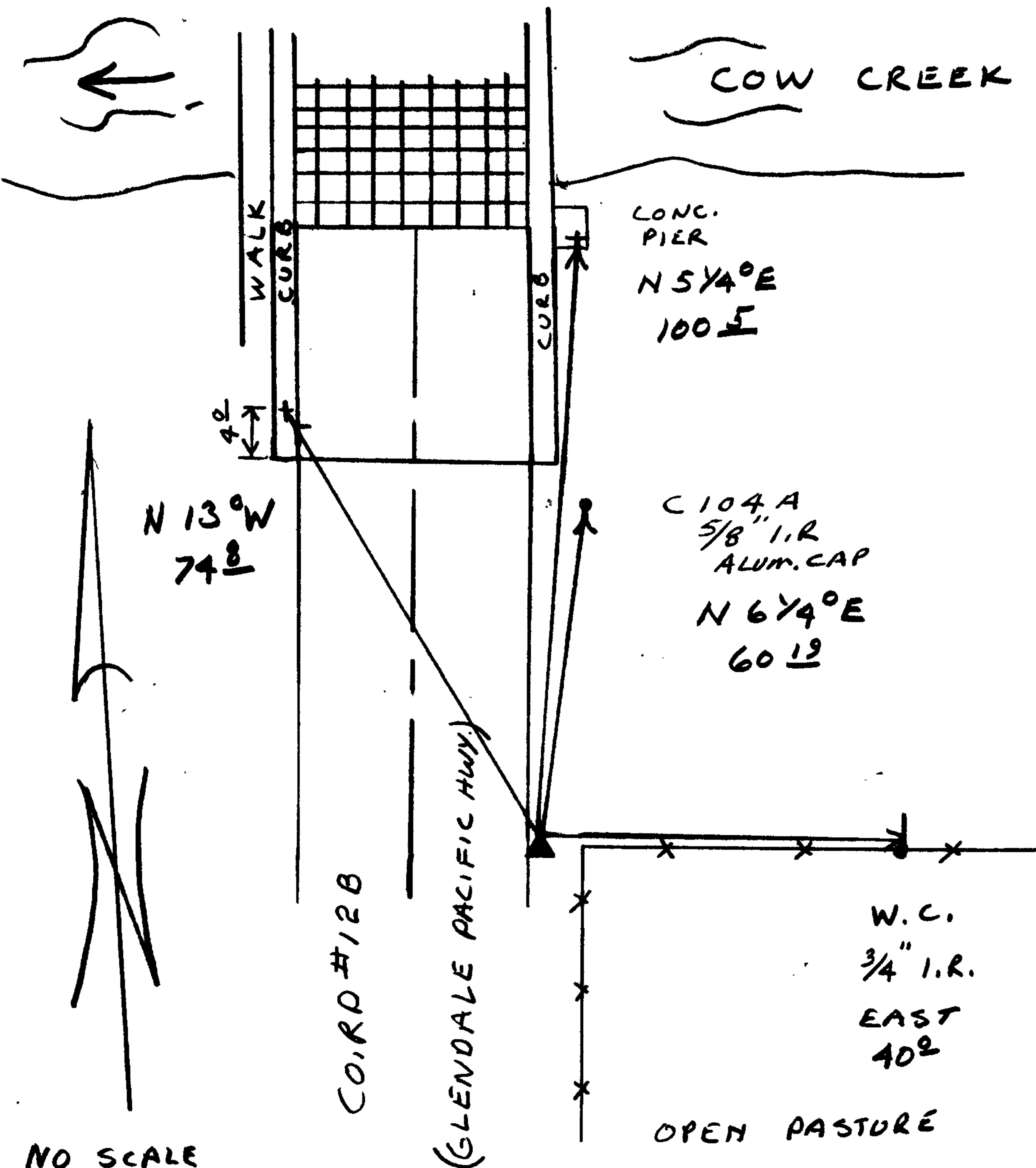
NONE

N/A

New Accessories

5/8" I.R. WITH WITH DCSO ALUM CAP STAMPED "C104 A 1985"
BEARS N 67 1/4° E, 60.19 FT.

Sketch of Monument, Accessories, and General Area



Location & Comments

CORNER LIES IN SHOULDER OF CO. RD. #126 1/2 FT EAST OF EAST EDGE OF PAVEMENT, APPROX 65 FT SOUTH OF BRIDGE OVER COW CREEK. CORNER IS TIED INTO STATE PLANE COORDINATES.

Comp. Declin. 18 1/2° E
Agency DCSO
Party Chief RANDALL W SMITH
Notekeeper Randall W Smith
Witnesses STEPHEN J FLAUS

Address

Surveyor's Seal

REGISTERED PROFESSIONAL LAND SURVEYOR

Larry E. Monrean

OREGON
JULY 13, 1979
LARRY E. MONREAN
#1830

NO SCALE

RWS 2/13/86

C103

S ~~X~~ 8° 21' 46" E W

C104A

2° 20' 34" RT

S 10° 42' 20" W

324.74'

PK/AC (4+00)

C104A

110° 51' 38" RT

N 60° 46' 36" W

27.97'

BO+

C104A

116° 53' 37" RT

N 54° 44' 37" W

16.12'

PK/AC (7+32.91)

C104A

173° 50' 42" RT

N 2° 12' 28" E

205.89'

HOLE IN AC

C104A

177° 22' 23" RT

N 5° 44' 09" E

40.33'

+ (CONC. OF BRIDGE PIER)

C104A

324° 21' 08" RT

S 27° 17' 06" E

68.51'

W.C.

C104A

359° 54' 58" RT

S 8° 16' 44" W

60.19'

1/4 S 3

INV PK/AC (4+00) ——— PK/AC 7+32.91

C.S. File No. 62/31-17

BEARING	DISTANCE	LATITUDE	DEPARTURE	NORTH	EAST	STATION
S 10 * 42 ' 20.0 " W	324.740	- 319.087	- 60.324	404794.085 404474.997	1216937.515 1216877.190	C 104A 4+00

BEARING	DISTANCE	LATITUDE	DEPARTURE	NORTH	EAST	STATION
N 60 * 46 ' 36.0 " W	27.970	13.655	- 24.410	404794.085 404807.740	1216937.515 1216913.104	C 104A B0 +

BEARING	DISTANCE	LATITUDE	DEPARTURE	NORTH	EAST	STATION
N 54 * 44 ' 37.0 " W	16.120	9.305	- 13.163	404794.085 404803.390	1216937.515 1216924.351	C 104A 7+32.91

BEARING	DISTANCE	LATITUDE	DEPARTURE	NORTH	EAST	STATION
N 2 * 12 ' 28.0 " E	205.890	205.737	7.931	404794.085 404999.822	1216937.515 1216945.446	C 104A HOLE AC

BEARING	DISTANCE	LATITUDE	DEPARTURE	NORTH	EAST	STATION
N 5 * 44 ' 9.0 " E	40.330	40.128	4.030	404794.085 404834.213	1216937.515 1216941.545	C 104A +

BEARING	DISTANCE	LATITUDE	DEPARTURE	NORTH	EAST	STATION
S 27 * 17 ' 6.0 " E	68.510	- 60.887	31.406	404794.085 404733.197	1216937.515 1216968.921	C 104A W.C.

BEARING	DISTANCE	LATITUDE	DEPARTURE	NORTH	EAST	STATION
S 8 * 16 ' 44.0 " W	60.190	- 59.562	- 8.666	404794.085 404734.522	1216937.515 1216928.848	C 104A 1/4 S3