

GOVERNMENT CORNER RESTORATION FORM

Township 30S Range 5W Sec. 25 County DOUGLASState OR Date JAN 6, 1986 No. _____Corner Designation $\frac{1}{4}$ 526 | 525Previous Renewals #140, #226

Monument(s) Found: (Condition and Source)

A RECENTLY SET $\frac{5}{8}$ " I.R. PROTRUDES
4" ABOVE GROUND (SOURCE UNKNOWN)
AND A DCSO I.P. WITH BRASS CAP
OUT OF GROUND UNDER $\frac{1}{2}$ " IN. OF
SOIL (PER REN #226) MARKED
AS NOTED

Accessories Found:

ORIG. BT
24" NOW 40" DIA OAK WITH A ROTTED BURNT OUT BLAZE
BEARS S 45° E, 82.5 FT (AGREES WITH RECORD) ORIG. BT
(FD 1963 BT TAG ON TREE)
REN #140

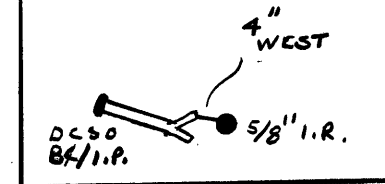
30" B.OAK GONE CAT WORK IN AREA

14" W. OAK POSSIBLY; DOWN BURNT AND ROTTED IN WIDE
AREA NO SCRIBE FOUND ORIGINAL POSITION INDETERMINABLE.

REN #226

9" W. OAK GONE DEPRESSION IN GROUND BEARS
N 51° E, 25.9 FT (AGREES WELL WITH REC.)

Condition Report Only
 Not Found
 Renewed
 Unrecorded
 Surveyed In
 Referenced Out

MONUMENT DETAIL

COUNTY SURVEYORS OFFICE

T 30 S

S 26 | S 25

R 5 W

1963

#304 X

C.S. File No. 62/31-16 c

RENEWAL

Monument Set (Procedure and Description)

POSITION OF 5/8" I.R. ACCEPTED AS CORNER LOCATION THIS POSITION AGREES WITH ORIG SE BT AND NE BT'S PER REN #1 #226 DEPRESSION IN GROUND. BC/I.R. PER REN #226 FOUND OUT OF GROUND 4 IN FROM I.R.

RESET DC SO 1" X 3/16" I.R. PROTRUDES 7/16" ABOVE GROUND WITH 5/8" I.R. PROTRUDING 5/16" ABOVE GROUND ALONG NORTH EDGE OF BC.

Monument Detail

COUNTY SURVEYORS OFFICE
T 305
RE SET
526 | 525
19 | 86
R5W
1963

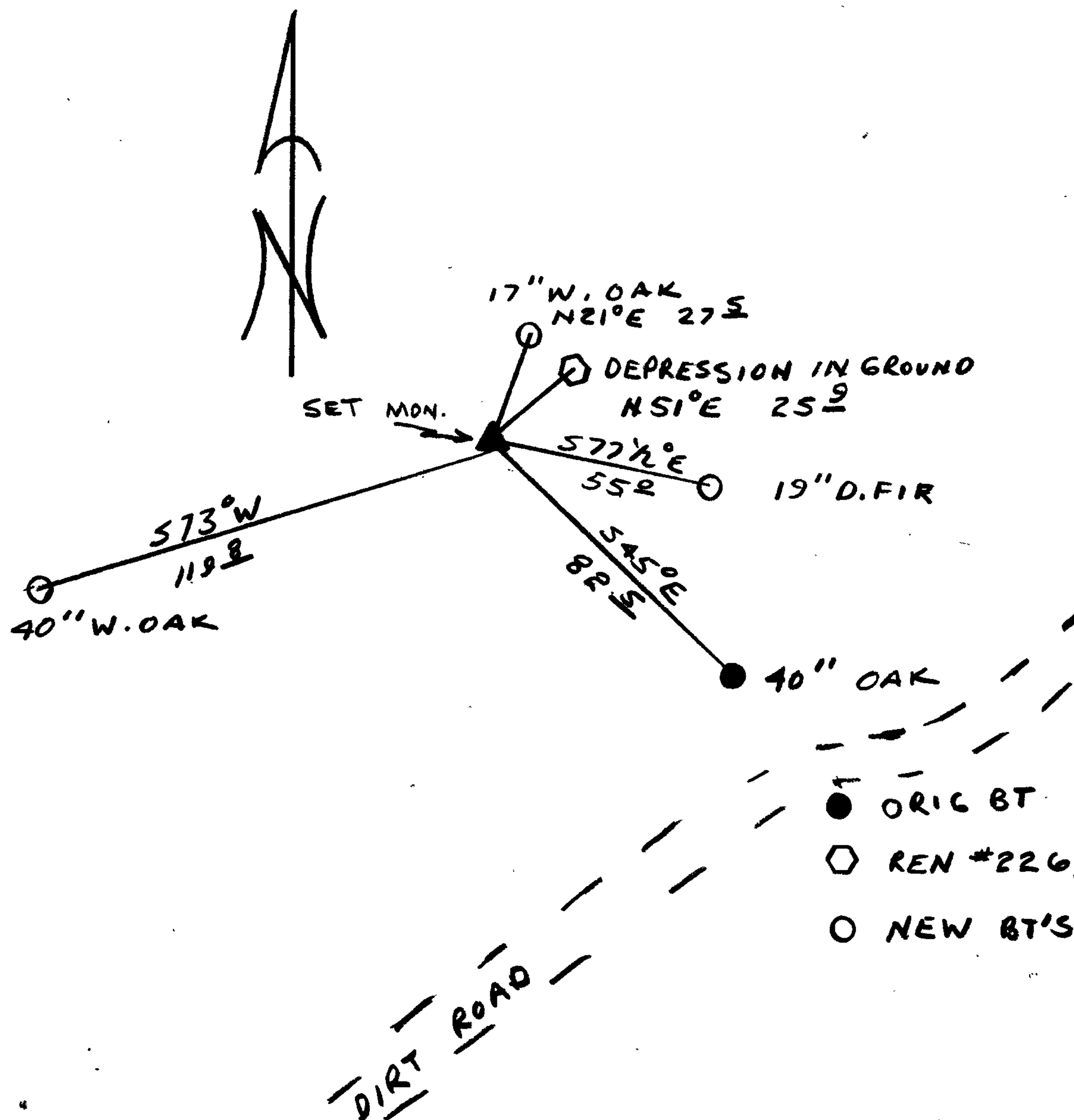
New Accessories

19" D. FIR DOUBLE BLAZED AND SCRIBED "1/4 S25 CS BT"
BEARS S77 1/2° E, 55° FT.

17" W. OAK DOUBLE BLAZED AND SCRIBED "1/4 S25 CS BT"
BEARS N21° E, 27 1/2° FT.

40" W. OAK DOUBLE BLAZED AND SCRIBED "1/4 S26 CS BT"
BEARS S73° W, 119 1/2° FT.

Sketch of Monument, Accessories, and General Area



Location & Comments

CORNER LIES ON A
NW SLOPE. DIRT ROAD
APPROX. 125 FT FROM
CORNER.

Comp. Declin. 18 1/2° E
Agency DC SO
Party Chief RANDALL W. SMITH
Notekeeper Randall W. Smith
Witnesses STEPHEN J. FLAUSE

Surveyor's Seal

REGISTERED
PROFESSIONAL
LAND SURVEYOR

Larry E. Monrean

OREGON
JULY 13, 1979
LARRY E. MONREAN
#1830