

GOVERNMENT CORNER RESTORATION FORM

Township 28S Range 6W Sec. 25 County DOUGLAS

State OR Date 1/23/86 No. _____

Corner Designation

1/4 S26 | S25

- Condition Report Only
- Not Found
- Renewed
- Unrecorded
- Surveyed In
- Referenced Out

Previous Renewals #7, #54, M68-16

Monument(s) Found: (Condition and Source)

NONE FOUND

MONUMENT DETAIL

N/A

Accessories Found:

NO ORIG. OR BT'S PER REN #7 FOUND

NE BT PER REN #54 GONE

20" NOW 27" DIA. FORKED W. OAK WITH A FULLY HEALED SINGLE BLAZE THAT WE OPENED AND FOUND SCRIBING "B" BEARS N69°W, 301.0 FT (REC. N67°00'00"W, 301.0 FT. IS AN APPARENT GRID BRG). PER REN #54.

3/4" I.R. PROTRUDING 5" W. ABOVE GROUND BEARS NORTH, 538.97 FT (REC. N8°14'43"E, 538.97 FT IS AN APPARENT GRID BRG) PER M68-16.

#172 ✓

C.S. File No. 62/31-15

RENEWAL

Monument Set (Procedure and Description)

A 1 1/4" DIA. BY 3 1/2" LONG I.P. WITH A DCSO BRASS CAP SET 22 IN. IN THE GROUND. WITH A 2 FT DIA. 10" TALL MOUND OF STONE AROUND I.P.

COR. POSITION PERPETUATED USING ONE BT PER REN#54 AND A 3/4" I.R. PER M68-16.

Monument Detail

DOUGLAS CO. SURVEYORS OFFICE
 T285
 1/4
 526 | 525
 RGW
 1986

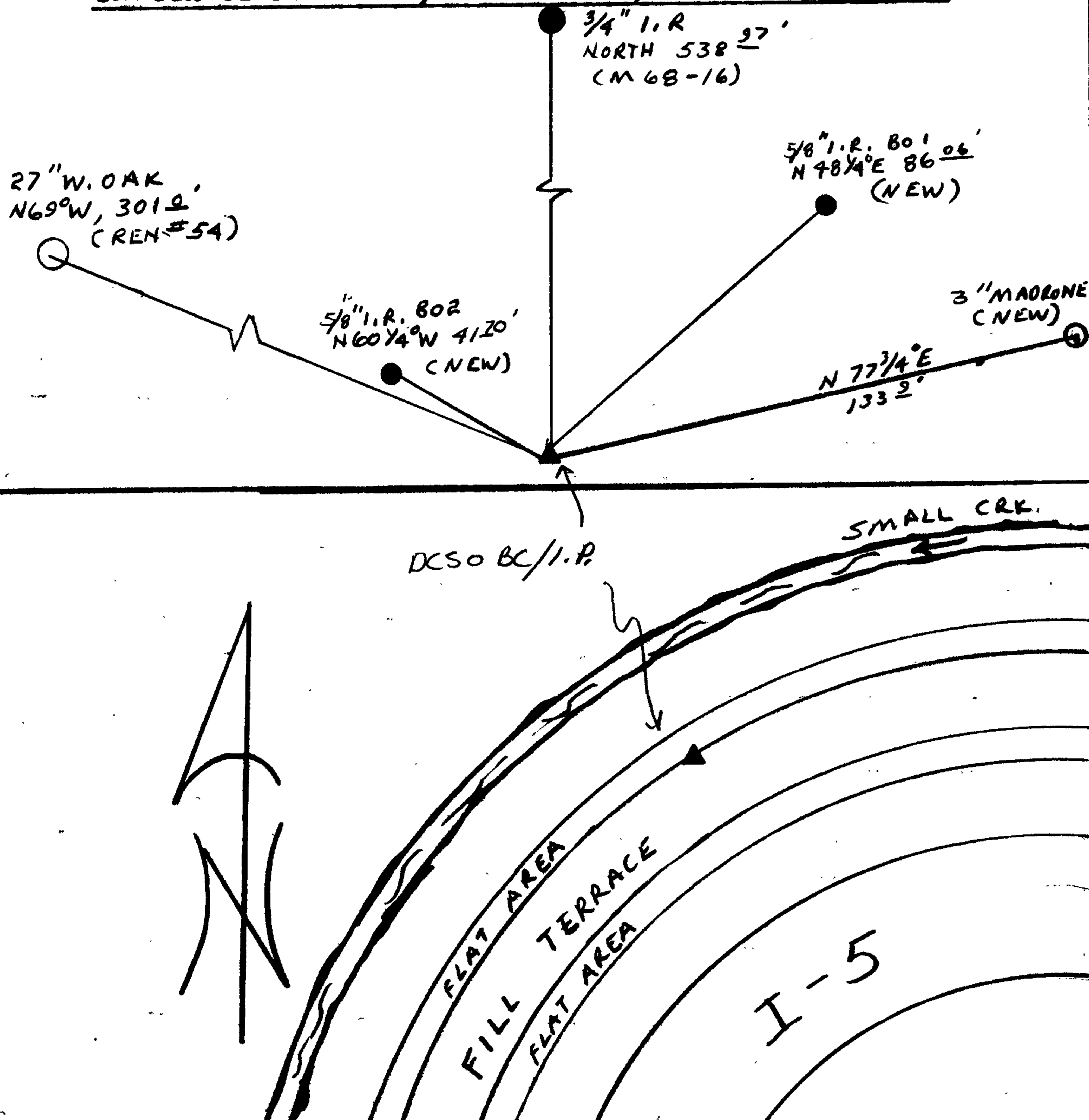
New Accessories

5/8" I.R. WITH ALUMINUM DCSO CAP STAMPED "B01 1986"
 BEARS N 48 1/4° E, 86.06 FT.

5/8" I.R. WITH ALUMINUM DCSO CAP STAMPED "B02 1986"
 BEARS N 60 1/4° W, 41.70 FT.

3" DIA. MADRONE DOUBLE BLAZED AND SCRIBED "X BT" BEARS N 77 3/4° E, 133.9 FT.

Sketch of Monument, Accessories, and General Area



Location & Comments

CORNER LIES IN LEDGE DITCH OF FILL TERRACE ON NORTH SIDE OF I-5 APPROX. 1/2 MILE SOUTHWEST OF THE SUMMIT TO ROBERTS MOUNTAIN.

Comp. Declin. 18 1/2° E
 Agency DCSO
 Party Chief RANDALL W SMITH
 Notekeeper Randall W Smith
 Witnesses STEPHEN J. FLAUSE

Surveyor's Seal

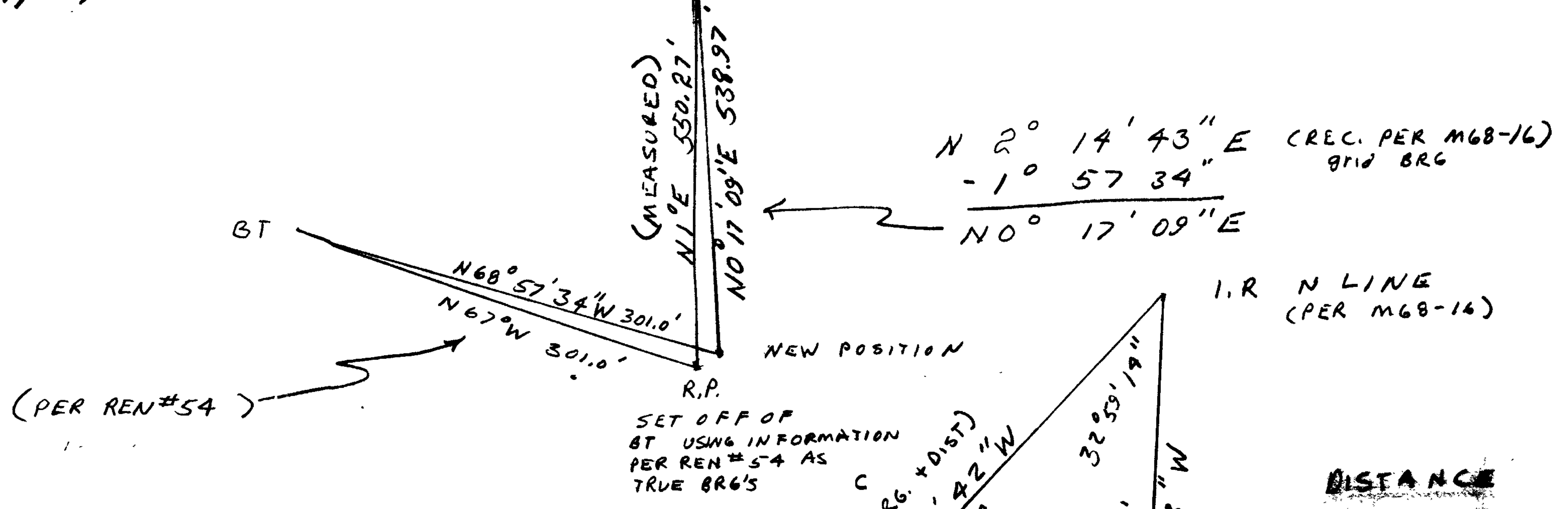
PROFESSIONAL
 LAND SURVEYOR

Larry E. Moore

OREGON
 JULY 13, 1979
 LARRY E. MOORE
 #1230

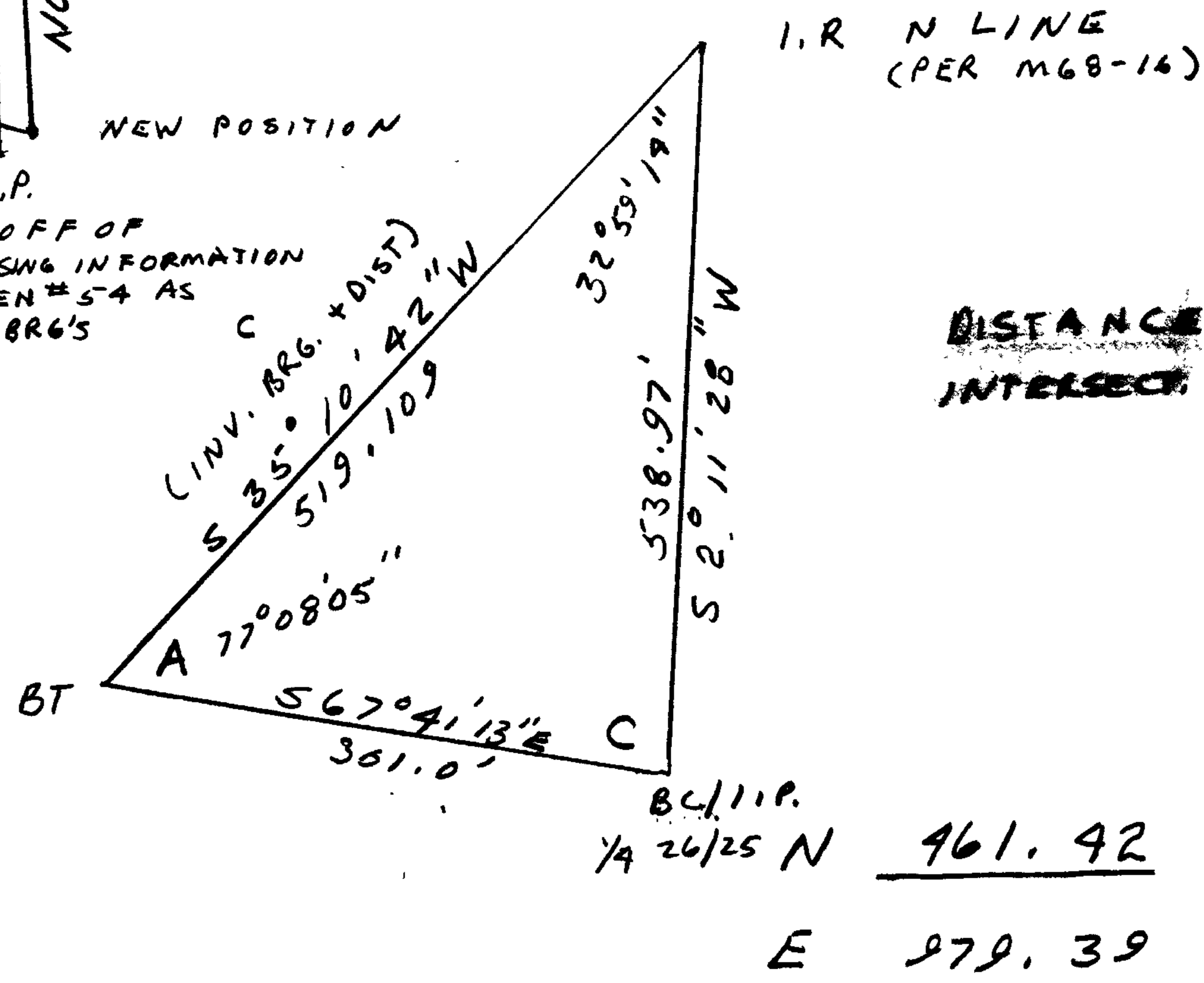
AWJ
1/23/86

LONG 123° 21' 50"
θ -1° 57' 34"



$$\cos A = \frac{301.0^2 + 519.104^2 - 538.97^2}{2(301.0 \times 519.104)} = 77^\circ 08' 05''$$

$$\cos B = \frac{538.97^2 + 519.104^2 - 301.0^2}{2(538.97 \times 519.104)} = 32^\circ 59' 14''$$



BC/I.P.
1/4 26/25 N 461.42
E 979.39

DISTANCE INTERSECT.

3/4" I.R.

S X 81° 59' 20" X W (REC PER M68-16)

3/4" I.R. N LINE 280° 39' 35" RT

~~N 2° 38' 55" NE~~ 550.27

R.P. 291° 58' 11" RT

~~N 65° 22' 54" W~~ 301.0

BT

3/4" I.R. N LINE

~~N 2° 38' 55" NE~~

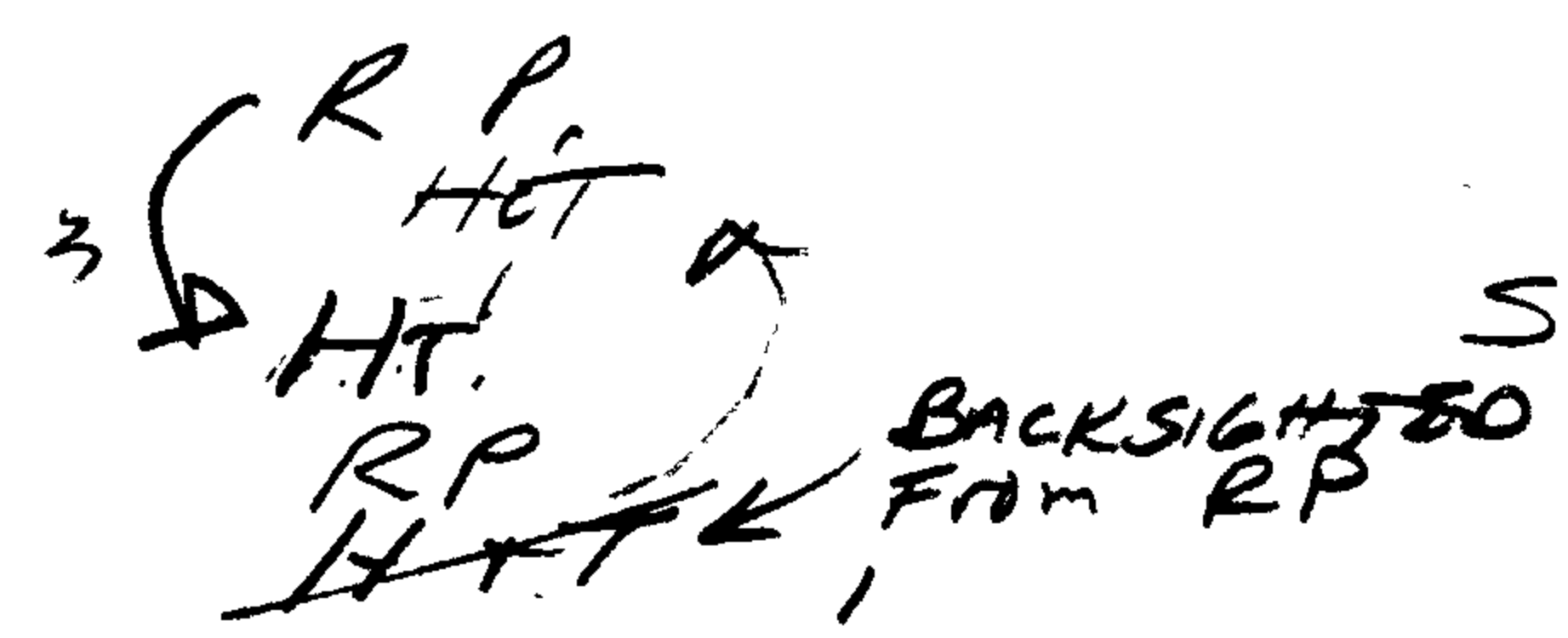
62° 19' 01" RT

S X 64° 57' 56" X W

318° 30' 23" RT

~~N 23° 28' 12" E~~ 12.10 FROM R.P.

| | | | |
|--------------|------------------------|---|---------------|
| RP N | 450.32 | E | 974.57 |
| BC/I.P. N | <u>461.42</u> | E | <u>979.39</u> |
| Δ | 11.10 | Δ | 4.82 |
| RP → BC/I.P. | N 23° 28' 19" E 12.10' | | |



BC/I.P.
1/4 26/25

C.S. File No. 62/31-15