

GOVERNMENT CORNER RESTORATION FORM

Township 28S Range 6W Sec. 19 County DOUGLAS

State OREGON Date JAN 7, 1986 No. _____

Corner Designation

519	520
530	529

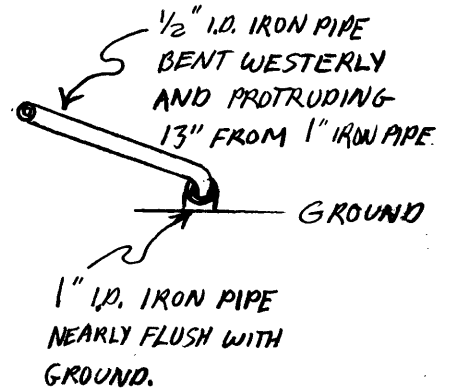
- Condition Report Only
- Not Found
- Renewed
- Unrecorded
- Surveyed In
- Referenced Out

Previous Renewals #22

MONUMENT DETAIL

Monument(s) Found: (Condition and Source)

A 1 INCH I.D. IRON PIPE FIRMLY SET FLUSH WITH GROUND (RECORD 3/4" IRON PIPE, FROM RENEWAL #22) PROTRUDING FROM ABOVE IRON PIPE APPROX. 13 INCHES IS A 1/2 INCH I.D. IRON PIPE BENT WESTERLY AND NEARLY TOUCHING GROUND. (AN UNRECORDED MONUMENT)



Accessories Found:

AN ORIGINAL 16" NOW A 29 INCH D.B.H. WHITE OAK OPENED TO REVEAL DEFINITE BUT ILLEGIBLE PARTIAL SCRAMBLING BEARS N 33 1/2° W, 78 3 FEET DISTANT (RECORD N 33 1/2° W 77 2 FT DIST. POSSIBLE FACE MEASURE AND OR SLOPE REDUCTION ERROR).

AN ORIGINAL 18 INS Y. OAK NOW A FALLEN, BROKEN AND KOTTED OAK WITH NO MARKINGS FOUND HAS A STUMPHOLE BEARING APPROX. S 27° E, 15 8 FT. DISTANT (AS PER RECORD).

NO EVIDENCE OF OTHER ORIGINAL BEARING TREES FOUND.

FROM RENEWAL #22 TWO BEARING TREES FOUND. A WHITE OAK 10" DIAM. NOW A 19 INCH D.B.H. WHITE OAK WITH A FULLY HEALED BLAZE BEARS S 40 3/4° W, 134 2 FEET DISTANT (AS PER RECORD)

AND A WHITE OAK 10" DIAM. NOW A 22 INCH D.B.H. WHITE OAK WITH A FULLY HEALED BLAZE BEARS N 41° E, 29 2 FEET DISTANT (RECORD N 41° E, 29 1 FT. THIS IS A FACE MEASUREMENT)

RENEWAL

Monument Set (Procedure and Description)

MONUMENT FOUND IS ACCEPTED BECAUSE IT APPEARS FIRMLY SET, UNDISTURBED AND ITS POSITION AGREES WITH MOST OF EVIDENCE REMAINING FROM RENEWAL #22 (WHICH REESTABLISHED CORNER LOCATION FROM TWO ORIGINAL BEARING TREES)

LOCATION OF MONUMENT FOUND IS REFERENCED OUT. MONUMENT IS REMOVED AND IN ITS POSITION IS PLACED A 2 1/2 INCH BRASS CAP ON A 1 3/8 X 32 INCH IRON PIPE MARKED AS AT RIGHT, FIRMLY SET AND PROTRUDING 3 INCHES FROM GROUND. 1/2" IRON PIPE OF FOUND MONUMENT IS DRIVEN INSIDE 1" IRON PIPE AND THESE ARE BURIED JUST BELOW GROUND SURFACE AT WEST EDGE OF BRASS CAP MONUMENT.

Monument Detail

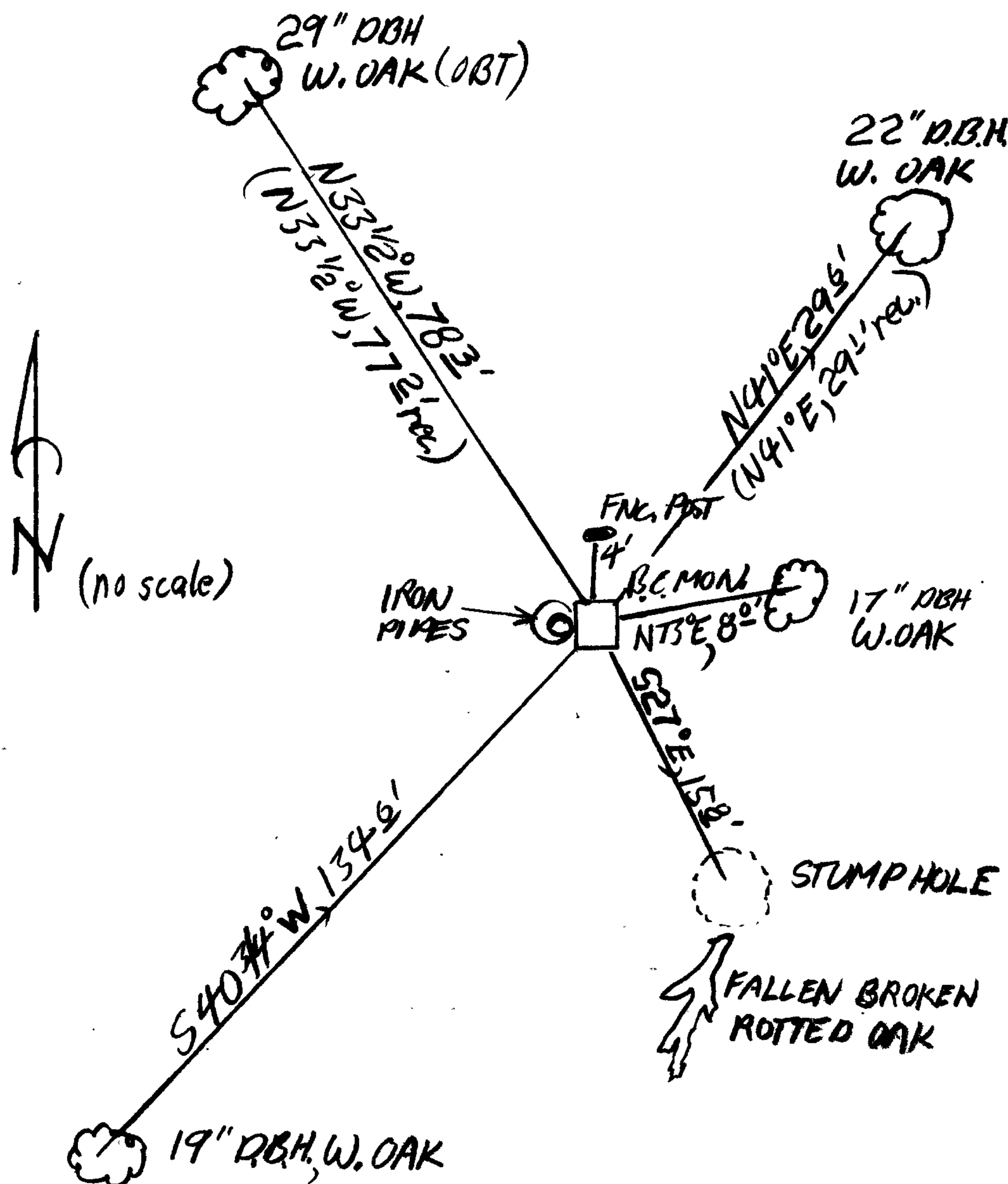
DOUGLAS COUNTY SURVEYORS
T 28 S
S19 | S20
S30 | S29
R 6 W
1986

New Accessories

A 17 INCH D.B.H. WHITE OAK SCRIBED T28S R6W S20 CS BT ON A DOUBLE BLAZE, BEARS N 73° E, 8° FEET DISTANT.

AN IRON FENCE POST PAINTED RED AND WHITE SET PROTRUDING 4 FEET FROM GROUND LIES APPROXIMATELY 3 FEET NORTH OF CORNER MONUMENT.

Sketch of Monument, Accessories, and General Area



Location & Comments

MONUMENT LIES NEAR SUMMIT OF KNOLL APPROXIMATELY 300 FT. NORTH OF HIGHWAY 42 AND 500 FT. NORTHWEST OF BROCKWAY STORE

Comp. Declin. 18 1/2° E
Agency DCSO
Party Chief Stephen John House
Notekeeper S.J. FLAISE
Witnesses R.W. SMITH

Surveyor's Seal

REGISTERED
PROFESSIONAL
LAND SURVEYOR

Larry E. Monrean

OREGON
JULY 13, 1979
LARRY E. MONREAN
#1830