

fl. 26 fl. 5 GOVERNMENT CORNER RESTORATION FORM
 Township 255 Range 6W Sec. 26 County DOUGLAS
 State OR Date 2/28/86 No. _____

Corner Designation

$\frac{1}{4}$ $\frac{S26}{S35}$

- _____ Condition Report Only
- _____ Not Found
- Renewed
- _____ Unrecorded
- _____ Surveyed In
- _____ Referenced Out

Previous Renewals VOL 2 Pg 87, VOL 4 Pg 5, #19^{SUBD} #111

Monument(s) Found: (Condition and Source)
1/2" INSIDE DIA I.P. (PER REN #19 REC 3/4" I.P.)
PROTRUDING 4 IN. ABOVE GROUND, 1/2" I.P.
LEANS 2 1/2 IN. NORTH OF PLUMB. CORNER
STONE (PER VOL 4 Pg 5) MEASURES 8" X 6" X 14"
(REC. 8" X 8" X 14") BURIED 4 IN. BENEATH
GROUND, MARKED " + I.P." ON TOP. PLUMB
POSITION OF I.P. IS 4 1/2 IN. SOUTH OF
" + " ON CORNER STONE.

N/A

MONUMENT DETAIL

Accessories Found:

NO ORIG. BT'S FOUND

18" NOW 15" DIA. W. OAK WITH A SINGLE FULLY HEALED BLAZE
BEARS N54°E, 17.0 FT (AGREES WELL WITH REC.), PER VOL 4 Pg 5

10" NOW 9" DIA 4 FT. HIGH DOUBLE TRUNKED W. OAK STUMP
WITH SCRIBE VISIBLE IN SINGLE PARTIAL HEALED BLAZE " 1/4"
BEARS S31°E, 37.9 FT (AGREES WELL WITH REC.) PER VOL 4 Pg 5

9" NOW 11" DIA W. OAK WITH A SINGLE FULLY HEALED BLAZE
BEARS S11°E, 33.5 FT (AGREES WELL WITH REC.) PER REN #111

FENCE POST BEARS N89°33'W, 74.56 FT (AGREES WELL WITH REC.)
PER M 69-69

#1544

C.S. File No. 62/31-13

RENEWAL

Monument Set (Procedure and Description)

SET DCSO 2 3/4" BC ON A 1 1/4" O.D. X 32" LONG
I.P. THAT PROTRUDES 4" ABOVE GROUND. 1/2"
I.P. SET ALONG NORTH EDGE OF BC/I.P.
PROTRUDING 3" ABOVE GROUND. CORNER STONE
SET ON SOUTH EDGE OF BC/I.P. 2" BELOW
GROUND.

CAP IS SET AT POSITION PREVIOUSLY MARK BY
CROSS ON ROCK FROM VOL 4 PAGE 5.

Monument Detail

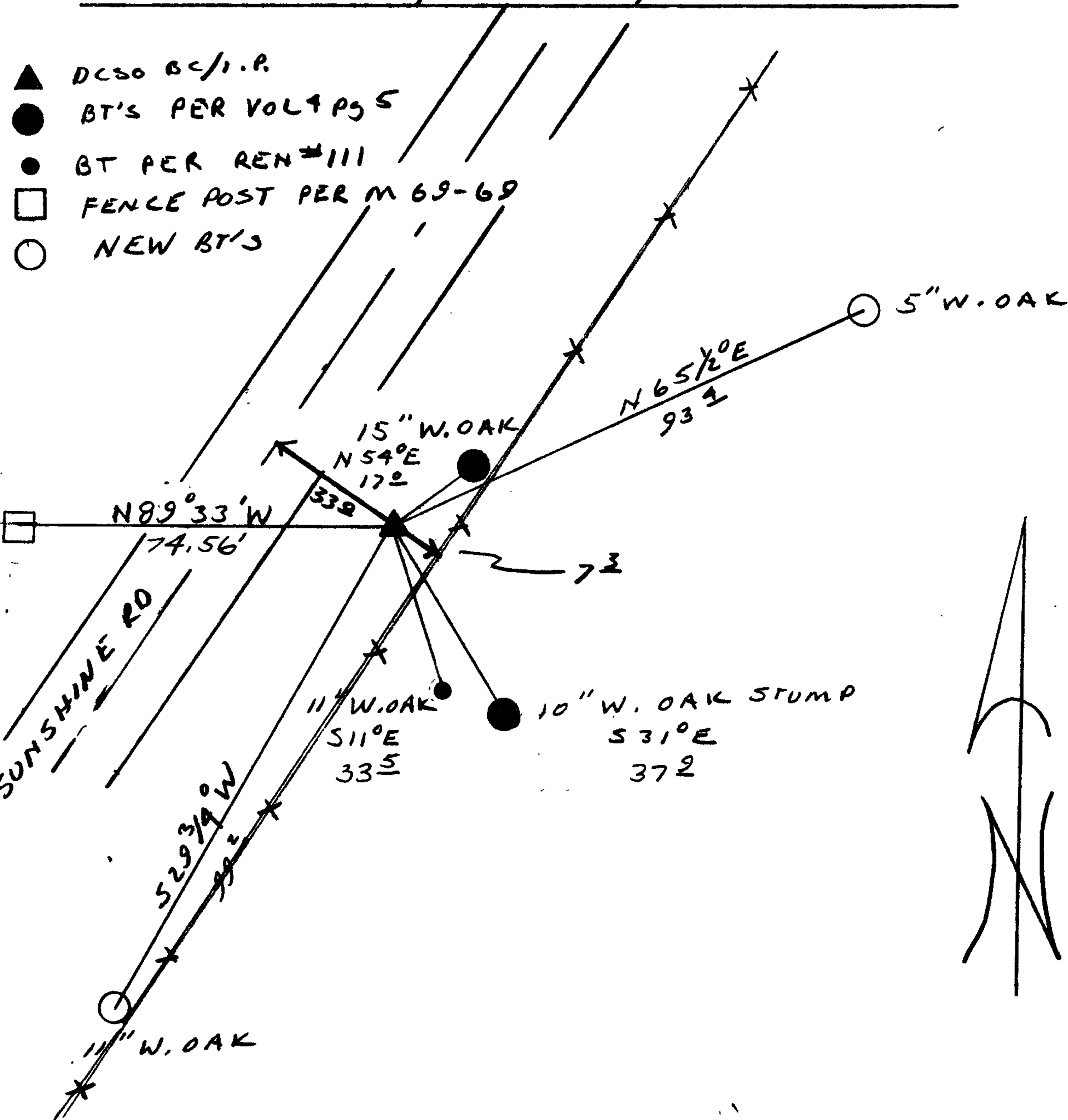
DOUGLAS COUNTY SURVEYORS
T 26 S
R 5 W
S 35
1986

New Accessories

5" W. OAK DOUBLE BLAZED " 1/4 S 26 CS BT "
BEARS N 65 1/2° E, 93.4 FT.

11" W. OAK DOUBLE BLAZED " 1/4 S 35 CS BT "
BEARS S 29 3/4° W, 99.2 FT.

Sketch of Monument, Accessories, and General Area



Location & Comments

CORNER LIES ON 6 FT
HIGH CUT BANK 33 FT
EAST OF CENTER LINE
TO SUNSHINE RD.

Comp. Declin. 18 1/2° E
Agency DCSO
Party Chief RANDALL W. SMITH
Notekeeper Randall W. Smith
Witnesses STEPHEN J. FLAUSE

Address

Surveyor's Seal
REGISTERED
PROFESSIONAL
LAND SURVEYOR.

Larry E. Monrean

OREGON
JULY 13, 1979
LARRY E. MONREAN
#1830