

GOVERNMENT CORNER RESTORATION FORM

Township 26 S Range 5 W Sec. 14 County DOUGLAS

State OREGON Date FEB 20, 1986 No. \_\_\_\_\_

Corner Designation

$\frac{1}{4}$   $\frac{S 14}{523}$

- \_\_\_\_\_ Condition Report Only
- \_\_\_\_\_ Not Found
- Renewed
- \_\_\_\_\_ Unrecorded
- \_\_\_\_\_ Surveyed In
- \_\_\_\_\_ Referenced Out

Previous Renewals #39

Monument(s) Found: (Condition and Source)

A 2 3/4 INCH BRASS CAP MARKED AS AT RIGHT ON A 1 1/4 INCH O.D. IRON PIPE FIRMLY SET AND PROTRUDING APPROX. 6 INCHES ABOVE GROUND. A LOW, LOOSE MOUND OF STONE APPROX. 2 FEET IN DIAM. SURROUNDS BASE OF B.C. MONUMENT.

COUNTY SURVEYORS OFFICE

T26S R5W

1/4 S

14

23

1954

Accessories Found: \* LOCAL ATTRACTION REQUIRES SETTING DECLINATION  $1\frac{3}{4}$  FURTHER EAST

ONE ORIGINAL BEARING TREE FOUND. A W. OAK 20 INCH DIAM. NOW A 26 INCH D.B.H. WHITE OAK (CALLED A 28 INCH TREE IN RENEWAL #39) HAS AN OPENED PARTIALLY REHEALED SINGLE BLAZE WITH THE SCRIBING "1/4 S" VISIBLE AND BEARS S 79° W, 309 1/2 FEET (AS PER RECORD)

FROM RENEWAL #39 A 15 INCH W. O. NOW A 20 INCH D.B.H. WHITE OAK WITH A HEALED DOUBLE BLAZE (ONE BLAZE PREVIOUSLY OPENED, NO SCRIBING VISIBLE) BEARS S 84° W, 382 2/3 FEET DIST. (RECORD S 84° 12' W, 383 5/8 FEET). AND A 7 INCH B.O. NOW A 12 INCH D.B.H. WHITE OAK WITH A FULLY HEALED DOUBLE BLAZE BEARS N 30° W, 179 1/2 FEET DIST. (RECORD N 30° W 180 1/2 POSSIBLY DIST. TO CENTER OF TRUNK AT BLAZE HEIGHT.

#153 ✓

RENEWAL

Monument Set (Procedure and Description)

Monument Detail

(none)

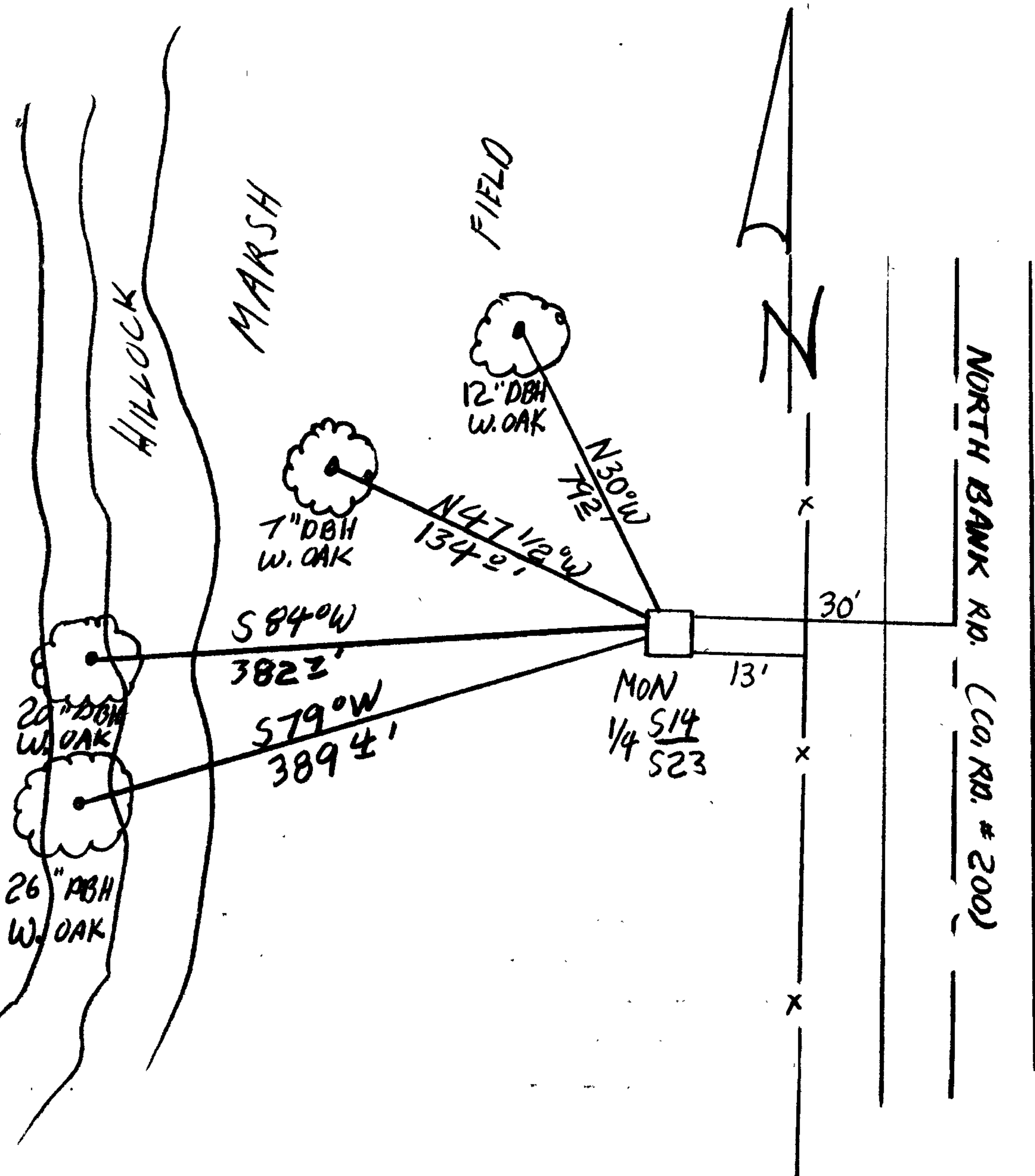
(not app.)

New Accessories

A 7 INCH K.B.H. WHITE OAK SCRIBED 1/4 S14 CS BT ON A DOUBLE BLAZE BEAKS N47 1/2° W, 134° FT. DIST.

Sketch of Monument, Accessories, and General Area

Location & Comments



LOCAL ATTRACTION REQUIRES SETTING COMPASS DECLINATION 13/4° FURTHER EAST FROM THE AVERAGE DECLINATION OF THE AREA.

Comp. Declin. 20 1/4° E  
Agency DC SO  
Party Chief S. J. FLAUSE  
Notekeeper Stephen John Flause  
Witnesses R. W. SMITH

Address

Surveyor's Seal

REGISTERED PROFESSIONAL LAND SURVEYOR

Larry E. Monrean

OREGON  
JULY 13, 1979  
LARRY E. MONREAN  
#1830